

Colorado City Unified School District

Mohave County
Operational peer group: F
Legislative districts: 3

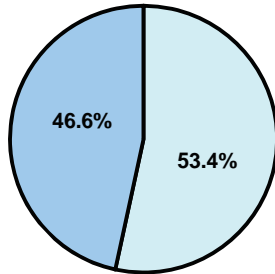
District size: Small
Students attending: 410
Number of schools: 1

OPERATIONAL EFFICIENCY

Average per-pupil spending

District
State

Classroom
\$4,867
\$4,497



Nonclassroom
\$5,574
\$3,411

Total
\$10,441
\$7,908

5-year trend

The District closed 2 schools, which contributed to the 14 percent decrease in total spending per pupil. Spending in the classroom was very inconsistent year to year and increased slightly overall from 46.2 to 46.6 percent. Spending on transportation and instruction support increased significantly, while spending in other nonclassroom areas decreased significantly.

District's cost measures relative to peer group

Operational Area	Measure	District	Peer Average	State Average
Administration	Cost per pupil	\$1,118	\$1,524	\$729
	Students per administrator	36	42	66
Plant Operations	Cost per square foot	\$6.77	\$5.78	\$6.40
	Square footage per student	182	284	144
Food Service	Cost per meal equivalent	\$2.99	\$3.38	\$2.53
Transportation	Cost per mile	\$4.53	\$2.60	\$3.36
	Miles per rider	153	294	271

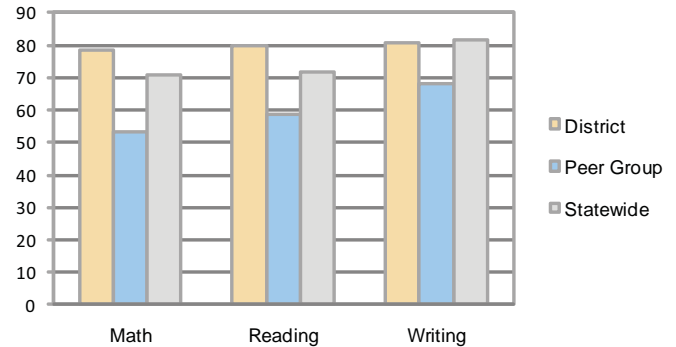
Very Low Low Comparable High Very High

Per-pupil spending by function

	District 2008	District 2009	Peer 2009	State 2009	National 2007
Total	\$9,639	\$10,441	\$10,596	\$7,908	\$9,683
Classroom dollars	\$4,348	\$4,867	\$5,393	\$4,497	\$5,903
Nonclassroom dollars:	\$5,291	\$5,574	\$5,203	\$3,411	\$3,780
Administration	1,230	1,118	1,524	729	1,050
Plant Operations	875	1,232	1,549	920	951
Food Service	309	316	496	382	369
Transportation	461	564	552	343	406
Student Support	432	435	593	594	512
Instruction Support	1,984	1,909	481	431	470
Other	0	0	8	12	22

STUDENT ACHIEVEMENT AND TEACHER INFORMATION

Percentage of students meeting state standards (AIMS)



Adequate Yearly Progress (AYP) toward federal goals

The District's school did not meet all AYP objectives for NCLB because its graduation rate was not sufficient.

Student and teacher information

Measure	District	Peer average	State average
Attendance rate	95%	94%	95%
Graduation rate (2008)	43%	73%	75%
Poverty rate	42%	30%	19%
Student/teacher ratio	17.8	14.2	17.1
Average teacher salary	\$41,641	\$41,521	\$45,209
Average years' experience	12.9	10.8	8.3
Percent of teachers in first 3 years	5%	23%	16%

Proposition 301

Teacher pay

On average, each teacher earned \$4,410 in additional salary.

Performance pay plan goals and results

Type of goal	Goal met?
Student achievement	■
Dropout/ graduation rates	■
Student attendance	■
Parent/student satisfaction	■
Teacher attendance	■
Teacher professional development	■
Teacher evaluations	■
Tutoring	■
Other	□

■ = yes, □ = no, and ▮ = partially