

Classroom Dollars and Proposition 301 Results

Congress Elementary School District

Yavapai County

District size: Very Small
 Students attending: 118
 Number of schools: 1
 Number of certified teachers: 11

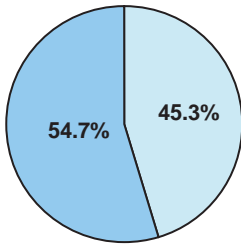
Classroom Dollars

Fiscal year 2006 averages per pupil

District

State

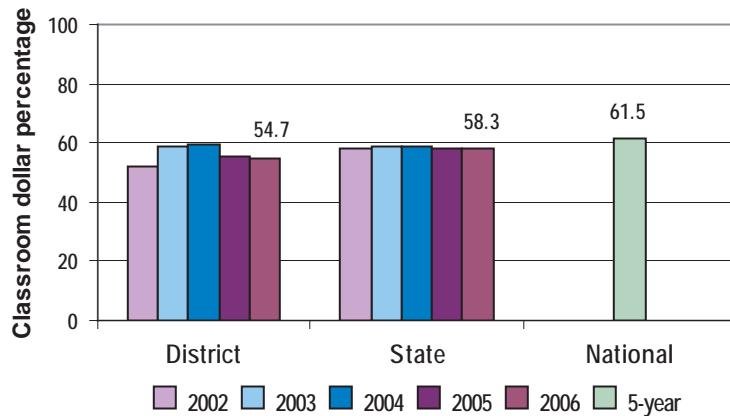
Classroom
\$5,024
\$3,981



Nonclassroom
\$4,163
\$2,852

Total
\$9,187
\$6,833

5-year comparison



Expenditures by function

	District					State 2006	National 5-year
	2002	2003	2004	2005	2006		
Classroom dollars	51.7	58.9	59.3	55.6	54.7	58.3	61.5
Nonclassroom dollars:							
Administration	17.3	14.2	14.7	16.1	16.7	9.4	11.0
Plant operations	13.1	9.0	11.2	10.7	10.8	11.2	9.6
Food service	5.4	5.4	5.4	6.0	5.4	4.7	3.9
Transportation	5.2	4.3	4.4	4.7	5.1	4.2	4.0
Student support	1.6	1.7	2.0	1.8	2.3	7.2	5.1
Instruction support	5.7	6.5	3.0	5.1	5.0	4.8	4.7
Other						0.2	0.2

Comparative Information

	District			State
	2004	2005	2006	2006
Student/teacher ratio	10.9	13.2	10.8	17.7
Average teacher salary	\$40,827	\$40,255	\$39,977	\$42,967
Average years' experience	8.3	8.0	7.4	8.3

Classroom dollar ranking: 125 of 229 districts.

Proposition 301

District-reported 2006 results

Teacher pay

- On average, each teacher earned an additional \$3,176 in salary, and the speech pathologist earned an additional \$904.

Performance

- The District accomplished its goals, which were similar to the prior fiscal year's goals and were based on school performance.
- At least 80 percent of students demonstrated 1 year's growth or scored "meets" or "exceeds" in all categories of standardized tests.
- The student attendance rate was at least 94 percent.

Menu

- Monies were used primarily to pay for teachers' medical, dental, and vision insurance premiums.
- 12 teachers were compensated for attending professional development trainings in math, reading, and technology.