

Classroom Dollars and Proposition 301 Results

Congress Elementary School District

Yavapai County

District size: Very Small
 Students attending: 116
 Number of schools: 1
 Number of certified teachers: 10

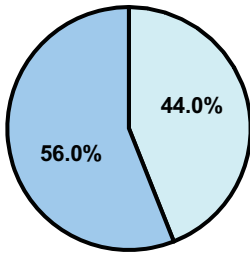
Classroom Dollars

Fiscal year 2007 averages per pupil

District

State

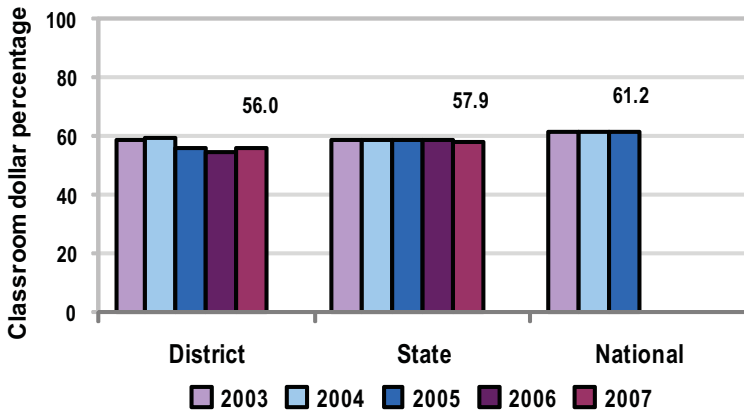
Classroom
\$5,831
\$4,277



Nonclassroom
\$4,573
\$3,105

Total
\$10,404
\$7,382

5-year comparison



Expenditures by function

	Percentage					State 2007	National 2005
	2003	2004	2005	2006	2007		
Classroom dollars	58.9	59.3	55.6	54.7	56.0	57.9	61.2
Nonclassroom dollars:							
Administration	14.2	14.7	16.1	16.7	15.4	9.5	11.0
Plant operations	9.0	11.2	10.7	10.8	11.3	11.3	9.6
Food service	5.4	5.4	6.0	5.4	5.4	4.7	3.9
Transportation	4.3	4.4	4.7	5.1	4.6	4.3	4.1
Student support	1.7	2.0	1.8	2.3	2.0	7.3	5.2
Instruction support	6.5	3.0	5.1	5.0	5.3	4.8	4.8
Other						0.2	0.2

Comparative Information

	District			State
	2005	2006	2007	2007
Student/teacher ratio	13.2	10.8	11.6	17.4
Average teacher salary	\$40,255	\$39,977	\$41,059	\$43,833
Average years' experience	8.0	7.4	9.5	8.1

Classroom dollar ranking: 96 of 229 districts.

Proposition 301

District-reported 2007 results

Teacher pay

- On average, each teacher and the speech pathologist earned an additional \$3,897.

Performance

- The District accomplished its goals, which were based on district and individual performance.
- At least 80 percent of students demonstrated 1 year's growth or scored "meets" or "exceeds" on standardized tests.
- The student attendance rate was at least 94 percent.
- Teachers received satisfactory performance evaluations.

Menu

- Monies were used primarily to pay for teachers' medical, dental, and vision insurance premiums.
- 8 teachers were compensated for attending professional development classes.