

# Congress Elementary School District

Yavapai County

Efficiency peer groups 11 and T-11, Achievement peer group 19

Legislative district(s): 1

District size, location:

Very small, Rural

Students attending:

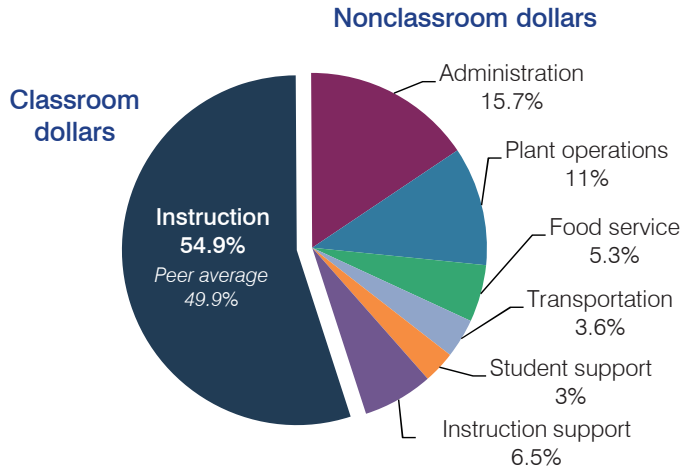
106

Number of schools:

1

## OPERATIONAL EFFICIENCY

### Spending by operational area



### Efficiency measures relative to peer averages

Operational area	Measure	District	Peer average	State average
Administration	Cost per pupil	\$2,162	\$3,013	\$780
	Students per administrative position	47	29	67
Plant operations	Cost per square foot	\$6.17	\$6.80	\$6.09
	Square footage per student	246	370	153
Food service	Cost per meal equivalent	\$4.17	\$5.66	\$2.79
	Cost per mile	\$1.10	\$1.55	\$3.66
Transportation	Cost per rider	\$1,126	\$1,620	\$1,071

### Per pupil spending

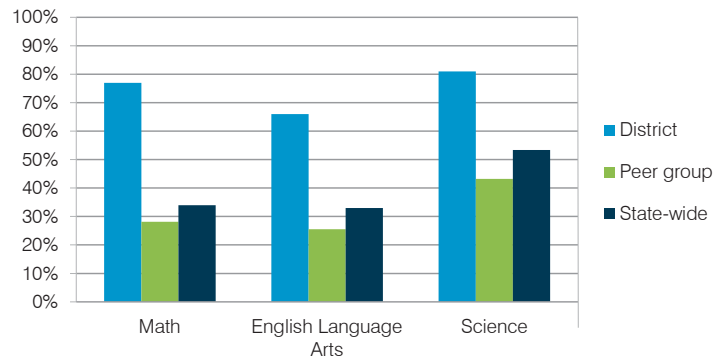
Spending by area	District		Peer average	State average
	2014	2015	2015	2015
Instruction	\$ 7,307	\$ 7,559	\$ 8,258	\$ 4,105
Administration	1,886	2,162	3,013	780
Plant operations	1,470	1,519	2,390	930
Food service	707	736	967	417
Transportation	559	501	1,127	371
Student support	427	414	664	613
Instruction support	823	890	572	442
<b>Total operational</b>	<b>\$ 13,179</b>	<b>\$ 13,781</b>	<b>\$ 16,991</b>	<b>\$ 7,658</b>
Land and buildings	\$ 256	\$ 380	\$ 961	\$ 641
Equipment	220	288	582	383
Interest	0	0	40	225
Other	0	0	90	150
<b>Total nonoperational</b>	<b>\$ 476</b>	<b>\$ 668</b>	<b>\$ 1,673</b>	<b>\$ 1,399</b>
<b>Total per pupil spending</b>	<b>\$ 13,655</b>	<b>\$ 14,449</b>	<b>\$ 18,664</b>	<b>\$ 9,057</b>

## STUDENT AND TEACHER MEASURES, FINANCIAL ASSESSMENT, AND REVENUE

### Student and teacher measures

Measure	District	Peer average	State average
Attendance rate	96%	94%	94%
Graduation rate (2014)	N/A	N/A	N/A
Poverty rate (2014)	29%	31%	23%
Students per teacher	8.8	12.9	18.6
Average teacher salary	\$45,742	\$43,855	\$46,008
Average years of teacher experience	15.6	12.6	11.0
Percentage of teachers in first 3 years	0%	9%	20%

### Students who met state standards



### Financial stress assessment

Overall financial stress level: **Low**

Measure: 2013 through 2015

Assessment

Change in number of district students	Small school adjustment
Spending exceeded operating/capital budgets	No overspending
Spending increase election results	No election held
Operating reserve percentage (max. 4%), trend	4.0%, Steady
Years of capital reserve held	More than 3 years
Current financial and internal control status	Compliant

Low Moderate High

### Per pupil revenues

Revenues by source	District		Peer average	State average
	2014	2015	2015	2015
Federal	\$ 1,424	\$ 1,612	\$ 2,858	\$ 1,299
State	3,502	3,877	4,521	3,517
Local	9,252	9,490	13,591	4,248
<b>Total revenues per pupil</b>	<b>\$14,178</b>	<b>\$14,979</b>	<b>\$20,970</b>	<b>\$ 9,064</b>
<b>Select revenues from common sources</b>				
Equalization formula funding	\$ 6,858	\$ 7,813	\$ 9,139	\$ 5,303
Grants	1,428	1,616	3,089	1,167
Donations and tax credits	207	341	159	78
<b>Select revenues from less common sources</b>				
<b>Number of peers receiving</b>				
Desegregation	\$ 0	\$ 0	0 of 53	
Small school adjustment	5,508	6,018	41 of 53	
Federal impact aid	0	0	3 of 53	
Voter-approved levy increases	0	0	7 of 53	

# Congress ESD—page 2

## Classroom dollar percentage

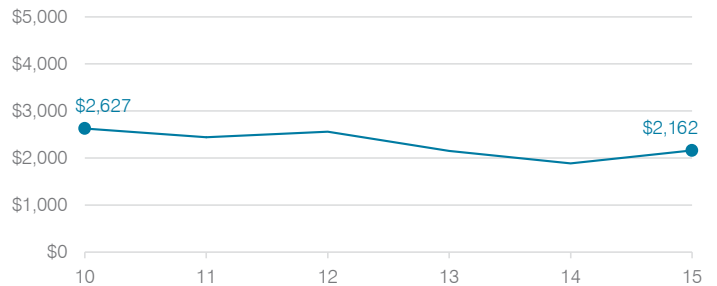
Year:	2001	2002	2003	2004	2005	2006	2007	2008	2009	2010	2011	2012	2013	2014	2015
Percentage:	N/A	51.7	58.9	59.3	55.6	54.7	56.0	52.6	53.5	51.7	50.1	49.6	54.4	55.4	54.9

### OPERATIONAL TRENDS Fiscal years as indicated

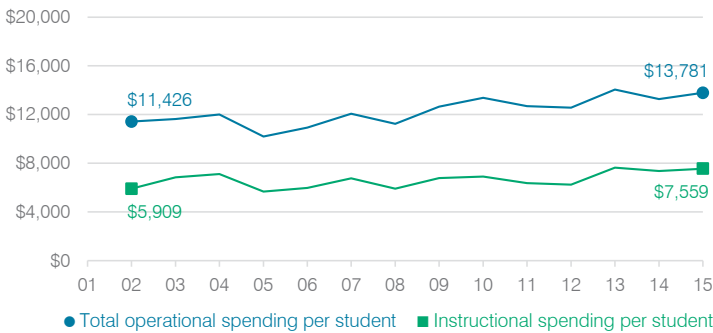
#### 5-year spending trend (2010 through 2015)

Total operational spending per pupil, adjusted for inflation, increased by 3 percent. The percentage of dollars spent in the classroom varied year to year, increasing overall from 51.7 to 54.9 percent. As a percentage of total operational spending, most nonclassroom areas varied year to year, as is common for very small districts. Overall, administration decreased substantially, while instruction support increased.

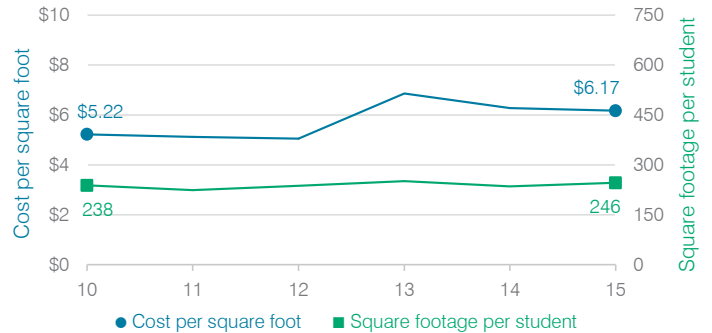
#### Administrative cost per student



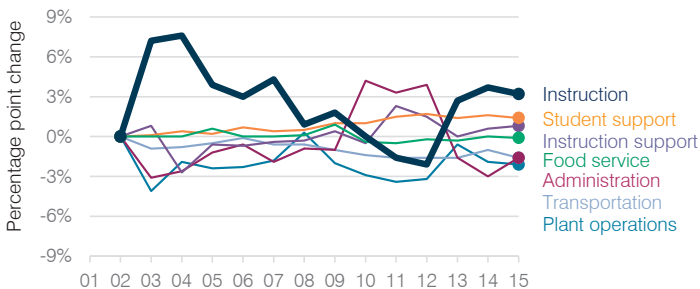
#### Total operational and instructional spending per student (inflation adjusted to 2015 dollars)



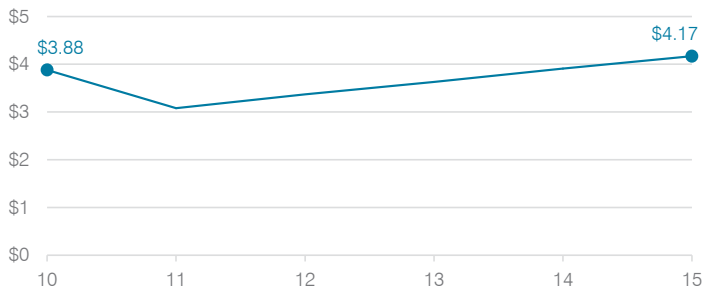
#### Plant cost per square foot and square footage per student



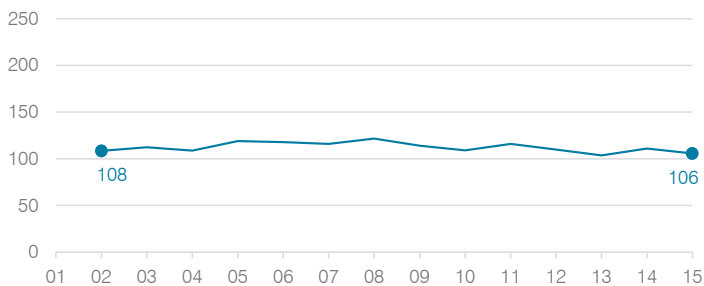
#### Changes in operational spending percentages



#### Food service cost per meal



#### Students attending



#### Transportation costs per mile and per rider

