

Continental Elementary School District

Pima County

Efficiency peer groups 10 and T-6, Achievement peer group 17

Legislative district(s): 2 and 14

District size, location:

Small, Rural

Students attending:

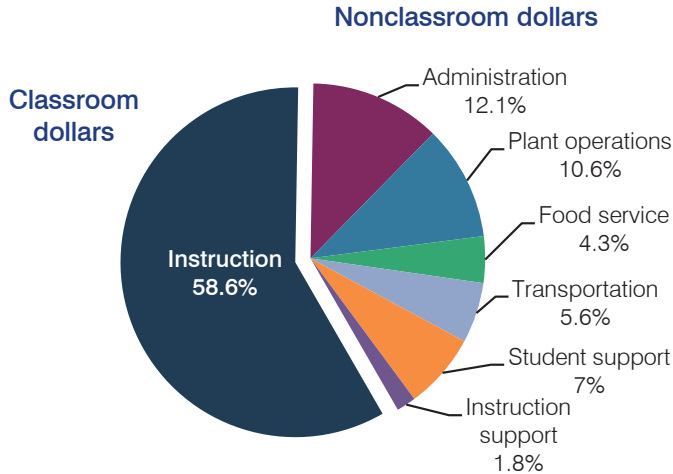
485

Number of schools:

1

OPERATIONAL EFFICIENCY

Spending by operational area



5-year spending trend

Total spending per pupil decreased by 8 percent. Spending in the classroom varied year to year, decreasing overall from 61.3 to 58.6 percent. Overall, spending on administration decreased substantially and spending on transportation and student support increased substantially. Spending on other nonclassroom areas varied year to year.

Cost measures relative to peer averages

Operational area	Measure	District	Peer average	State average
Administration	Cost per pupil	\$926	\$1,130	\$746
	Students per administrator	61	55	67
Plant operations	Cost per square foot	\$5.24	\$6.14	\$6.03
	Square footage per student	155	157	153
Food service	Cost per meal equivalent	\$3.07	\$2.74	\$2.58
Transportation	Cost per mile	\$2.57	\$3.58	\$3.55
	Cost per rider	\$443	\$462	\$1,015

Very low Low Comparable High Very high

Per pupil spending by operational area

	District		Peer average	State average	National average
	2012	2013	2013	2013	2011
Total	\$7,544	\$7,662	\$8,518	\$7,496	\$10,658
Classroom dollars	4,181	4,488	4,624	4,031	6,520
Nonclassroom dollars:	3,363	3,174	3,894	3,465	4,138
Administration	1,212	926	1,130	746	1,138
Plant operations	791	815	976	924	1,015
Food service	396	327	511	396	412
Transportation	387	433	537	369	452
Student support	371	537	499	582	593
Instruction support	206	136	241	448	528

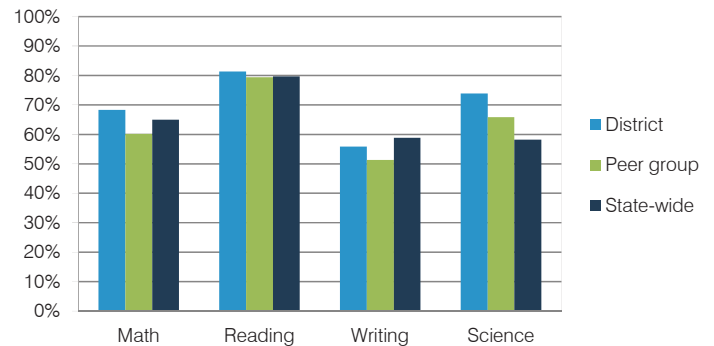
STUDENT ACHIEVEMENT, TEACHER MEASURES, AND FINANCIAL ASSESSMENT

ADE-reported district and school letter grades

District grade: **B**

Grade	Number of schools	Percentage of schools
A	0	0%
B	1	100%
C	0	0%
D	0	0%
F	0	0%
Not rated	0	0%

Students who met state standards (AIMS)



Student and teacher measures

Measure	District	Peer average	State average
Attendance rate	95%	95%	94%
Graduation rate (2012)	N/A	N/A	N/A
Poverty rate (2012)	19%	19%	25%
Students per teacher	14.9	11.0	18.3
Average teacher salary	\$40,985	\$42,053	\$45,264
Amount from Proposition 301	\$4,098	\$2,981	\$3,784
Average years of teacher experience	10.5	12.6	10.9
Percentage of teachers in first 3 years	14%	11%	19%

Financial stress assessment

Overall financial stress level: **Low**

Measure: 2011 through 2013

Assessment

Number of students attending district	Moderate decrease
Spending exceeded operating/capital budgets	No overspending
Spending increase election results	Voter-approved
Operating reserve percentage (max. 4%), trend	2.9%, Increasing
Years of capital reserve held	1 to 3 years
Current financial and internal control status	Compliant

Stress level

