

Continental Elementary School District

Pima County
Operational peer group: K
Legislative districts: 30

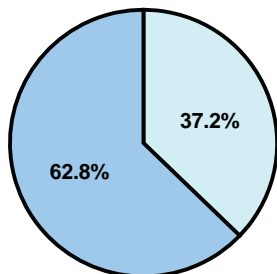
District size: Small
Students attending: 460
Number of schools: 1

OPERATIONAL EFFICIENCY

Average per-pupil spending

District
State

Classroom
\$4,964
\$4,497



Nonclassroom
\$2,946
\$3,411

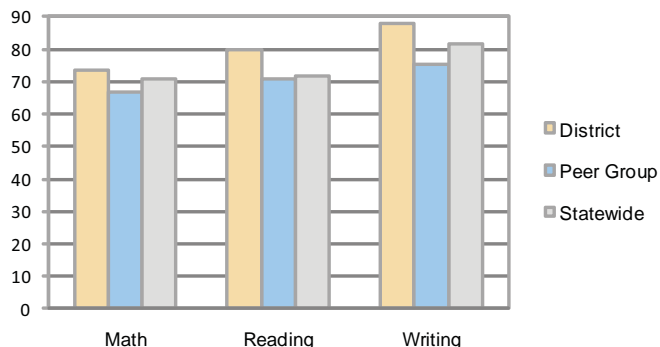
Total
\$7,910
\$7,908

5-year trend

Total spending per pupil decreased by 4 percent. Spending in the classroom was very inconsistent year to year and increased significantly overall from 58.3 to 62.8 percent. Spending on plant operations and transportation decreased significantly, while spending in other nonclassroom areas varied year to year.

STUDENT ACHIEVEMENT AND TEACHER INFORMATION

Percentage of students meeting state standards (AIMS)



Adequate Yearly Progress (AYP) toward federal goals

The District's school did not meet all applicable AYP objectives for NCLB because it failed to meet the percentage of students tested objective.

Student and teacher information

Measure	District	Peer average	State average
Attendance rate	96%	95%	95%
Graduation rate (2008)	N/A	79%	75%
Poverty rate	14%	14%	19%
Student/teacher ratio	14.8	14.7	17.1
Average teacher salary	\$44,311	\$43,600	\$45,209
Average years' experience	9.0	10.7	8.3
Percent of teachers in first 3 years	27%	23%	16%

District's cost measures relative to peer group

Operational Area	Measure	District	Peer Average	State Average
Administration	Cost per pupil	\$904	\$1,288	\$729
	Students per administrator	59	70	66
Plant Operations	Cost per square foot	\$5.13	\$6.94	\$6.40
	Square footage per student	164	149	144
Food Service	Cost per meal equivalent	\$2.65	\$3.05	\$2.53
Transportation	Cost per mile	\$1.57	\$2.22	\$3.36
	Miles per rider	129	268	271

Very Low Low Comparable High Very High

Per-pupil spending by function

	District		Peer 2009	State 2009	National 2007
	2008	2009			
Total	\$8,348	\$7,910	\$9,786	\$7,908	\$9,683
Classroom dollars	\$5,114	\$4,964	\$5,344	\$4,497	\$5,903
Nonclassroom dollars:	\$3,234	\$2,946	\$4,442	\$3,411	\$3,780
Administration	1,249	904	1,288	729	1,050
Plant Operations	860	840	1,162	920	951
Food Service	454	437	582	382	369
Transportation	259	231	512	343	406
Student Support	308	396	586	594	512
Instruction Support	104	138	311	431	470
Other	0	0	1	12	22

Proposition 301

Teacher pay

On average, each teacher earned an additional \$5,932 in salary.

Performance pay plan goals and results

Type of goal	Goal met?
Student achievement	■
Dropout/ graduation rates	
Student attendance	■
Parent/student satisfaction	
Teacher attendance	
Teacher professional development	
Teacher evaluations	■
Tutoring	
Other	

■ = yes, □ = no, and ▮ = partially