

# Classroom Dollars and Proposition 301 Results

## Continental Elementary School District

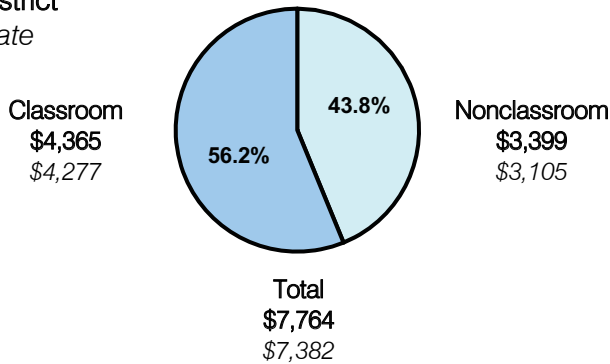
Pima County

District size: Small  
 Students attending: 324  
 Number of schools: 1  
 Number of certified teachers: 23

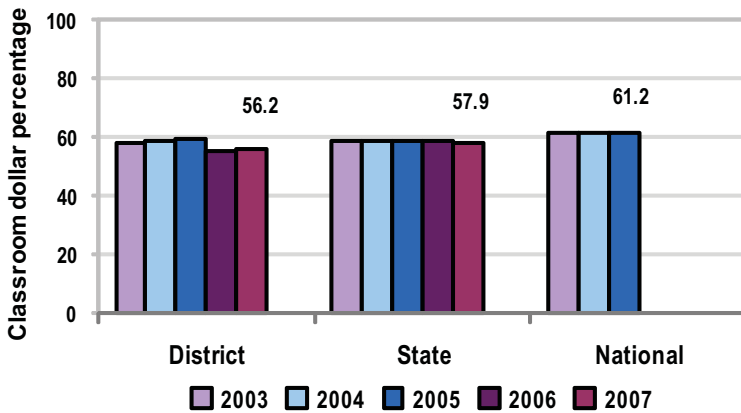
### Classroom Dollars

Fiscal year 2007 averages per pupil

District  
 State



5-year comparison



Expenditures by function

	District					State 2007	National 2005
	2003	2004	2005	2006	2007		
Classroom dollars	58.1	58.3	59.6	55.3	56.2	57.9	61.2
Nonclassroom dollars:							
Administration	12.3	11.2	11.7	13.1	14.4	9.5	11.0
Plant operations	13.0	12.5	11.7	12.7	11.1	11.3	9.6
Food service	5.2	5.8	5.4	5.0	5.5	4.7	3.9
Transportation	5.6	6.7	5.1	6.3	4.8	4.3	4.1
Student support	2.9	2.7	3.9	4.7	4.7	7.3	5.2
Instruction support	2.9	2.8	2.6	2.9	3.3	4.8	4.8
Other						0.2	0.2

### Comparative Information

	District			State 2007
	2005	2006	2007	
Student/teacher ratio	12.4	14.5	14.1	17.4
Average teacher salary	\$41,307	\$40,292	\$37,784	\$43,833
Average years' experience	7.6	7.8	8.1	8.1

Classroom dollar ranking: 93 of 229 districts.

### Proposition 301

#### District-reported 2007 results

##### Teacher pay

- On average, each teacher earned an additional \$5,104 in salary.

##### Performance

- The District accomplished its goals, which were based on district and individual performance.
- The District's school achieved an AZ LEARNS "excelling" label.
- The student attendance rate was at least 94 percent.
- All teachers attended professional development workshops once a month.

##### Menu

- Monies were used solely to increase teacher compensation.