

Coolidge Unified School District

Pinal County
Operational peer group: D
Legislative districts: 23

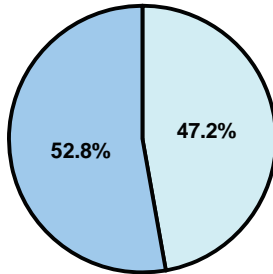
District size: Medium-Large
Students attending: 4,406
Number of schools: 7

OPERATIONAL EFFICIENCY

Average per-pupil spending

District
State

Classroom
\$4,373
\$4,497



Nonclassroom
\$3,908
\$3,411

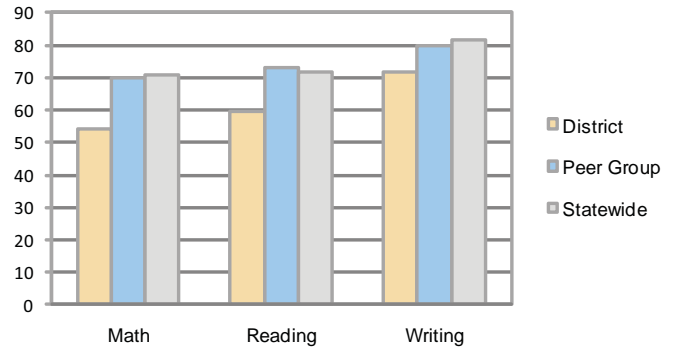
Total
\$8,281
\$7,908

5-year trend

Total spending per pupil increased by 23 percent. Spending in the classroom was very inconsistent year to year and increased overall from 51.9 to 52.8 percent. Spending on plant operations decreased, while spending in other nonclassroom areas varied year to year.

STUDENT ACHIEVEMENT AND TEACHER INFORMATION

Percentage of students meeting state standards (AIMS)



Adequate Yearly Progress (AYP) toward federal goals

4 schools met all applicable AYP objectives for NCLB. 3 schools failed to meet 1 or more of the following objectives: academic progress (3); percentage of students tested (1); graduation rate (1).

Student and teacher information

Measure	District	Peer average	State average
Attendance rate	93%	94%	95%
Graduation rate (2008)	50%	73%	75%
Poverty rate	17%	15%	19%
Student/teacher ratio	15.6	17.2	17.1
Average teacher salary	\$40,486	\$42,175	\$45,209
Average years' experience	6.6	8.4	8.3
Percent of teachers in first 3 years	40%	34%	16%

District's cost measures relative to peer group

Operational Area	Measure	District	Peer Average	State Average
Administration	Cost per pupil	\$994	\$775	\$729
	Students per administrator	52	61	66
Plant Operations	Cost per square foot	\$6.15	\$6.13	\$6.40
	Square footage per student	150	168	144
Food Service	Cost per meal equivalent	\$2.83	\$2.64	\$2.53
Transportation	Cost per mile	\$2.41	\$2.96	\$3.36
	Miles per rider	417	307	271

Very Low Low Comparable High Very High

Per-pupil spending by function

	District		Peer	State	National
	2008	2009	2009	2009	2007
Total	\$7,231	\$8,281	\$7,896	\$7,908	\$9,683
Classroom dollars	\$3,757	\$4,373	\$4,312	\$4,497	\$5,903
Nonclassroom dollars:	\$3,474	\$3,908	\$3,584	\$3,411	\$3,780
Administration	821	994	775	729	1,050
Plant Operations	802	924	1,032	920	951
Food Service	374	381	365	382	369
Transportation	473	465	397	343	406
Student Support	669	759	629	594	512
Instruction Support	335	385	380	431	470
Other	0	0	6	12	22

Proposition 301

Teacher pay

On average, each teacher earned \$6,084 in additional salary, and each librarian, speech pathologist, and counselor earned an additional \$2,300.

Performance pay plan goals and results

Type of goal	Goal met?
Student achievement	■
Dropout/ graduation rates	
Student attendance	
Parent/student satisfaction	
Teacher attendance	
Teacher professional development	▲
Teacher evaluations	
Tutoring	
Other	▲

■ = yes, □ = no, and ▲ = partially