

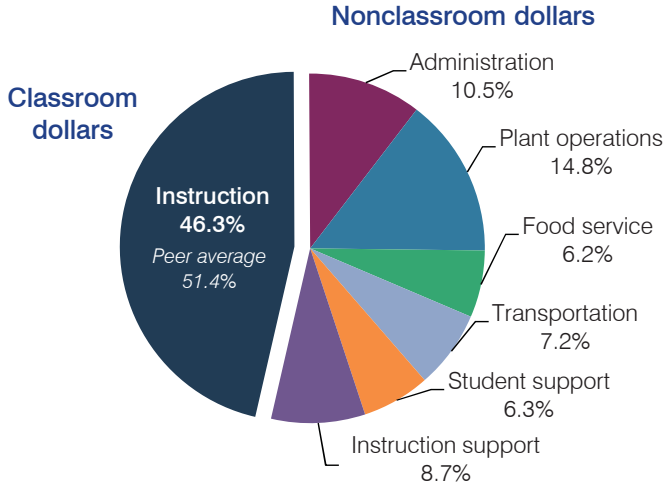
Coolidge Unified School District

Pinal County
 Efficiency peer groups 4 and T-9, Achievement peer group 5
 Legislative district(s): 8 and 12

District size, location: Medium-large, Town
 Students attending: 3,393
 Number of schools: 8

OPERATIONAL EFFICIENCY

Spending by operational area



Efficiency measures relative to peer averages

Operational area	Measure	District	Peer average	State average
Administration	Cost per pupil	\$800	\$798	\$780
	Students per administrative position	63	65	67
Plant operations	Cost per square foot	\$4.40	\$5.52	\$6.09
	Square footage per student	256	191	153
Food service	Cost per meal equivalent	\$3.62	\$2.80	\$2.79
Transportation	Cost per mile	\$2.33	\$2.13	\$3.66
	Cost per rider	\$1,285	\$958	\$1,071

Very low Low Comparable High Very high

Per pupil spending

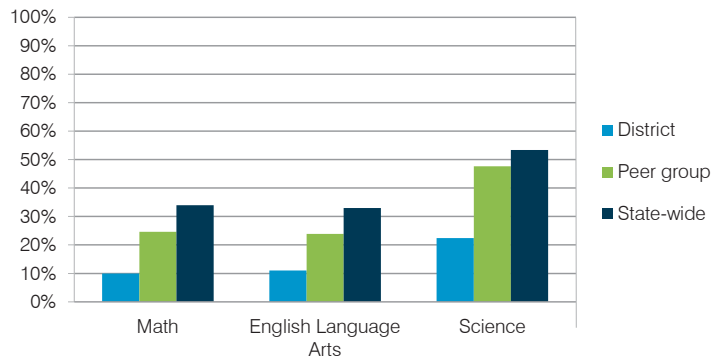
Spending by area	District		Peer average	State average
	2014	2015	2015	2015
Instruction	\$ 3,259	\$ 3,521	\$ 3,941	\$ 4,105
Administration	785	800	798	780
Plant operations	1,026	1,126	1,045	930
Food service	463	470	419	417
Transportation	534	545	411	371
Student support	524	476	597	613
Instruction support	541	666	479	442
Total operational	\$ 7,132	\$ 7,604	\$ 7,690	\$ 7,658
Land and buildings	\$ 192	\$ 454	\$ 382	\$ 641
Equipment	696	407	281	383
Interest	215	441	200	225
Other	19	17	59	150
Total nonoperational	\$ 1,122	\$ 1,319	\$ 922	\$ 1,399
Total per pupil spending	\$ 8,254	\$ 8,923	\$ 8,612	\$ 9,057

STUDENT AND TEACHER MEASURES, FINANCIAL ASSESSMENT, AND REVENUE

Student and teacher measures

Measure	District	Peer average	State average
Attendance rate	93%	94%	94%
Graduation rate (2014)	65%	81%	76%
Poverty rate (2014)	21%	24%	23%
Students per teacher	20.2	16.7	18.6
Average teacher salary	\$41,715	\$43,855	\$46,008
Average years of teacher experience	10.2	12.3	11.0
Percentage of teachers in first 3 years	26%	18%	20%

Students who met state standards



Financial stress assessment

Overall financial stress level: **Moderate**

Measure: 2013 through 2015	Assessment
Change in number of district students	Moderate decrease
Spending exceeded operating/capital budgets	No overspending
Spending increase election results	Voter-rejected
Operating reserve percentage (max. 4%), trend	4.0%, Steady
Years of capital reserve held	Less than 1 year
Current financial and internal control status	Compliant

Low Moderate High

Per pupil revenues

Revenues by source	District		Peer average	State average
	2014	2015	2015	2015
Federal	\$ 1,348	\$ 1,615	\$ 2,889	\$ 1,299
State	3,626	3,655	3,860	3,517
Local	3,521	3,851	2,930	4,248
Total revenues per pupil	\$ 8,495	\$ 9,121	\$ 9,679	\$ 9,064
Select revenues from common sources				
Equalization formula funding	\$ 5,719	\$ 5,637	\$ 5,185	\$ 5,303
Grants	1,401	1,591	1,573	1,167
Donations and tax credits	21	10	48	78
Select revenues from less common sources				
			Number of peers receiving	
Desegregation	\$ 0	\$ 0	1 of 18	
Small school adjustment	0	0	0 of 18	
Federal impact aid	66	76	7 of 18	
Voter-approved levy increases	640	691	15 of 18	

Coolidge USD—page 2

Classroom dollar percentage

Year:	2001	2002	2003	2004	2005	2006	2007	2008	2009	2010	2011	2012	2013	2014	2015
Percentage:	53.3	54.9	51.9	51.9	54.3	54.4	55.7	52.0	52.8	47.3	50.2	47.6	44.9	45.7	46.3

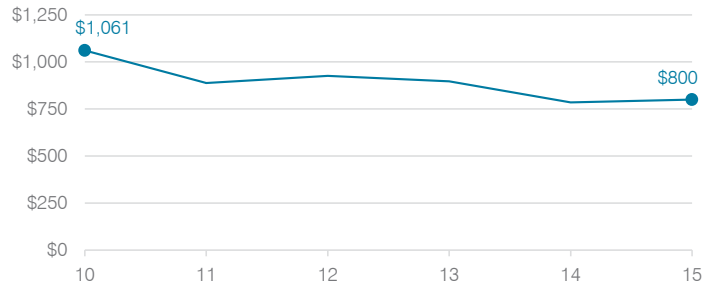
OPERATIONAL TRENDS

Fiscal years as indicated

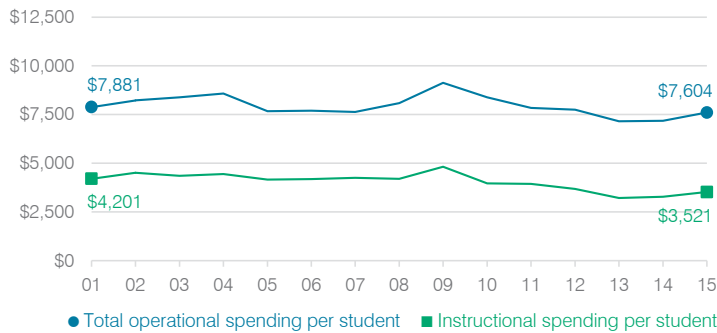
5-year spending trend (2010 through 2015)

Total operational spending per pupil, adjusted for inflation, decreased by 9 percent. The percentage of dollars spent in the classroom varied year to year, decreasing overall from 47.3 to 46.3 percent. Overall, as a percentage of total operational spending, instruction support increased substantially and plant operations, food service, and transportation increased. Administration and student support decreased substantially.

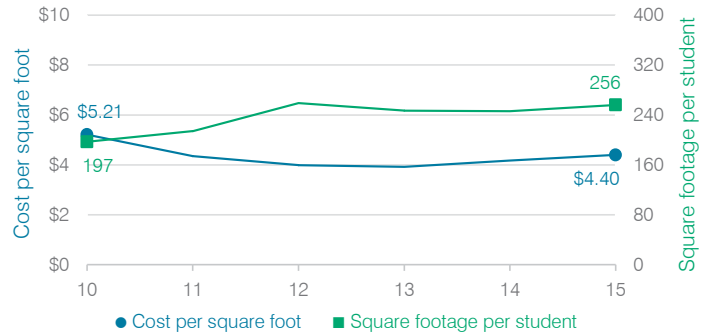
Administrative cost per student



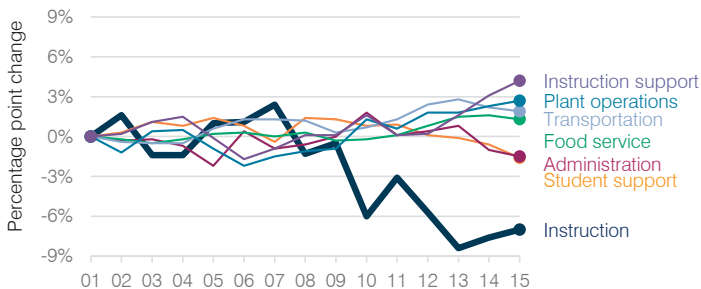
Total operational and instructional spending per student (inflation adjusted to 2015 dollars)



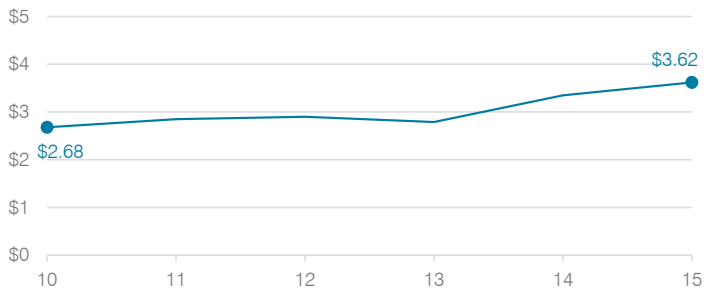
Plant cost per square foot and square footage per student



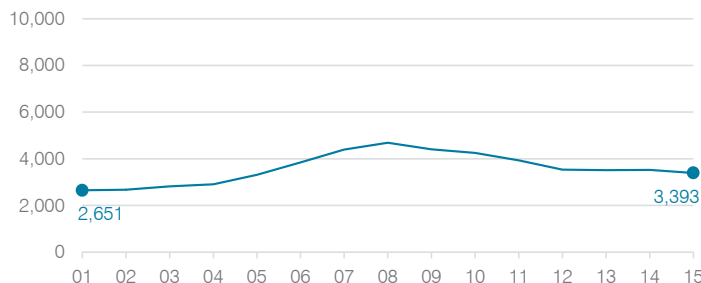
Changes in operational spending percentages



Food service cost per meal



Students attending



Transportation costs per mile and per rider

