

Cottonwood-Oak Creek Elementary School District

Yavapai County

Efficiency peer groups 9 and T-7, Achievement peer group 18

Legislative district(s): 1 and 6

District size, location:

Medium, Town

Students attending:

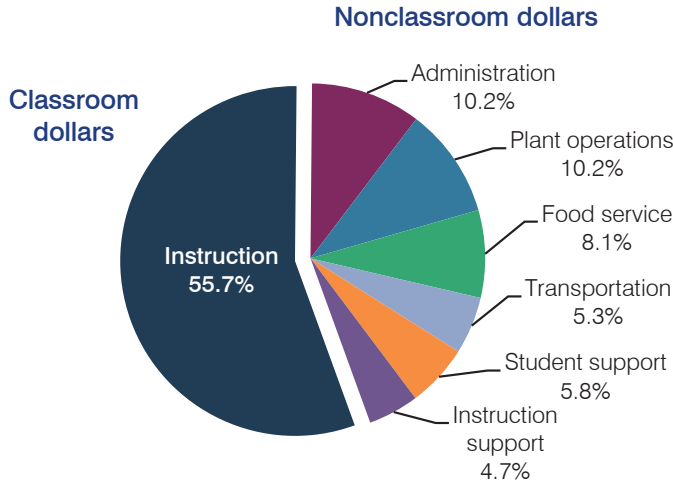
1,982

Number of schools:

5

OPERATIONAL EFFICIENCY

Spending by operational area



5-year spending trend

Total spending per pupil returned to 2008 levels. Spending in the classroom was very inconsistent year to year, ranging from a high of 57 percent to a low of 47.8 percent. Overall, spending on administration decreased substantially and spending on instruction support increased substantially. Spending on other nonclassroom areas varied year to year.

Cost measures relative to peer averages

| Operational area | Measure | District | Peer average | State average |
|------------------|----------------------------|----------|--------------|---------------|
| Administration | Cost per pupil | \$725 | \$883 | \$746 |
| | Students per administrator | 50 | 65 | 67 |
| Plant operations | Cost per square foot | \$4.73 | \$6.31 | \$6.03 |
| | Square footage per student | 154 | 135 | 153 |
| Food service | Cost per meal equivalent | \$2.64 | \$2.63 | \$2.58 |
| Transportation | Cost per mile | \$2.89 | \$3.06 | \$3.55 |
| | Cost per rider | \$786 | \$677 | \$1,015 |

Very low Low Comparable High Very high

Per pupil spending by operational area

| | District | | Peer average | State average | National average |
|------------------------------|----------------|----------------|----------------|----------------|------------------|
| | 2012 | 2013 | 2013 | 2013 | 2011 |
| Total | \$7,345 | \$7,135 | \$7,185 | \$7,496 | \$10,658 |
| Classroom dollars | 3,718 | 3,975 | 3,621 | 4,031 | 6,520 |
| Nonclassroom dollars: | 3,627 | 3,160 | 3,564 | 3,465 | 4,138 |
| Administration | 1,020 | 725 | 883 | 746 | 1,138 |
| Plant operations | 884 | 729 | 836 | 924 | 1,015 |
| Food service | 540 | 579 | 535 | 396 | 412 |
| Transportation | 349 | 377 | 431 | 369 | 452 |
| Student support | 441 | 415 | 435 | 582 | 593 |
| Instruction support | 393 | 335 | 444 | 448 | 528 |

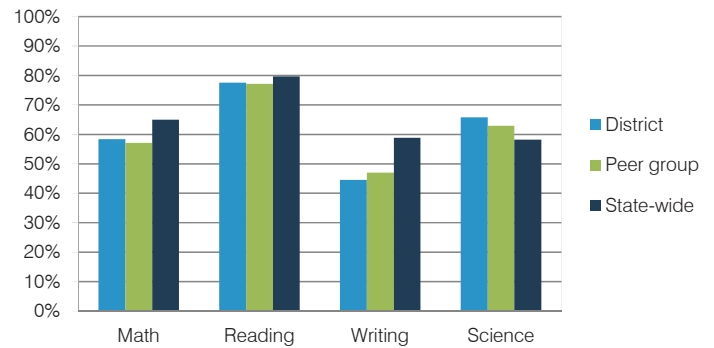
STUDENT ACHIEVEMENT, TEACHER MEASURES, AND FINANCIAL ASSESSMENT

ADE-reported district and school letter grades

District grade: **B**

| Grade | Number of schools | Percentage of schools |
|-----------|-------------------|-----------------------|
| A | 0 | 0% |
| B | 3 | 60% |
| C | 2 | 40% |
| D | 0 | 0% |
| F | 0 | 0% |
| Not rated | 0 | 0% |

Students who met state standards (AIMS)



Student and teacher measures

| Measure | District | Peer average | State average |
|---|----------|--------------|---------------|
| Attendance rate | 94% | 95% | 94% |
| Graduation rate (2012) | N/A | N/A | N/A |
| Poverty rate (2012) | 24% | 24% | 25% |
| Students per teacher | 17.6 | 12.4 | 18.3 |
| Average teacher salary | \$40,767 | \$45,242 | \$45,264 |
| Amount from Proposition 301 | \$3,870 | \$2,827 | \$3,784 |
| Average years of teacher experience | 12.5 | 13.6 | 10.9 |
| Percentage of teachers in first 3 years | 13% | 12% | 19% |

Financial stress assessment

Overall financial stress level: **Low**

Measure: 2011 through 2013

Assessment

| | |
|---|------------------|
| Number of students attending district | Steady |
| Spending exceeded operating/capital budgets | No overspending |
| Spending increase election results | Voter-approved |
| Operating reserve percentage (max. 4%), trend | 0.8%, Decreasing |
| Years of capital reserve held | 1 to 3 years |
| Current financial and internal control status | Compliant |

Stress level

