

Classroom Dollars and Proposition 301 Results

Crane Elementary School District

Yuma County

District size: Large
 Students attending: 5,935
 Number of schools: 10
 Number of certified teachers: 329

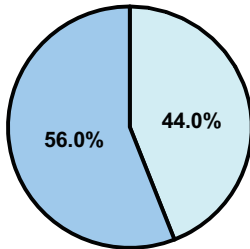
Classroom Dollars

Fiscal year 2008 averages per pupil

District

State

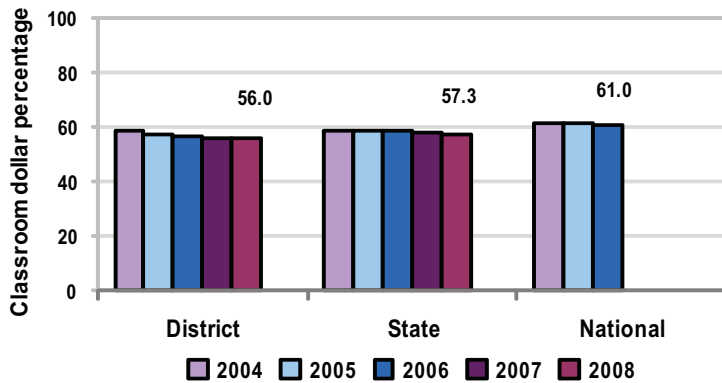
Classroom
 \$3,966
 \$4,480



Nonclassroom
 \$3,119
 \$3,333

Total
 \$7,085
 \$7,813

5-year comparison



Expenditures by function

	District					State 2008	National 2006
	2004	2005	2006	2007	2008		
Classroom dollars	58.8	57.4	56.5	55.8	56.0	57.3	61.0
Nonclassroom dollars:							
Administration	11.0	12.0	12.4	12.0	12.1	9.2	10.8
Plant operations	11.3	10.4	9.4	11.4	10.4	11.3	9.9
Food service	5.6	5.6	5.7	5.7	6.5	4.8	3.8
Transportation	3.4	3.3	3.5	3.5	3.8	4.4	4.2
Student support	4.7	4.7	5.6	4.8	5.1	7.4	5.2
Instruction support	5.2	6.6	6.9	6.8	6.1	5.4	4.9
Other						0.2	0.2

Comparative Information

	District			State
	2006	2007	2008	2008
Student/teacher ratio	18.0	17.6	18.0	17.3
Average teacher salary	\$42,317	\$39,290	\$42,565	\$44,967
Average years' experience	7.4	7.6	8.1	8.1

Classroom dollar ranking: 101 of 230 districts.

Proposition 301

District-reported 2008 results

Teacher pay

- On average, each teacher, counselor, and professional development teacher earned between \$4,578 and \$4,720 in additional salary, and each speech pathologist earned an additional \$1,568.

Performance

- The District accomplished most of its goals, which were similar to the prior fiscal year's goals and were based on district, school, and individual performance.
- Reading leadership teams were established to help improve student achievement in reading.
- Each teacher tutored 5 at-risk students in reading.
- Parent surveys indicated that parents are satisfied with the schools.
- Every certified teacher received instructional coaching 3 times during the school year.
- Annual teacher evaluations showed improved teaching skills.

Menu

- Monies were used to pay for 9 teachers to reduce class sizes, 4.5 professional development teachers to assist with professional development activities, and 3 alternative school programs to serve students who otherwise may have been suspended or expelled.