

Classroom Dollars and Proposition 301 Results

Crane Elementary School District

Yuma County

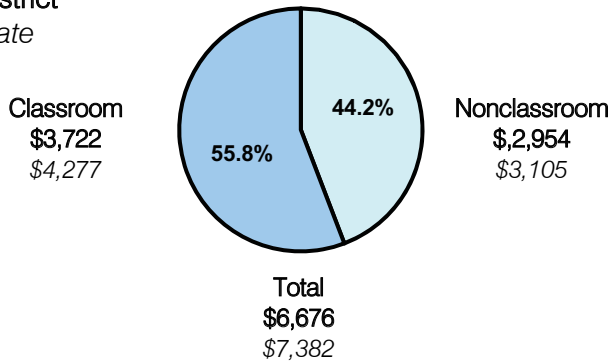
District size: Large
 Students attending: 5,929
 Number of schools: 9
 Number of certified teachers: 336

Classroom Dollars

Fiscal year 2007 averages per pupil

District

State

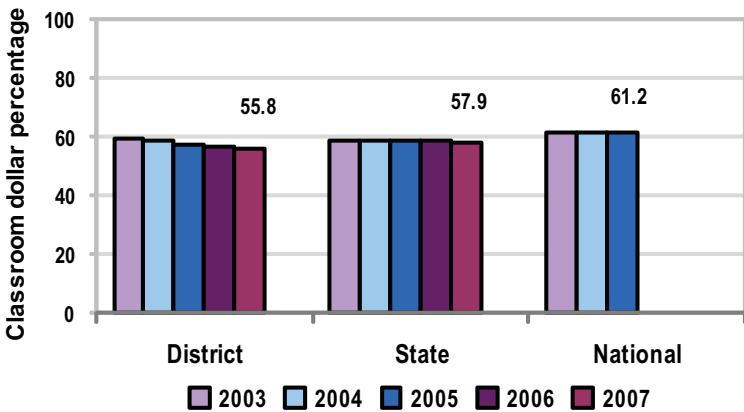


Comparative Information

	District			State
	2005	2006	2007	2007
Student/teacher ratio	18.6	18.0	17.6	17.4
Average teacher salary	\$35,750	\$42,317	\$39,290	\$43,833
Average years' experience	7.4	7.4	7.6	8.1

Classroom dollar ranking: 99 of 229 districts.

5-year comparison



Expenditures by function

	District					State	National
	2003	2004	2005	2006	2007	2007	2005
Classroom dollars	59.0	58.8	57.4	56.5	55.8	57.9	61.2
Nonclassroom dollars:							
Administration	10.9	11.0	12.0	12.4	12.0	9.5	11.0
Plant operations	11.6	11.3	10.4	9.4	11.4	11.3	9.6
Food service	5.8	5.6	5.6	5.7	5.7	4.7	3.9
Transportation	3.5	3.4	3.3	3.5	3.5	4.3	4.1
Student support	4.9	4.7	4.7	5.6	4.8	7.3	5.2
Instruction support	4.3	5.2	6.6	6.9	6.8	4.8	4.8
Other						0.2	0.2

Proposition 301

District-reported 2007 results

Teacher pay

- On average, each teacher, speech pathologist, and counselor earned between \$3,496 and \$3,530 in additional salary.

Performance

- The District accomplished most of its goals, which were similar to the prior fiscal year's goals and were based on district, school, and individual performance.
- Reading leadership teams were established to help improve student achievement in reading.
- Each teacher tutored 5 at-risk students in reading.
- Parent surveys indicated that parents are satisfied with the schools.
- Every certified teacher received instructional coaching three times during the school year.

Menu

- Monies were used to pay for 19 teachers to reduce class sizes, 5 facilitators to assist with professional development activities, and 3 alternative school programs to serve students who otherwise may have been suspended or expelled.