

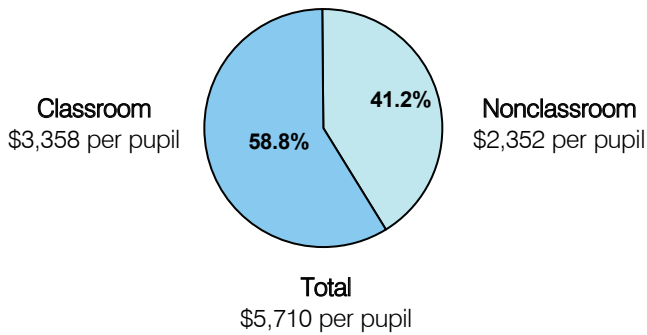
Classroom Dollars and Proposition 301 Results

Crane Elementary School District

District size: Large
 Students attending: 5,607
 Number of schools: 7
 Number of certified teachers: 302

Classroom Dollars

Fiscal year 2004

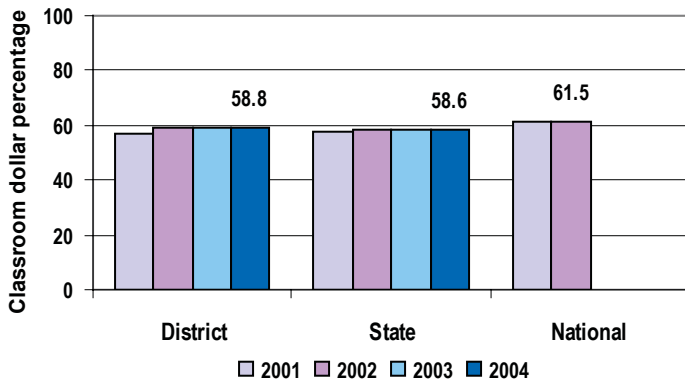


Comparative Information

	District			State
	2002	2003	2004	2004
Student/teacher ratio	18.7	17.7	18.6	18.2
Average teacher salary	\$35,880	\$35,265	\$33,000	\$38,534
Average years' experience	8.4	8.1	7.7	8.7

Classroom dollar ranking: 61 of 227 districts.

4-year comparison



Expenditures by function

	Percentage					
	District				State	National
	2001	2002	2003	2004	2004	2001
Classroom dollars	56.8	59.4	59.0	58.8	58.6	61.5
Nonclassroom dollars:						
Administration	13.8	12.8	10.9	11.0	9.5	10.9
Plant operations	9.8	10.0	11.6	11.3	11.7	9.7
Food service	6.9	6.4	5.8	5.6	4.7	4.0
Transportation	3.7	3.6	3.5	3.4	4.0	4.1
Student support	5.5	4.9	4.9	4.7	7.0	5.0
Instruction support	3.3	2.9	4.3	5.2	4.3	4.6
Other	0.2				0.2	0.2

Proposition 301

District-reported 2004 results

Teacher pay

- On average, each teacher earned an additional \$2,633 in salary, each librarian earned an additional \$900, and each counselor, facilitator, and staff development coordinator earned between \$1,639 and \$1,800.

Performance

- The District accomplished its goals, which were based on school and individual performance.
- Goals called for a 7 percent increase in the number of students reading at grade level, and for each teacher to tutor 5 students in reading.

Menu

- Monies were primarily used to add 13 full-time-equivalent teaching positions to reduce class sizes.
- 1 school offered before- and after-school AIMS intervention activities.
- 20 students, who otherwise may have been suspended or expelled, received instruction in an alternative setting.
- Additionally, monies continued to be used to pay 2 facilitators to assist with professional development activities.