

# Creighton Elementary School District

Maricopa County

Efficiency peer groups 8 and T-2, Achievement peer group 15

Legislative district(s): 24, 27 and 28

District size, location:

Medium-Large, City

Students attending:

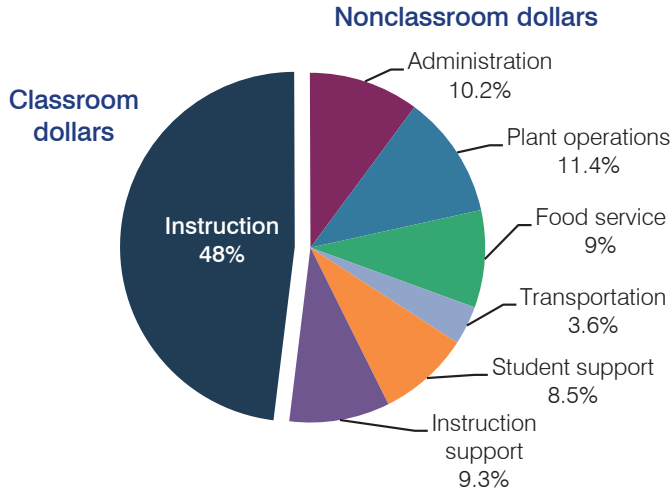
6,214

Number of schools:

9

## OPERATIONAL EFFICIENCY

### Spending by operational area



### 5-year spending trend

Total spending per pupil decreased by 7 percent. Spending in the classroom varied year to year, decreasing overall from 52.1 to 48 percent. Spending on food service increased substantially. Overall, spending on plant operations increased slightly and spending in most other nonclassroom areas remained fairly stable.

### Cost measures relative to peer averages

Operational area	Measure	District	Peer average	State average
Administration	Cost per pupil	\$786	\$791	\$746
	Students per administrator	62	69	67
Plant operations	Cost per square foot	\$5.51	\$6.28	\$6.03
	Square footage per student	160	138	153
Food service	Cost per meal equivalent	\$2.69	\$2.54	\$2.58
Transportation	Cost per mile	\$6.96	\$5.18	\$3.55
	Cost per rider	\$1,544	\$824	\$1,015

Very low   Low   Comparable   High   Very high

### Per pupil spending by operational area

	District		Peer average	State average	National average
	2012	2013	2013	2013	2011
<b>Total</b>	<b>\$8,234</b>	<b>\$7,722</b>	<b>\$7,193</b>	<b>\$7,496</b>	<b>\$10,658</b>
<b>Classroom dollars</b>	<b>4,141</b>	<b>3,707</b>	<b>3,672</b>	<b>4,031</b>	<b>6,520</b>
<b>Nonclassroom dollars:</b>	<b>4,093</b>	<b>4,015</b>	<b>3,521</b>	<b>3,465</b>	<b>4,138</b>
Administration	846	786	791	746	1,138
Plant operations	877	883	842	924	1,015
Food service	710	693	541	396	412
Transportation	264	274	273	369	452
Student support	683	658	541	582	593
Instruction support	713	721	533	448	528

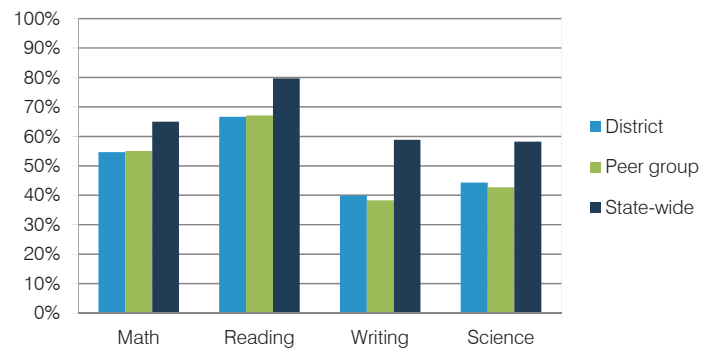
## STUDENT ACHIEVEMENT, TEACHER MEASURES, AND FINANCIAL ASSESSMENT

### ADE-reported district and school letter grades

District grade: **C**

Grade	Number of schools	Percentage of schools
A	0	0%
B	2	22%
C	6	67%
D	1	11%
F	0	0%
Not rated	0	0%

### Students who met state standards (AIMS)



### Student and teacher measures

Measure	District	Peer average	State average
Attendance rate	94%	94%	94%
Graduation rate (2012)	N/A	N/A	N/A
Poverty rate (2012)	50%	50%	25%
Students per teacher	18.0	18.8	18.3
Average teacher salary	\$42,841	\$46,010	\$45,264
Amount from Proposition 301	\$3,061	\$2,972	\$3,784
Average years of teacher experience	6.5	8.7	10.9
Percentage of teachers in first 3 years	54%	32%	19%

### Financial stress assessment

Overall financial stress level: **Moderate**

Measure: 2011 through 2013

Measure	Assessment
Number of students attending district	Steady
Spending exceeded operating/capital budgets	No overspending
Spending increase election results	Voter-rejected
Operating reserve percentage (max. 4%), trend	1.3%, Increasing
Years of capital reserve held	More than 3 years
Current financial and internal control status	Compliant

Stress level

