

Creighton Elementary School District

Maricopa County

Peer groups: Efficiency Group 9, Achievement Group 16

Legislative district(s): 11, 14 and 15

District size: Medium-Large

Students attending: 6,236

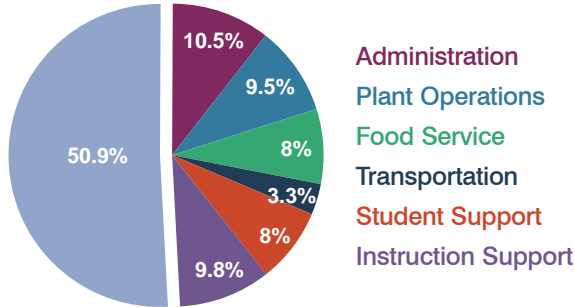
Number of schools: 9

OPERATIONAL EFFICIENCY

Spending by operational area

Classroom dollars

Nonclassroom dollars

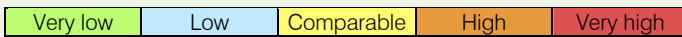


5-year trend

Total spending per pupil increased by 21 percent. Spending in the classroom varied year to year, decreasing significantly overall from 55 to 50.9 percent. Spending on administration, food service, and instruction support increased significantly, and spending on plant operations and student support decreased. Spending on transportation remained fairly stable.

District's cost measures relative to peer group

Operational Area	Measure	District	Peer Average	State Average
Administration	Cost per pupil	\$906	\$828	\$728
	Students per administrator	62	72	66
Plant Operations	Cost per square foot	\$5.86	\$6.46	\$6.10
	Square footage per student	141	132	152
Food Service	Cost per meal equivalent	\$2.54	\$2.30	\$2.45
Transportation	Cost per mile	\$6.87	\$5.00	\$3.39
	Miles per rider	137	136	283



Per-pupil spending by operational area

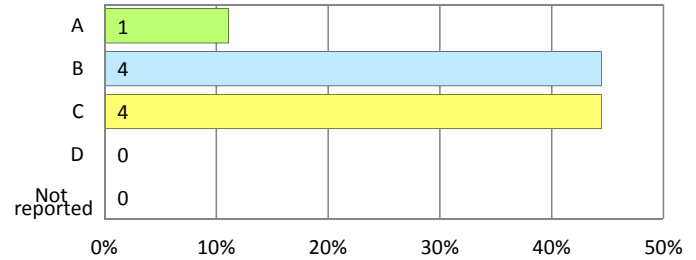
	District		Peer 2011	State 2011	National 2009
	2010	2011			
Total	\$8,794	\$8,668	\$7,334	\$7,485	\$10,591
Classroom dollars	\$4,688	\$4,416	\$3,806	\$4,098	\$6,456
Nonclassroom dollars:	\$4,106	\$4,252	\$3,528	\$3,387	\$4,135
Administration	883	906	828	728	1,147
Plant Operations	763	825	854	927	1,033
Food Service	620	693	507	375	404
Transportation	278	288	268	352	443
Student Support	668	695	554	571	573
Instruction Support	894	845	517	434	535

STUDENT ACHIEVEMENT AND TEACHER INFORMATION

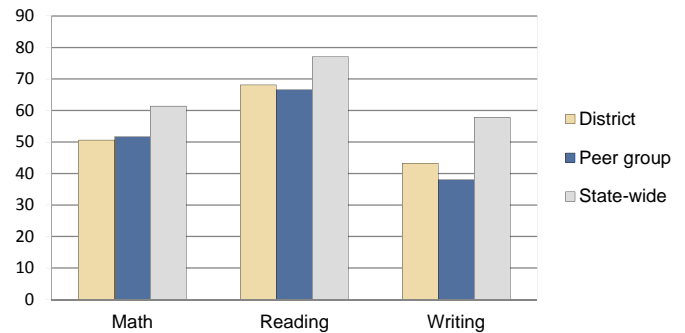
District and school letter grades

District grade: **B**

School grades (number and percentage):



Percentage of students meeting state standards (AIMS)



Student and teacher information

Measure	District	Peer Average	State Average
Attendance rate	95%	95%	95%
Graduation rate (2010)	N/A	N/A	N/A
Poverty rate (2010)	48%	46%	22%
Students per teacher	15.7	17.6	18.1
Average teacher salary	\$43,911	\$45,321	\$45,637
Average years of experience	8.6	9.5	10.9
Percent of teachers in first 3 years	27%	21%	16%

Proposition 301 pay, goals, and results

Average additional salary earned by teachers: \$3,580

Type of goal	Goal met?
Student achievement	■
Dropout/graduation rates	-
Student attendance	■
Parent/student satisfaction	-
Teacher attendance	-
Teacher professional development	■
Teacher evaluations	-
Tutoring	-
Other	■

■ = yes, □ = no, ▴ = partially, and - = no goal set