

# Classroom Dollars and Proposition 301 Results

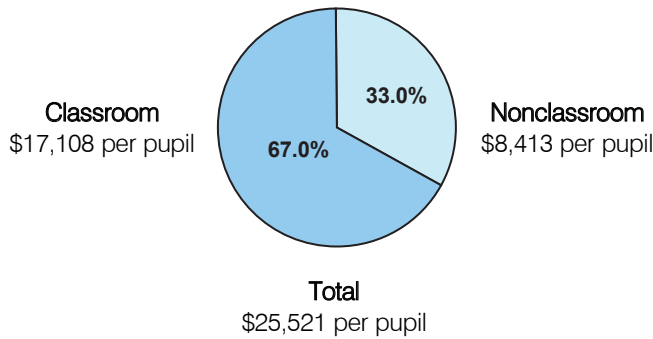
## Crown King Elementary School District

Yavapai County

District size: Very Small  
 Students attending: 4  
 Number of schools: 1  
 Number of certified teachers: 1

### Classroom Dollars

Fiscal year 2005

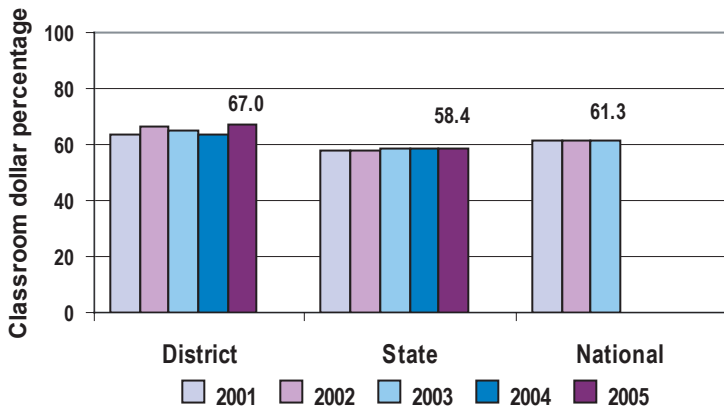


### Comparative Information

	District			State
	2003	2004	2005	2005
Student/teacher ratio	5.0	7.0	4.0	18.3
Average teacher salary	n/a	n/a	n/a	\$39,095
Average years' experience	15.0	15.0	n/a	8.5

Classroom dollar ranking: 6 of 228 districts.

### 5-year comparison



### Expenditures by function

	Percentage						
	District					State	National
	2001	2002	2003	2004	2005	2005	2002
Classroom dollars	63.9	66.5	64.7	63.9	67.0	58.4	61.5
Nonclassroom dollars:							
Administration	10.4	13.2	11.8	11.6	17.5	9.5	11.1
Plant operations	14.5	11.2	12.3	15.2	13.3	11.4	9.5
Food service						4.8	4.0
Transportation	0.7	1.0	0.6	0.5	0.5	4.1	4.0
Student support	8.3	7.2	9.5	8.8	1.3	7.0	5.0
Instruction support	2.2	0.9	1.1		0.3	4.6	4.7
Other					0.1	0.2	0.2

### Proposition 301

#### District-reported 2005 results

##### Teacher pay

- The teacher earned an additional \$1,404 in salary.

##### Performance

- The teacher accomplished the goal, which was the same as the prior fiscal year's goal and required the teacher to receive an acceptable performance evaluation.

##### Menu

- Monies were used for additional teacher compensation to help pay for health insurance premiums.