

Classroom Dollars and Proposition 301 Results

Crown King Elementary School District

Yavapai County

District size: Very Small
 Students attending: 6
 Number of schools: 1
 Number of certified teachers: 1

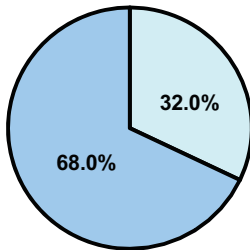
Classroom Dollars

Fiscal year 2008 averages per pupil

District

State

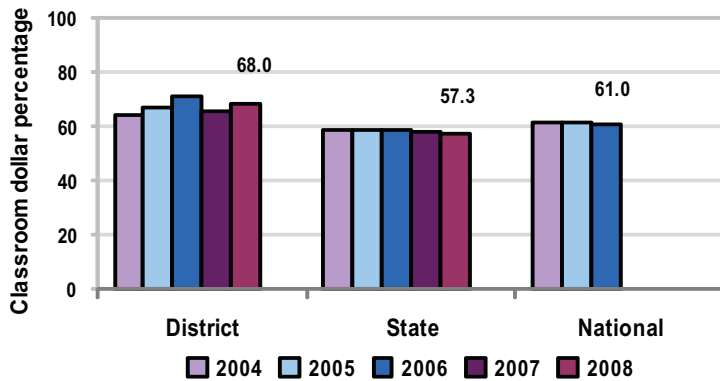
Classroom
 \$11,552
 \$4,480



Nonclassroom
 \$5,432
 \$3,333

Total
 \$16,984
 \$7,813

5-year comparison



Expenditures by function

	District					State 2008	National 2006
	2004	2005	2006	2007	2008		
Classroom dollars	63.9	67.0	71.2	65.6	68.0	57.3	61.0
Nonclassroom dollars:							
Administration	11.6	17.5	14.6	14.8	14.3	9.2	10.8
Plant operations	15.2	13.3	11.7	17.3	16.8	11.3	9.9
Food service						4.8	3.8
Transportation	0.5	0.5	0.7	0.8	0.8	4.4	4.2
Student support	8.8	1.3	1.8	0.8		7.4	5.2
Instruction support		0.3		0.7	0.1	5.4	4.9
Other		0.1				0.2	0.2

Comparative Information

	District			State 2008
	2006	2007	2008	
Student/teacher ratio	6.0	4.0	6.0	17.3
Average teacher salary	n/a	n/a	n/a	\$44,967
Average years' experience	n/a	15.0	n/a	8.1

Classroom dollar ranking: 3 of 230 districts.

Proposition 301

District-reported 2008 results

Teacher pay

- The teacher earned \$1,149 in additional salary, and the instructional aide earned an additional \$126.

Performance

- The teacher accomplished the goal, which was the same as the prior fiscal year's goal and required the teacher to receive an acceptable performance evaluation.

Menu

- Monies continued to be used for additional teacher compensation to help pay for health insurance premiums.