

# Crown King Elementary School District

Yavapai County

Efficiency peer group 11 and Achievement peer group 17

Legislative district(s): 1

District size, location:

Very small, Rural

Students attending:

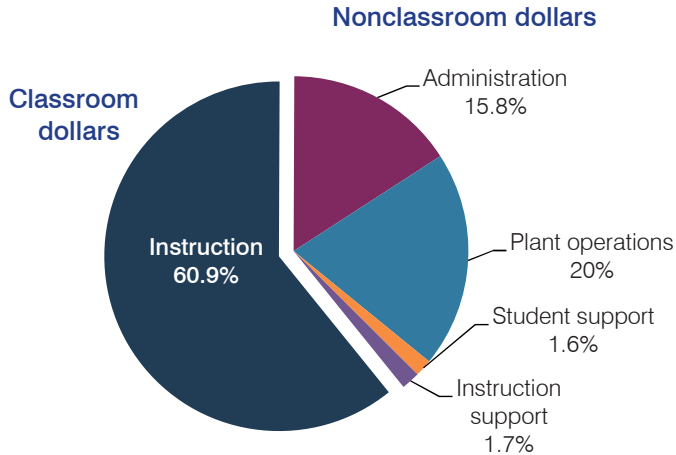
4

Number of schools:

1

## OPERATIONAL EFFICIENCY

### Spending by operational area



### 5-year spending trend (2009 through 2014)

Student enrollment decreased by 36 percent, which contributed to the 37 percent increase in total spending per pupil. Spending in the classroom varied year to year, decreasing overall from 68.3 to 60.9 percent. Spending on some nonclassroom areas also varied year to year, as is common for very small districts. Overall, spending on administration increased substantially.

### Cost measures relative to peer averages

Operational area	Measure	District	Peer average	State average
Administration	Cost per pupil	\$3,886	\$2,835	\$757
	Students per administrator	3	28	68
Plant operations	Cost per square foot	\$9.64	\$6.51	\$6.04
	Square footage per student	509	351	153
Food service	Cost per meal equivalent	N/A	\$5.02	\$2.69
Transportation	Cost per mile	N/A	N/A	\$3.62
	Cost per rider	N/A	N/A	\$1,036

### Per pupil spending by operational area

	District		Peer average	State average	National average
	2013	2014	2014	2014	2012
<b>Total</b>	<b>\$37,032</b>	<b>\$24,578</b>	<b>\$16,101</b>	<b>\$7,578</b>	<b>\$10,667</b>
<b>Classroom dollars</b>	<b>20,217</b>	<b>14,964</b>	<b>8,231</b>	<b>4,073</b>	<b>6,495</b>
<b>Nonclassroom dollars:</b>	<b>16,815</b>	<b>9,614</b>	<b>7,870</b>	<b>3,505</b>	<b>4,172</b>
Administration	6,230	3,886	2,835	757	1,160
Plant operations	9,003	4,908	2,137	923	1,008
Food service	0	0	901	405	429
Transportation	0	0	1,072	373	464
Student support	935	402	536	600	594
Instruction support	647	418	389	447	517

## STUDENT ACHIEVEMENT, TEACHER MEASURES, AND FINANCIAL ASSESSMENT

### ADE-reported district and school letter grades

District grade: **N/A**

Grade	Number of schools	Percentage of schools
A	0	0%
B	0	0%
C	0	0%
D	0	0%
F	0	0%
Not rated	1	100%

### Students who met state standards (AIMS)

AIMS scores are not shown because the District had ten or fewer students.

### Student and teacher measures

Measure	District	Peer average	State average
Attendance rate	93%	94%	95%
Graduation rate (2013)	N/A	N/A	N/A
Poverty rate (2013)	20%	20%	24%
Students per teacher	3.7	12.3	18.6
Average teacher salary	N/A	\$43,736	\$46,026
Amount from Proposition 301	N/A	\$3,455	\$4,810
Average years of teacher experience	N/A	11.8	10.9
Percentage of teachers in first 3 years	N/A	15%	20%

### Financial stress assessment

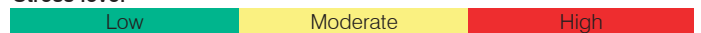
Overall financial stress level: **Low**

Measure: 2012 through 2014

Assessment

Change in number of district students	Small school adjustment
Spending exceeded operating/capital budgets	No overspending
Spending increase election results	No election held
Operating reserve percentage (max. 4%), trend	4.0%, Steady
Years of capital reserve held	More than 3 years
Current financial and internal control status	Not assessed

Stress level



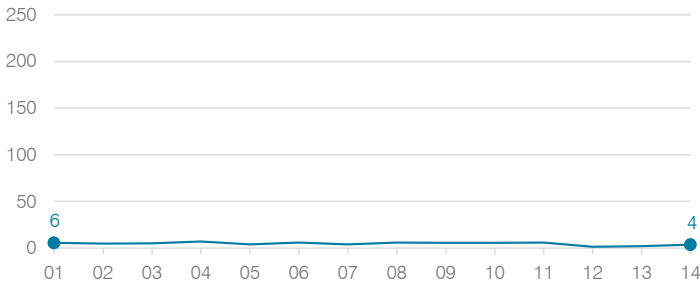
# Crown King Elementary School District

	2001	2002	2003	2004	2005	2006	2007	2008	2009	2010	2011	2012	2013	2014
Classroom dollar percentage:	63.9	66.5	64.7	63.9	67.0	71.2	65.6	68.0	68.3	68.7	69.0	64.4	54.6	60.9

## OPERATIONAL TRENDS

Fiscal years as indicated

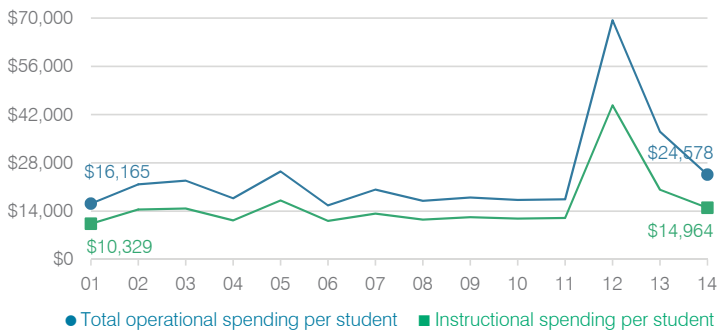
### Students attending



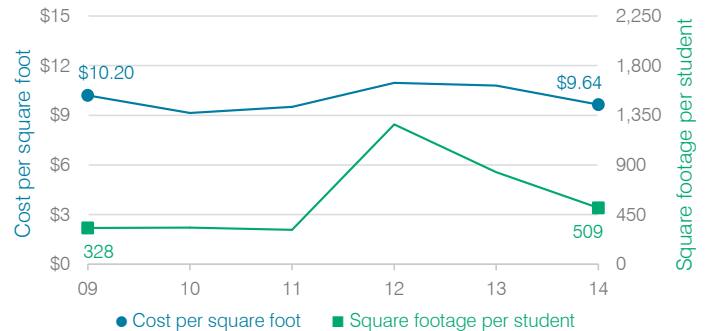
### Administrative cost per student



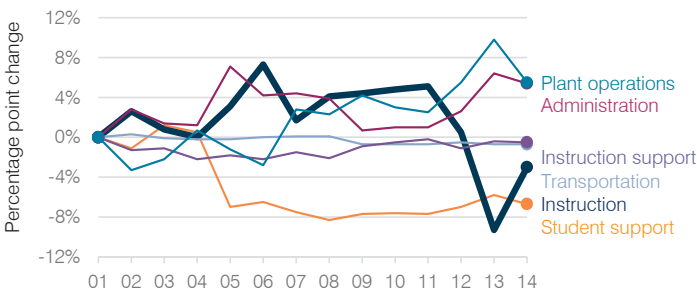
### Total operational and instructional spending per student



### Plant cost per square foot and square footage per student



### Changes in operational spending percentages



### Food service cost per meal

Food service cost per meal trend is not shown because the District did not operate a food service program during all or a substantial portion of fiscal years 2009 through 2014.

### Average teacher salary

Average teacher salary trend is not shown because the District had two or fewer teachers during all or a substantial portion of fiscal years 2010 through 2014.

### Transportation costs per mile and per rider

Transportation costs per mile and per rider trends are not shown because the District did not operate a transportation program during all or a substantial portion of fiscal years 2009 through 2014.