

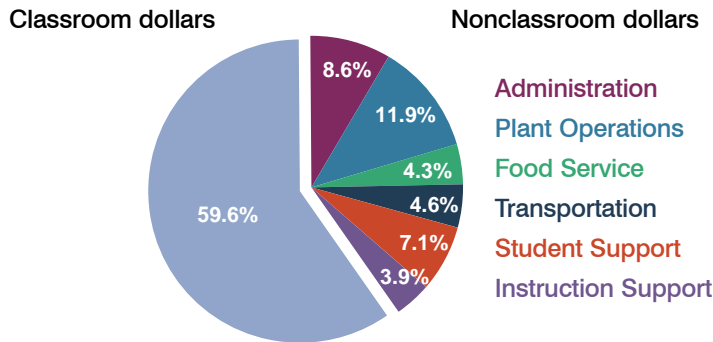
# Deer Valley Unified School District

Maricopa County  
Peer groups: Efficiency Group 1, Achievement Group 2  
Legislative district(s): 4, 6, 7 and 9

District size: Very Large  
Students attending: 33,814  
Number of schools: 37

## OPERATIONAL EFFICIENCY

### Spending by operational area

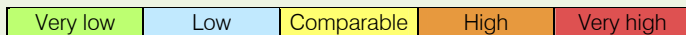


### 5-year trend

Total spending per pupil increased by 12 percent. Spending in the classroom remained fairly stable, but decreased overall from 61.2 to 59.6 percent. Spending on plant operations increased, while spending on other nonclassroom areas remained stable.

### District's cost measures relative to peer group

Operational Area	Measure	District	Peer Average	State Average
Administration	Cost per pupil	\$570	\$613	\$728
	Students per administrator	87	81	66
Plant Operations	Cost per square foot	\$6.06	\$6.03	\$6.10
	Square footage per student	131	142	152
Food Service	Cost per meal equivalent	\$2.26	\$2.42	\$2.45
Transportation	Cost per mile	\$3.89	\$3.96	\$3.39
	Miles per rider	286	279	283



### Per-pupil spending by operational area

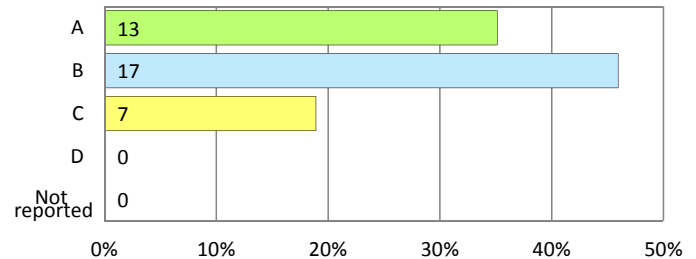
	District		Peer 2011	State 2011	National 2009
	2010	2011			
<b>Total</b>	<b>\$6,697</b>	<b>\$6,670</b>	<b>\$7,123</b>	<b>\$7,485</b>	<b>\$10,591</b>
<b>Classroom dollars</b>	<b>\$4,061</b>	<b>\$3,975</b>	<b>\$4,080</b>	<b>\$4,098</b>	<b>\$6,456</b>
<b>Nonclassroom dollars:</b>	<b>\$2,636</b>	<b>\$2,695</b>	<b>\$3,043</b>	<b>\$3,387</b>	<b>\$4,135</b>
Administration	597	570	613	728	1,147
Plant Operations	769	794	855	927	1,033
Food Service	287	290	317	375	404
Transportation	281	304	330	352	443
Student Support	461	475	556	571	573
Instruction Support	241	262	372	434	535

## STUDENT ACHIEVEMENT AND TEACHER INFORMATION

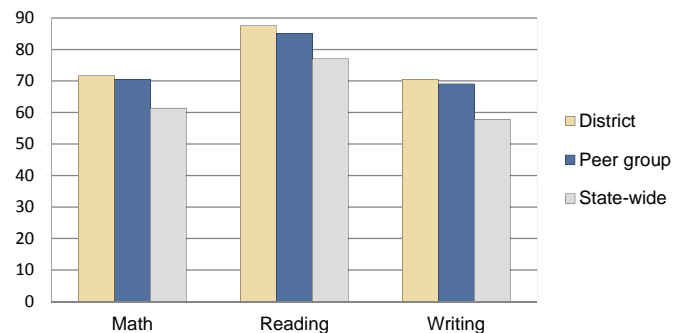
### District and school letter grades

District grade: **A**

### School grades (number and percentage):



### Percentage of students meeting state standards (AIMS)



### Student and teacher information

Measure	District	Peer Average	State Average
Attendance rate	95%	95%	95%
Graduation rate (2010)	89%	90%	78%
Poverty rate (2010)	12%	13%	22%
Students per teacher	18.8	18.2	18.1
Average teacher salary	\$45,368	\$46,027	\$45,637
Average years of experience	11.8	10.8	10.9
Percent of teachers in first 3 years	9%	16%	16%

### Proposition 301 pay, goals, and results

Average additional salary earned by teachers: \$2,832

Type of goal	Goal met?
Student achievement	■
Dropout/graduation rates	■
Student attendance	-
Parent/student satisfaction	-
Teacher attendance	-
Teacher professional development	■
Teacher evaluations	-
Tutoring	■
Other	■

■ = yes, □ = no, ▴ = partially, and - = no goal set