

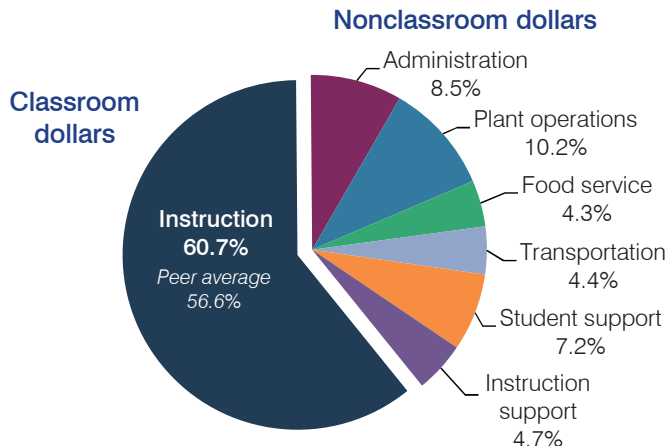
# Deer Valley Unified School District

Maricopa County  
 Efficiency peer groups 1 and T-4, Achievement peer group 2  
 Legislative district(s): 1, 15, 20, and 22

District size, location: Very large, Suburb  
 Students attending: 32,593  
 Number of schools: 37

## OPERATIONAL EFFICIENCY

### Spending by operational area



### Efficiency measures relative to peer averages

| Operational area | Measure                              | District | Peer average | State average |
|------------------|--------------------------------------|----------|--------------|---------------|
| Administration   | Cost per pupil                       | \$595    | \$641        | \$780         |
|                  | Students per administrative position | 87       | 81           | 67            |
| Plant operations | Cost per square foot                 | \$5.28   | \$5.93       | \$6.09        |
|                  | Square footage per student           | 136      | 144          | 153           |
| Food service     | Cost per meal equivalent             | \$2.49   | \$2.75       | \$2.79        |
| Transportation   | Cost per mile                        | \$4.42   | \$3.61       | \$3.66        |
|                  | Cost per rider                       | \$1,175  | \$1,124      | \$1,071       |

Very low   Low   Comparable   High   Very high

### Per pupil spending

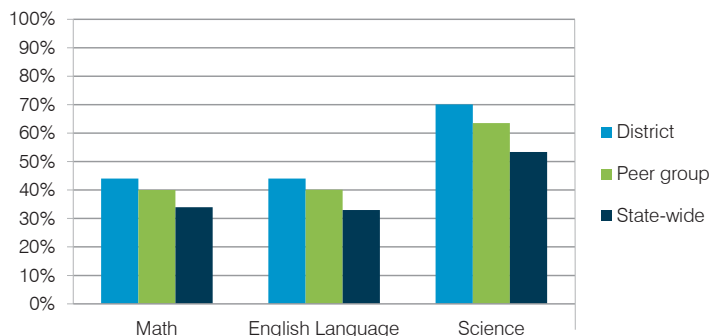
| Spending by area                | District        |                 | Peer average    | State average   |
|---------------------------------|-----------------|-----------------|-----------------|-----------------|
|                                 | 2014            | 2015            | 2015            | 2015            |
| Instruction                     | \$ 3,919        | \$ 4,268        | \$ 4,107        | \$ 4,105        |
| Administration                  | 609             | 595             | 641             | 780             |
| Plant operations                | 751             | 720             | 853             | 930             |
| Food service                    | 299             | 299             | 333             | 417             |
| Transportation                  | 335             | 313             | 343             | 371             |
| Student support                 | 479             | 506             | 618             | 613             |
| Instruction support             | 326             | 331             | 367             | 442             |
| <b>Total operational</b>        | <b>\$ 6,718</b> | <b>\$ 7,032</b> | <b>\$ 7,262</b> | <b>\$ 7,658</b> |
| Land and buildings              | \$ 740          | \$ 1,087        | \$ 551          | \$ 641          |
| Equipment                       | 194             | 355             | 316             | 383             |
| Interest                        | 176             | 171             | 266             | 225             |
| Other                           | 322             | 301             | 184             | 150             |
| <b>Total nonoperational</b>     | <b>\$ 1,432</b> | <b>\$ 1,914</b> | <b>\$ 1,317</b> | <b>\$ 1,399</b> |
| <b>Total per pupil spending</b> | <b>\$ 8,150</b> | <b>\$ 8,946</b> | <b>\$ 8,579</b> | <b>\$ 9,057</b> |

## STUDENT AND TEACHER MEASURES, FINANCIAL ASSESSMENT, AND REVENUE

### Student and teacher measures

| Measure                                 | District | Peer average | State average |
|---|----------|--------------|---------------|
| Attendance rate                         | 95%      | 95%          | 94%           |
| Graduation rate (2014)                  | 92%      | 88%          | 76%           |
| Poverty rate (2014)                     | 11%      | 14%          | 23%           |
| Students per teacher                    | 18.2     | 19.3         | 18.6          |
| Average teacher salary                  | \$44,928 | \$44,660     | \$46,008      |
| Average years of teacher experience     | 12.1     | 10.7         | 11.0          |
| Percentage of teachers in first 3 years | 14%      | 19%          | 20%           |

### Students who met state standards



### Financial stress assessment

Overall financial stress level: **Moderate**

| Measure: 2013 through 2015                    | Assessment       |
|---|------------------|
| Change in number of district students         | Steady           |
| Spending exceeded operating/capital budgets   | Capital only     |
| Spending increase election results            | Voter-approved   |
| Operating reserve percentage (max. 4%), trend | 1.1%, Decreasing |
| Years of capital reserve held                 | 1 to 3 years     |
| Current financial and internal control status | Compliant        |

Low   Moderate   High

### Per pupil revenues

| Revenues by source                              | District        |                 | Peer average    | State average   |
|---|-----------------|-----------------|-----------------|-----------------|
|   | 2014            | 2015            | 2015            | 2015            |
| Federal   | \$ 615          | \$ 622          | \$ 839          | \$ 1,299        |
| State   | 3,110           | 3,032           | 3,183           | 3,517           |
| Local   | 4,408           | 4,483           | 4,941           | 4,248           |
| <b>Total revenues per pupil</b>                 | <b>\$ 8,133</b> | <b>\$ 8,137</b> | <b>\$ 8,963</b> | <b>\$ 9,064</b> |
| <b>Select revenues from common sources</b>      |                 |                 |                 |                 |
| Equalization formula funding                    | \$ 5,280        | \$ 4,976        | \$ 5,221        | \$ 5,303        |
| Grants  | 630             | 641             | 854             | 1,167           |
| Donations and tax credits                       | 51              | 61              | 83              | 78              |
| <b>Select revenues from less common sources</b> |                 |                 |                 |                 |
| Desegregation                                   | \$ 0            | \$ 0            | 4 of 10         |                 |
| Small school adjustment                         | 0               | 0               | 0 of 10         |                 |
| Federal impact aid                              | 0               | 0               | 2 of 10         |                 |
| Voter-approved levy increases                   | 1,463           | 1,394           | 10 of 10        |                 |

# Deer Valley USD—page 2

## Classroom dollar percentage

| Year:       | 2001 | 2002 | 2003 | 2004 | 2005 | 2006 | 2007 | 2008 | 2009 | 2010 | 2011 | 2012 | 2013 | 2014 | 2015 |
|-------------|------|------|------|------|------|------|------|------|------|------|------|------|------|------|------|
| Percentage: | 60.1 | 62.2 | 61.6 | 62.8 | 61.9 | 61.2 | 60.5 | 61.5 | 60.6 | 60.6 | 59.6 | 58.9 | 58.6 | 58.3 | 60.7 |

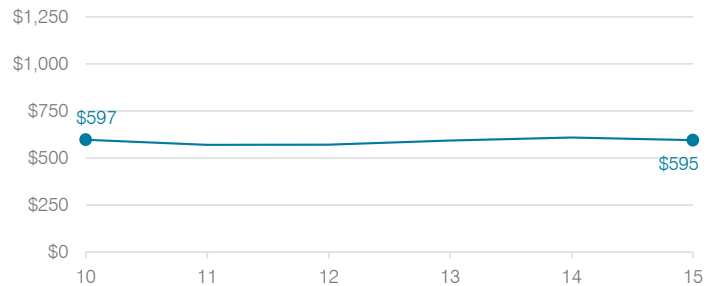
## OPERATIONAL TRENDS

Fiscal years as indicated

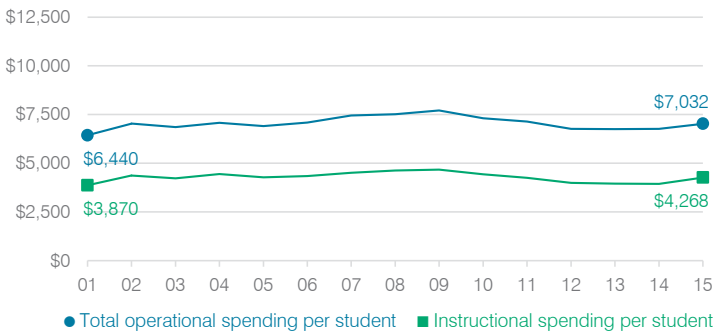
### 5-year spending trend (2010 through 2015)

Total operational spending per pupil, adjusted for inflation, decreased by 4 percent. The percentage of dollars spent in the classroom varied year to year, increasing slightly overall from 60.6 to 60.7 percent. As a percentage of total operational spending, plant operations decreased, while instruction support increased. Most other nonclassroom areas remained stable.

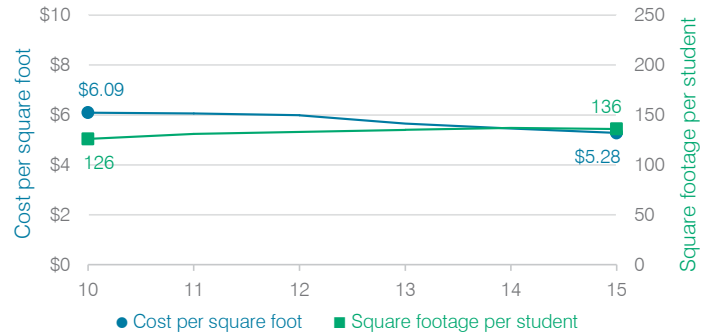
### Administrative cost per student



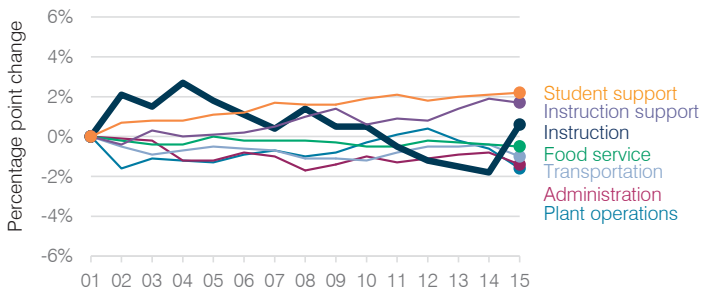
### Total operational and instructional spending per student (inflation adjusted to 2015 dollars)



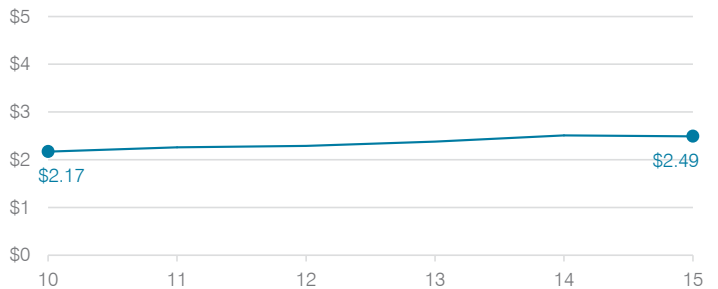
### Plant cost per square foot and square footage per student



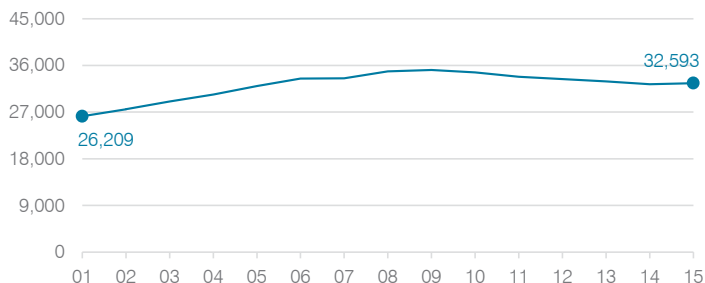
### Changes in operational spending percentages



### Food service cost per meal



### Students attending



### Transportation costs per mile and per rider

