

Deer Valley Unified School District

Maricopa County
 Operational peer group: A
 Legislative districts: 4, 6, 7, 9

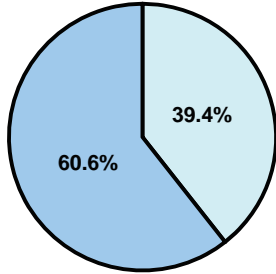
District size: Very Large
 Students attending: 35,127
 Number of schools: 37

OPERATIONAL EFFICIENCY

Average per-pupil spending

District
 State

Classroom
\$4,239
 \$4,497



Nonclassroom
\$2,755
 \$3,411

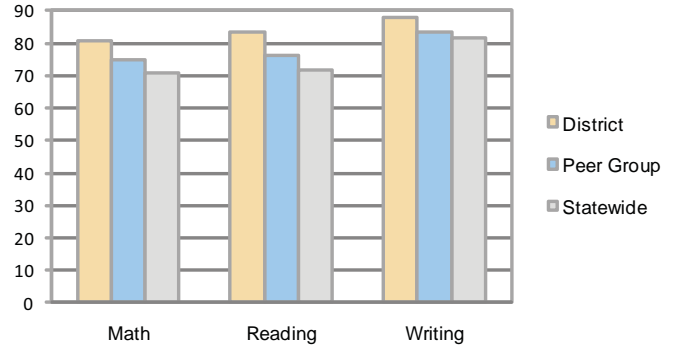
Total
\$6,994
 \$7,908

5-year trend

Total spending per pupil increased by 26 percent. Spending in the classroom varied year to year and decreased significantly overall from 62.8 to 60.6 percent. Spending on student and instruction support increased, while spending in other nonclassroom areas remained stable.

STUDENT ACHIEVEMENT AND TEACHER INFORMATION

Percentage of students meeting state standards (AIMS)



Adequate Yearly Progress (AYP) toward federal goals

34 schools met all applicable AYP objectives for NCLB. 3 did not because some students did not demonstrate sufficient academic progress.

Student and teacher information

Measure	District	Peer average	State average
Attendance rate	95%	96%	95%
Graduation rate (2008)	88%	86%	75%
Poverty rate	10%	14%	19%
Student/teacher ratio	18.2	17.5	17.1
Average teacher salary	\$48,505	\$50,748	\$45,209
Average years' experience	10.2	10.5	8.3
Percent of teachers in first 3 years	19%	20%	16%

District's cost measures relative to peer group

Operational Area	Measure	District	Peer Average	State Average
Administration	Cost per pupil	\$593	\$639	\$729
	Students per administrator	86	77	66
Plant Operations	Cost per square foot	\$6.17	\$6.38	\$6.40
	Square footage per student	125	138	144
Food Service	Cost per meal equivalent	\$2.34	\$2.49	\$2.53
Transportation	Cost per mile	\$4.03	\$4.22	\$3.36
	Miles per rider	252	298	271

Very Low Low Comparable High Very High

Proposition 301

Teacher pay

On average, each teacher, librarian, speech pathologist, counselor, nurse, intervention specialist, and therapist earned between \$5,200 and \$5,785 in additional salary.

Performance pay plan goals and results

Type of goal	Goal met?
Student achievement	■
Dropout/ graduation rates	■
Student attendance	■
Parent/student satisfaction	■
Teacher attendance	■
Teacher professional development	■
Teacher evaluations	■
Tutoring	■
Other	■

■ = yes, □ = no, and ▮ = partially

Per-pupil spending by function

	District		Peer	State	National
	2008	2009	2009	2009	2007
Total	\$6,722	\$6,994	\$7,781	\$7,908	\$9,683
Classroom dollars	\$4,135	\$4,239	\$4,577	\$4,497	\$5,903
Nonclassroom dollars:	\$2,587	\$2,755	\$3,204	\$3,411	\$3,780
Administration	549	593	639	729	1,050
Plant Operations	725	770	881	920	951
Food Service	310	315	322	382	369
Transportation	291	304	330	343	406
Student Support	445	465	616	594	512
Instruction Support	242	265	398	431	470
Other	25	43	18	12	22