

# Classroom Dollars and Proposition 301 Results

## Double Adobe Elementary School District

Cochise County

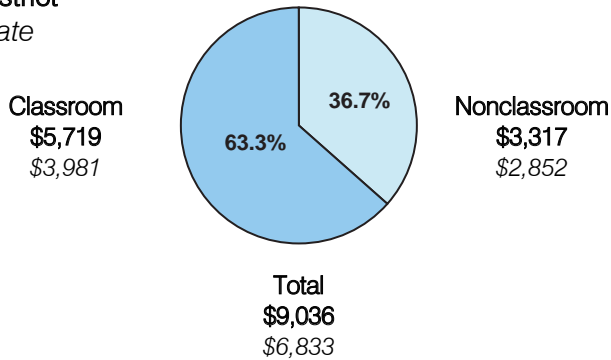
District size: Very Small  
 Students attending: 50  
 Number of schools: 1  
 Number of certified teachers: 4

### Classroom Dollars

Fiscal year 2006 averages per pupil

District

State

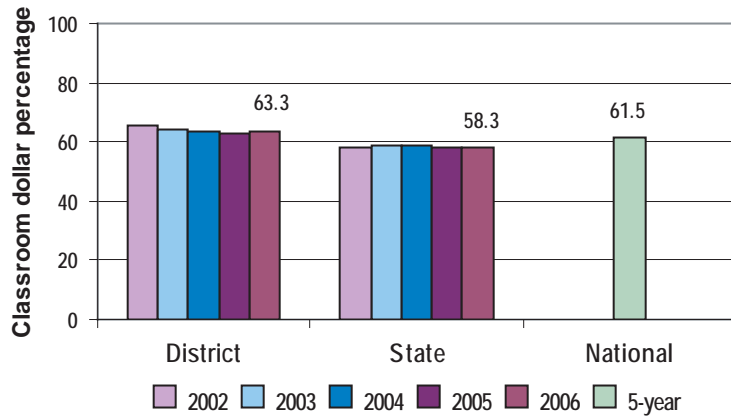


### Comparative Information

	District			State
	2004	2005	2006	2006
Student/teacher ratio	13.2	12.2	12.6	17.7
Average teacher salary	\$36,490	\$41,230	\$42,224	\$42,967
Average years' experience	14.1	13.8	14.5	8.3

Classroom dollar ranking: 14 of 229 districts.

### 5-year comparison



### Expenditures by function

	District					State	National
	2002	2003	2004	2005	2006	2006	5-year
Classroom dollars	65.4	64.1	63.5	62.9	63.3	58.3	61.5
Nonclassroom dollars:							
Administration	14.0	13.0	13.1	11.8	13.1	9.4	11.0
Plant operations	9.1	9.0	10.8	14.7	14.8	11.2	9.6
Food service						4.7	3.9
Transportation	4.1	4.3	3.6	4.1	3.7	4.2	4.0
Student support	6.0	8.7	7.3	4.5	4.5	7.2	5.1
Instruction support	1.4	0.9	1.7	2.0	0.6	4.8	4.7
Other						0.2	0.2

### Proposition 301

#### District-reported 2006 results

##### Teacher pay

- On average, each teacher earned an additional \$5,324 in salary.

##### Performance

- The District accomplished its goals, which were the same as the prior fiscal year's goals and were based on district performance.
- All students demonstrated 1 year's academic progress.
- Teachers completed 20 hours of professional development activities.
- Other goals were linked to attendance at a school open house and family night activities, and parent participation in a survey and parent-teacher conferences.

##### Menu

- Monies were used primarily to increase teacher compensation.
- The teachers earned \$227 each for completing 15 hours of professional development activities in math, reading, and technology.