

# Classroom Dollars and Proposition 301 Results

## Double Adobe Elementary School District

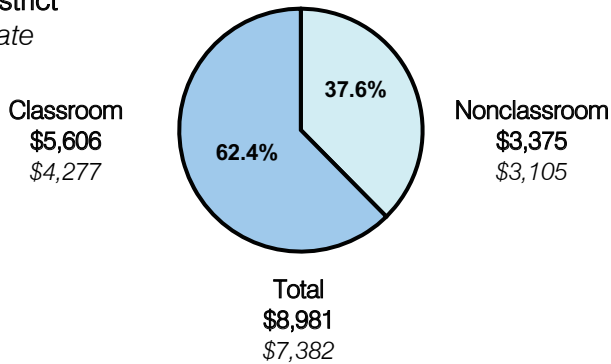
Cochise County

District size: Very Small  
 Students attending: 51  
 Number of schools: 1  
 Number of certified teachers: 4

### Classroom Dollars

Fiscal year 2007 averages per pupil

District  
 State

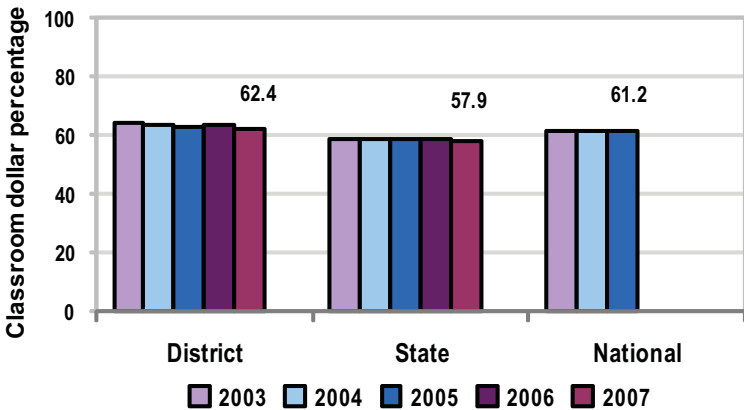


### Comparative Information

	District			State
	2005	2006	2007	2007
Student/teacher ratio	12.2	12.6	12.6	17.4
Average teacher salary	\$41,230	\$37,045	\$40,429	\$43,833
Average years' experience	13.8	14.5	15.0	8.1

Classroom dollar ranking: 17 of 229 districts.

### 5-year comparison



### Expenditures by function

	District					State	National
	2003	2004	2005	2006	2007	2007	2005
Classroom dollars	64.1	63.5	62.9	63.3	62.4	57.9	61.2
Nonclassroom dollars:							
Administration	13.0	13.1	11.8	13.1	14.0	9.5	11.0
Plant operations	9.0	10.8	14.7	14.8	15.1	11.3	9.6
Food service						4.7	3.9
Transportation	4.3	3.6	4.1	3.7	3.6	4.3	4.1
Student support	8.7	7.3	4.5	4.5	4.2	7.3	5.2
Instruction support	0.9	1.7	2.0	0.6	0.7	4.8	4.8
Other						0.2	0.2

### Proposition 301

#### District-reported 2007 results

##### Teacher pay

- On average, each teacher earned an additional \$4,010 in salary.

##### Performance

- The District accomplished its goals, which were similar to the prior fiscal year's goals and were based on district performance.
- At least 80 percent of students in attendance since the beginning of the school year met or exceeded state standards on standardized tests.
- Teachers completed 20 hours of professional development activities.
- At least 75 percent of families attended school open houses and family night activities.
- At least 75 percent of the parents and students randomly surveyed rated the school's overall performance as "good" or "excellent."

##### Menu

- Monies were used primarily to increase teacher compensation.
- Teachers earned an additional \$600 each for completing 15 hours of professional development activities in math, reading, and technology.