

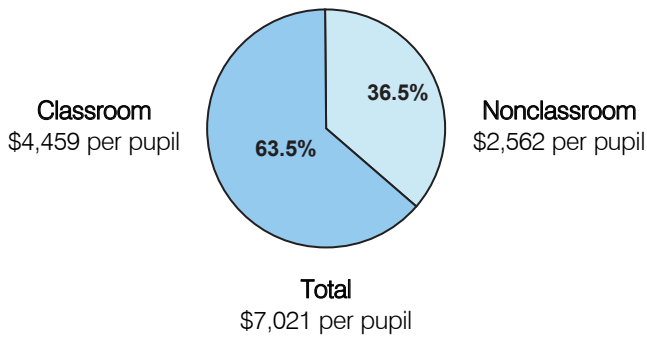
# Classroom Dollars and Proposition 301 Results

## Double Adobe Elementary School District

District size: Very Small  
 Students attending: 53  
 Number of schools: 1  
 Number of certified teachers: 4

### Classroom Dollars

Fiscal year 2004

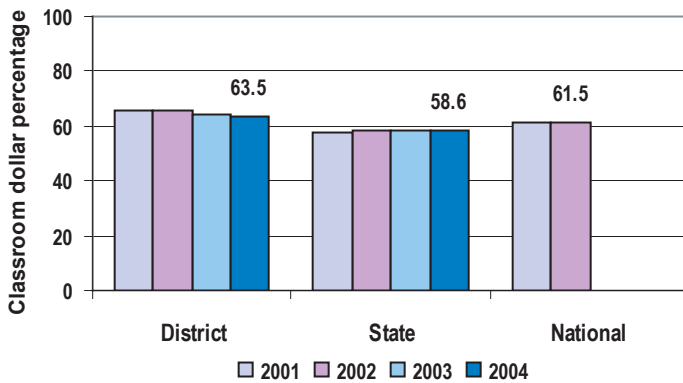


### Comparative Information

	District			State
	2002	2003	2004	2004
Student/teacher ratio	15.8	13.5	13.2	18.2
Average teacher salary	\$38,919	NA	\$36,490	\$38,534
Average years' experience	13.0	13.5	14.1	8.7

Classroom dollar ranking: 16 of 227 districts.

### 4-year comparison



### Expenditures by function

	Percentage					
	District				State	National
	2001	2002	2003	2004	2004	2001
Classroom dollars	66.0	65.4	64.1	63.5	58.6	61.5
Nonclassroom dollars:						
Administration	13.7	14.0	13.0	13.1	9.5	10.9
Plant operations	9.4	9.1	9.0	10.8	11.7	9.7
Food service					4.7	4.0
Transportation	3.6	4.1	4.3	3.6	4.0	4.1
Student support	5.6	6.0	8.7	7.3	7.0	5.0
Instruction support	1.7	1.4	0.9	1.7	4.3	4.6
Other					0.2	0.2

### Proposition 301

#### District-reported 2004 results

##### Teacher pay

- On average, each teacher earned an additional \$3,415 in salary.

##### Performance

- The District accomplished its goals, which were based on district and individual performance.
- At least 80 percent of students demonstrated 1 year's academic progress.
- Most teachers completed 20 hours of professional development activities.
- Other goals were linked to attendance at a school open house and family night activities, and parent participation in a survey and parent-teacher conferences.
- 100 percent of parents and students surveyed indicated they were satisfied with the school.

##### Menu

- Teachers were compensated for participating in AIMS intervention activities, which the District indicates resulted in changes in students' test scores.