

Double Adobe Elementary School District

Cochise County

Efficiency peer groups 11 and T-11, Achievement peer group 18

Legislative district(s): 14

District size, location:

Very small, Rural

Students attending:

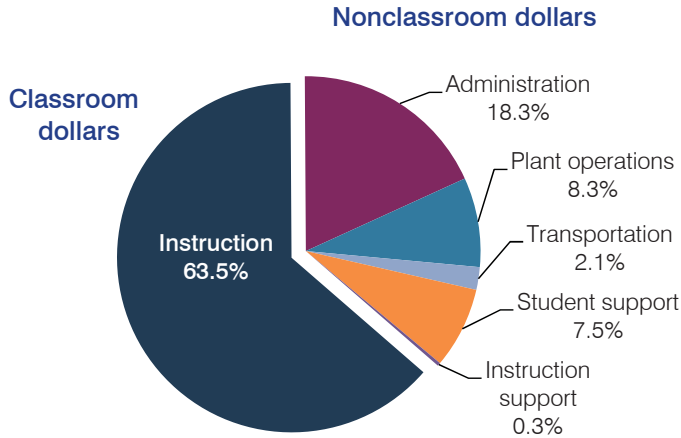
40

Number of schools:

1

OPERATIONAL EFFICIENCY

Spending by operational area



5-year spending trend (2009 through 2014)

Student enrollment decreased by 28 percent, which contributed to the 24 percent increase in total spending per pupil. Spending in the classroom varied year to year, increasing overall from 61.3 to 63.5 percent. Spending on all nonclassroom areas also varied year to year, as is common for very small districts.

Cost measures relative to peer averages

| Operational area | Measure | District | Peer average | State average |
|------------------|----------------------------|----------|--------------|---------------|
| Administration | Cost per pupil | \$2,193 | \$2,835 | \$757 |
| | Students per administrator | 23 | 28 | 68 |
| Plant operations | Cost per square foot | \$4.54 | \$6.51 | \$6.04 |
| | Square footage per student | 219 | 351 | 153 |
| Food service | Cost per meal equivalent | N/A | \$5.02 | \$2.69 |
| Transportation | Cost per mile | \$0.44 | \$1.61 | \$3.62 |
| | Cost per rider | \$195 | \$1,444 | \$1,036 |

Per pupil spending by operational area

| | District | | Peer average | State average | National average |
|------------------------------|-----------------|-----------------|-----------------|----------------|------------------|
| | 2013 | 2014 | 2014 | 2014 | 2012 |
| Total | \$10,735 | \$11,987 | \$16,101 | \$7,578 | \$10,667 |
| Classroom dollars | 7,471 | 7,613 | 8,231 | 4,073 | 6,495 |
| Nonclassroom dollars: | 3,264 | 4,374 | 7,870 | 3,505 | 4,172 |
| Administration | 1,185 | 2,193 | 2,835 | 757 | 1,160 |
| Plant operations | 1,677 | 993 | 2,137 | 923 | 1,008 |
| Food service | 0 | 0 | 901 | 405 | 429 |
| Transportation | 252 | 248 | 1,072 | 373 | 464 |
| Student support | 121 | 902 | 536 | 600 | 594 |
| Instruction support | 29 | 38 | 389 | 447 | 517 |

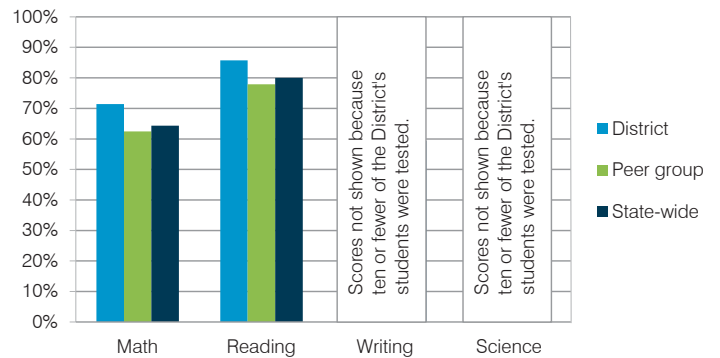
STUDENT ACHIEVEMENT, TEACHER MEASURES, AND FINANCIAL ASSESSMENT

ADE-reported district and school letter grades

District grade: **A**

| Grade | Number of schools | Percentage of schools |
|-----------|-------------------|-----------------------|
| A | 1 | 100% |
| B | 0 | 0% |
| C | 0 | 0% |
| D | 0 | 0% |
| F | 0 | 0% |
| Not rated | 0 | 0% |

Students who met state standards (AIMS)



Student and teacher measures

| Measure | District | Peer average | State average |
|-----------------------------------------|----------|--------------|---------------|
| Attendance rate | 96% | 95% | 95% |
| Graduation rate (2013) | N/A | N/A | N/A |
| Poverty rate (2013) | 24% | 25% | 24% |
| Students per teacher | 10.0 | 13.1 | 18.6 |
| Average teacher salary | \$45,756 | \$45,915 | \$46,026 |
| Amount from Proposition 301 | \$3,087 | \$3,467 | \$4,810 |
| Average years of teacher experience | 18.0 | 12.1 | 10.9 |
| Percentage of teachers in first 3 years | 0% | 13% | 20% |

Financial stress assessment

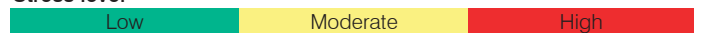
Overall financial stress level: **Low**

Measure: 2012 through 2014

Assessment

| | |
|-----------------------------------------------|-------------------------|
| Change in number of district students | Small school adjustment |
| Spending exceeded operating/capital budgets | No overspending |
| Spending increase election results | No election held |
| Operating reserve percentage (max. 4%), trend | 4.0%, Steady |
| Years of capital reserve held | More than 3 years |
| Current financial and internal control status | Not assessed |

Stress level



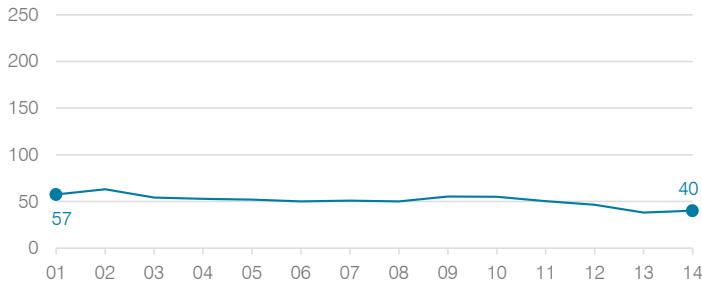
Double Adobe Elementary School District

| | 2001 | 2002 | 2003 | 2004 | 2005 | 2006 | 2007 | 2008 | 2009 | 2010 | 2011 | 2012 | 2013 | 2014 |
|------------------------------|------|------|------|------|------|------|------|------|------|------|------|------|------|------|
| Classroom dollar percentage: | 66.0 | 65.4 | 64.1 | 63.5 | 62.9 | 63.3 | 62.4 | 61.6 | 61.3 | 64.3 | 65.0 | 61.5 | 69.6 | 63.5 |

OPERATIONAL TRENDS

Fiscal years as indicated

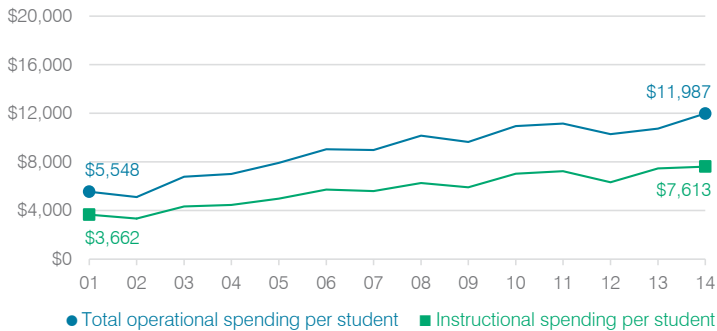
Students attending



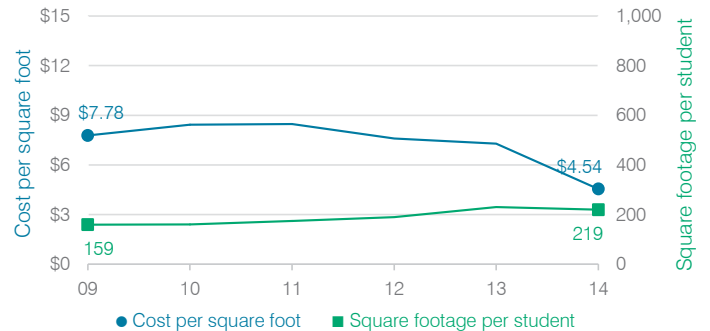
Administrative cost per student



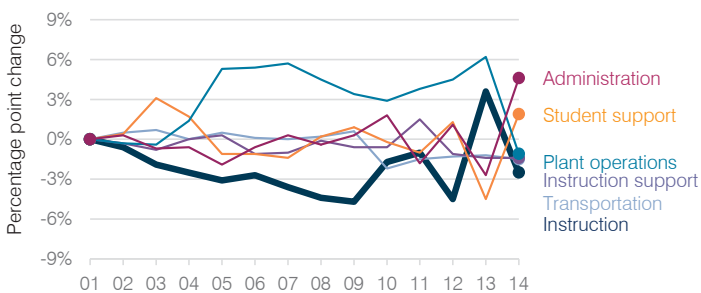
Total operational and instructional spending per student



Plant cost per square foot and square footage per student



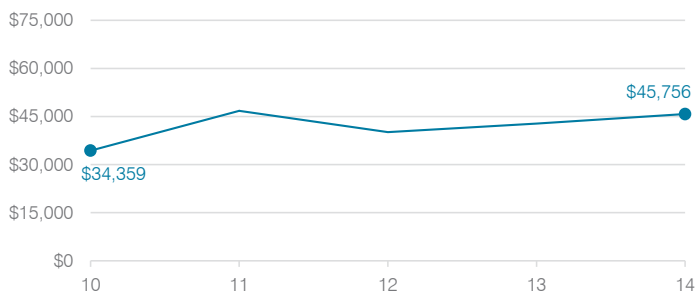
Changes in operational spending percentages



Food service cost per meal

Food service cost per meal trend is not shown because the District did not operate a food service program during all or a substantial portion of fiscal years 2009 through 2014.

Average teacher salary



Transportation costs per mile and per rider

