

# Douglas Unified School District

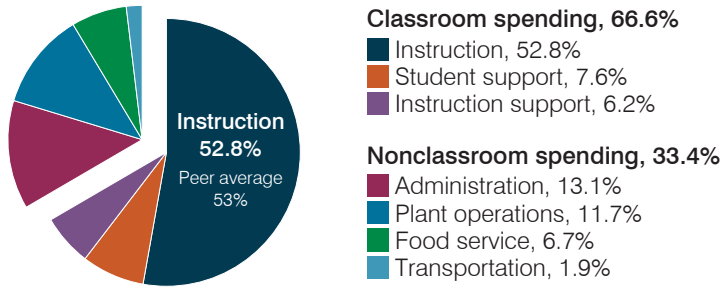
Cochise County  
 Peer groups: Operational 4 and T-10, Achievement 7<sup>1</sup>  
 Legislative district(s): 14  
 District location: Town  
 Number of schools: 8  
 Graduation rate (2018): 91%

Students attending; Size: 4,006; Medium-large  
 5-year change in students attending: 11% increase  
 Special education population: 6%  
 English learner population: 19%  
 Poverty rate (2018): 34%  
 Free/reduced meal eligibility: 84%

## Instructional spending percentage by year

2001	2002	2003	2004	2005	2006	2007	2008	2009	2010	2011	2012	2013	2014	2015	2016	2017	2018	2019
62.2	63.6	61.0	63.6	60.0	58.8	59.5	58.2	54.9	53.2	53.8	52.3	52.4	50.7	49.6	50.5	49.8	51.1	52.8

## Spending by operational area



## Operational measures relative to peer averages

Operational area	Measure	District	Peer average	State average
Administration	Cost per pupil	\$1,006	\$899	\$903
	Students per administrative position	77	68	66
Plant operations	Cost per square foot	\$6.34	\$5.82	\$6.49
	Square footage per student	141	180	158
Food service	Cost per meal	\$3.29	\$3.28	\$3.08
Transportation	Cost per mile	\$3.63	\$2.20	\$4.29
	Cost per rider	\$3,059	\$1,962	\$1,424



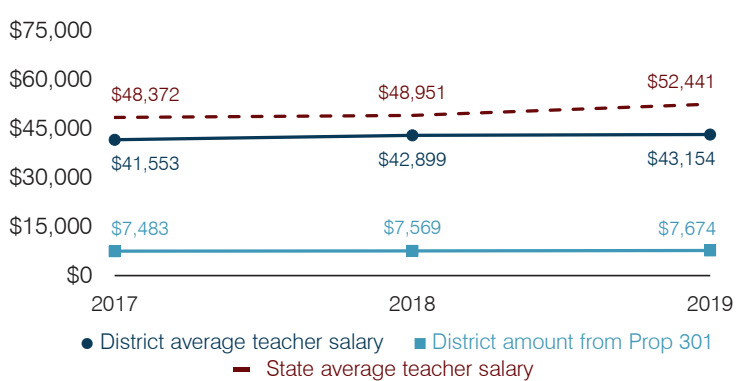
## Per pupil spending

Spending by area	District		Peer average 2019	State average 2019
	2018	2019		
Instruction	\$ 3,637	\$ 4,039	\$ 4,516	\$ 4,869
Student support	575	583	713	754
Instruction support	492	473	496	497
Administration	939	1,006	899	903
Plant operations	859	895	1,029	1,027
Food service	480	514	438	438
Transportation	135	142	444	417
<b>Total operational</b>	<b>7,117</b>	<b>7,652</b>	<b>8,535</b>	<b>8,905</b>
Land and buildings	173	56	565	1,086
Equipment	255	395	453	496
Interest	76	66	173	261
Other	8	10	70	180
<b>Total nonoperational</b>	<b>512</b>	<b>527</b>	<b>1,261</b>	<b>2,023</b>
<b>Total per pupil spending</b>	<b>\$ 7,629</b>	<b>\$ 8,179</b>	<b>\$ 9,796</b>	<b>\$ 10,928</b>

## Percentage point change in spending by operational area (fiscal year 2014 versus 2019)

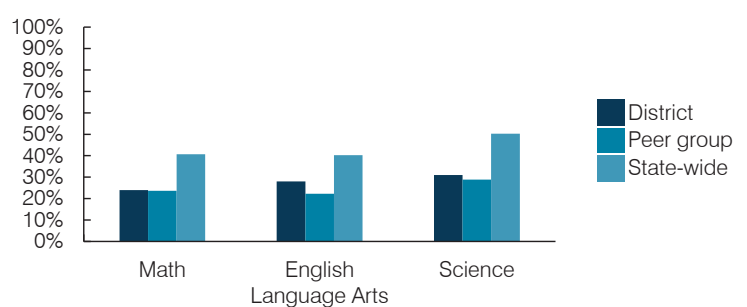


## Average teacher salary and other measures



Measure	2017	2018	2019
Students per teacher	20.5	21.4	19.5
Average years of teacher experience	11.7	11.1	11.8
Percentage of teachers in first 3 years	16%	16%	13%

## Students who passed State assessments<sup>2</sup>



<sup>1</sup> See Appendix A for information, such as districts included in each peer group, and Appendix B for sources and methodology.  
<sup>2</sup> School letter grades are available at <https://azreportcards.azed.gov>.