

Douglas Unified School District

Cochise County

Efficiency peer groups 4 and T-10, Achievement peer group 8

Legislative district(s): 14

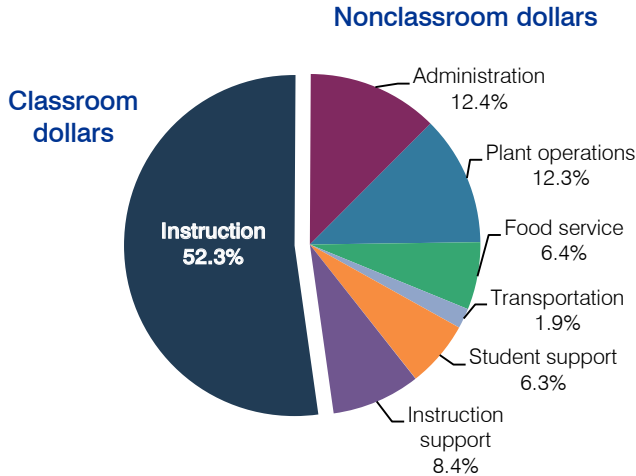
District size / location: Medium-Large, Town

Students attending: 3,957

Number of schools: 8

OPERATIONAL EFFICIENCY

Spending by operational area



5-year spending trend

Total spending per pupil decreased by 5 percent. Spending in the classroom decreased from 59.5 to 52.3 percent. Overall, spending on food service increased and spending on instruction support increased substantially. Spending on other nonclassroom areas varied year to year.

Cost measures relative to peer averages

Operational area	Measure	District	Peer average	State average
Administration	Cost per pupil	\$828	\$748	\$736
	Students per administrator	54	66	66
Plant operations	Cost per square foot	\$5.72	\$5.53	\$6.09
	Square footage per student	144	173	152
Food service	Cost per meal equivalent	\$2.52	\$2.56	\$2.47
Transportation	Cost per mile	\$4.19	\$2.26	\$3.50
	Cost per rider	\$1,520	\$935	\$982

Very low Low Comparable High Very high

Per-pupil spending by operational area

	District		Peer average	State average	National average
	2011	2012	2012	2012	2010
Total	\$6,685	\$6,691	\$7,007	\$7,475	\$10,652
Classroom dollars	3,599	3,498	3,682	4,053	6,526
Nonclassroom dollars:	3,086	3,193	3,325	3,422	4,126
Administration	845	828	748	736	1,139
Plant operations	811	822	933	928	1,012
Food service	394	430	354	382	405
Transportation	131	125	369	362	443
Student support	403	422	540	578	592
Instruction support	502	566	381	436	535

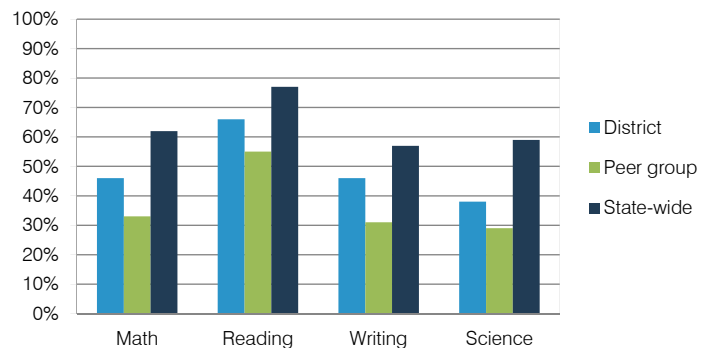
STUDENT ACHIEVEMENT, TEACHER MEASURES, AND FINANCIAL ASSESSMENT

ADE-reported district and school letter grades

District grade: **C**

Grade	Number of schools	Percentage of schools
A	0	0%
B	1	13%
C	5	63%
D	1	13%
F	1	13%
Not rated	0	0%

Percentage of students who met state standards (AIMS)



Student and teacher measures

Measure	District	Peer average	State average
Attendance rate	94%	92%	94%
Graduation rate (2011)	84%	69%	78%
Poverty rate (2011)	47%	49%	25%
Students per teacher	19.2	14.8	18.1
Average teacher salary	\$34,677	\$42,031	\$45,193
Amount from Proposition 301	\$5,034	\$3,203	\$3,195
Average years of teacher experience	11.8	11.5	11.0
Percentage of teachers in first 3 years	21%	19%	16%

Financial stress assessment

Overall financial stress level: **Moderate**

Measure: 2010 through 2012

Measure	Assessment
Number of students attending	Steady
Spending exceeded operating/capital budgets	No overspending
Spending increase election results	Voter-rejected
Operating reserve percentage (max. 4%), trend	2.6%, Varying
Years of capital reserve held	1 to 3 years
Current financial and internal control status	Compliant

Stress level

