

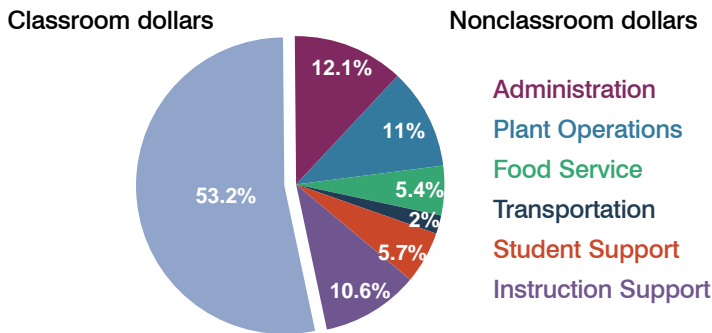
Douglas Unified School District

Cochise County
Peer groups: Efficiency 4, Achievement 21
Legislative district(s): 25

District size: Medium-Large
Students attending: 4,059
Number of schools: 9

OPERATIONAL EFFICIENCY

Spending by function

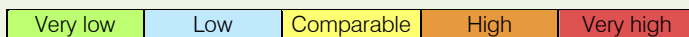


5-year trend

Total spending per pupil increased by 27 percent. Spending in the classroom varied year to year, decreasing significantly overall from 60 to 53.2 percent. Spending on instruction support increased significantly and spending on plant operations decreased significantly. Spending in other nonclassroom areas remained fairly stable.

District's cost measures relative to peer group

Operational Area	Measure	District	Peer Average	State Average
Administration	Cost per pupil	\$898	\$778	\$721
	Students per administrator	59	65	66
Plant Operations	Cost per square foot	\$5.63	\$5.81	\$6.25
	Square footage per student	145	171	146
Food Service	Cost per meal equivalent	\$2.36	\$2.53	\$2.41
Transportation	Cost per mile	\$6.71	\$2.94	\$3.35
	Miles per rider	204	297	282

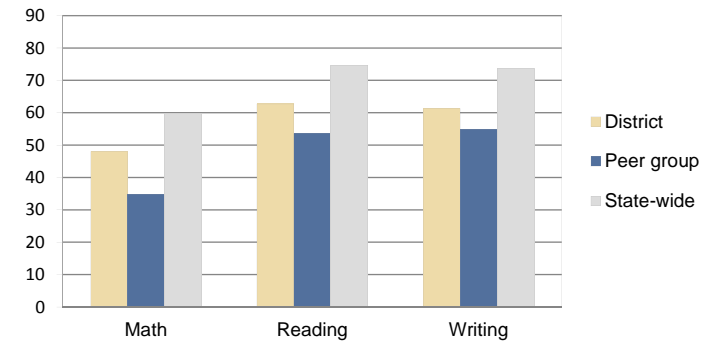


Per-pupil spending by function

	District		Peer 2010	State 2010	National 2008
	2009	2010			
Total	\$6,881	\$7,407	\$7,503	\$7,609	\$10,297
Classroom dollars	\$3,776	\$3,937	\$4,066	\$4,253	\$6,262
Nonclassroom dollars:	\$3,105	\$3,470	\$3,437	\$3,356	\$4,035
Administration	878	898	778	721	1,109
Plant Operations	894	817	973	914	1,003
Food Service	389	400	356	366	390
Transportation	134	149	356	342	438
Student Support	486	425	569	581	556
Instruction Support	324	781	405	432	539

STUDENT ACHIEVEMENT AND TEACHER INFORMATION

Percentage of students meeting state standards (AIMS)



Adequate Yearly Progress (AYP) toward federal goals

6 schools met all applicable AYP objectives for NCLB. 2 did not because some students did not demonstrate sufficient academic progress. 1 school was not eligible for AYP determination.

Student and teacher information

Measure	District	Peer Average	State Average
Attendance rate	93%	91%	94%
Graduation rate (2009)	88%	63%	76%
Poverty rate (2009)	39%	42%	21%
Student/teacher ratio	19.5	14.7	17.9
Average teacher salary	\$40,084	\$42,282	\$47,077
Average years' experience	11.3	12.3	10.6
Percent of teachers in first 3 years	20%	15%	20%

Proposition 301

Teacher and other staff pay

On average, each teacher earned \$3,826 in additional pay, and each librarian, audiologist, counselor, and psychologist earned between \$1,342 and \$3,924.

Performance pay plan goals and results

Type of goal	Goal met?
Student achievement	■
Dropout/graduation rates	■
Student attendance	■
Parent/student satisfaction	■
Teacher attendance	-
Teacher professional development	-
Teacher evaluations	-
Tutoring	-
Other	-

■ = yes, □ = no, ▴ = partially, and - = no goal set