

Classroom Dollars and Proposition 301 Results

Douglas Unified School District

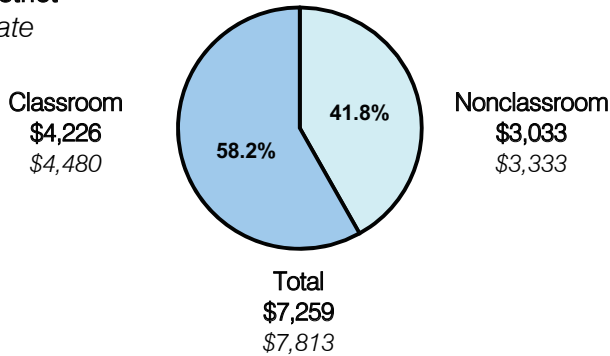
Cochise County

District size: Medium
 Students attending: 3,969
 Number of schools: 9
 Number of certified teachers: 206

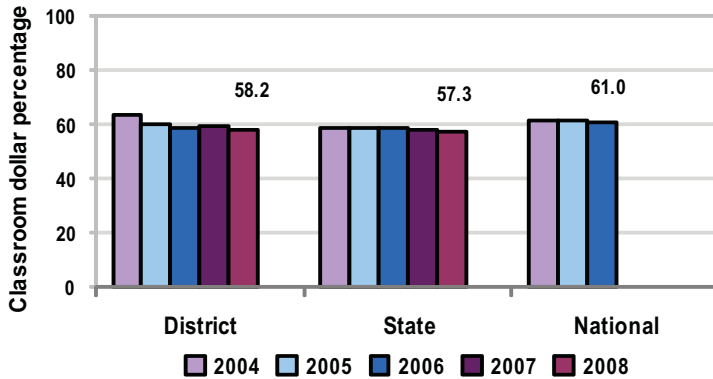
Classroom Dollars

Fiscal year 2008 averages per pupil

District
 State



5-year comparison



Expenditures by function

	Percentage					State 2008	National 2006
	District						
	2004	2005	2006	2007	2008		
Classroom dollars	63.6	60.0	58.8	59.5	58.2	57.3	61.0
Nonclassroom dollars:							
Administration	10.6	11.8	12.4	11.6	12.8	9.2	10.8
Plant operations	11.7	13.1	12.3	12.6	12.1	11.3	9.9
Food service	5.7	4.6	4.9	5.3	5.6	4.8	3.8
Transportation	1.3	1.1	1.3	1.6	1.7	4.4	4.2
Student support	6.1	7.1	7.0	6.4	6.2	7.4	5.2
Instruction support	1.0	2.3	3.3	3.0	3.4	5.4	4.9
Other						0.2	0.2

Comparative Information

	District			State
	2006	2007	2008	2008
Student/teacher ratio	22.2	20.4	19.1	17.3
Average teacher salary	\$43,700	\$46,734	\$42,927	\$44,967
Average years' experience	10.0	9.6	8.9	8.1

Classroom dollar ranking: 61 of 230 districts.

Proposition 301

District-reported 2008 results

Teacher pay

- On average, each teacher, librarian, and counselor earned \$7,207.

Performance

- The District achieved most of its goals, which were the same as the prior fiscal year's goals and were based on district, school, and individual performance.
- Each teacher chose an area for improvement from the District's school improvement plan and performed activities to support that area.
- Teachers provided measures of progress toward the academic standards by administering quarterly benchmark assessments.
- Student attendance rates were improved by encouraging a safe, positive classroom environment, following district student attendance policies and guidelines, and implementing an attendance incentive program.
- Other goals were linked to parent-student satisfaction, graduation rates, and professional development.

Menu

- Monies were used solely to increase eligible employee compensation.