

Classroom Dollars and Proposition 301 Results

Elfrida Elementary School District

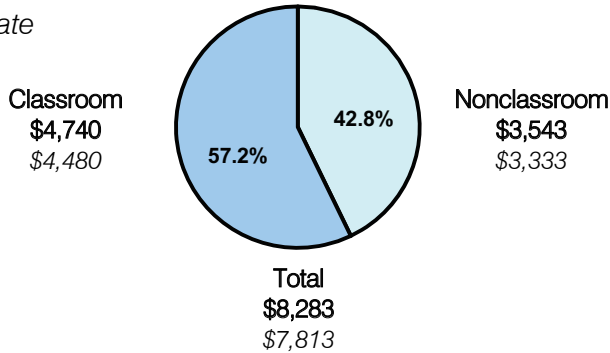
Cochise County

District size: Very Small
 Students attending: 161
 Number of schools: 1
 Number of certified teachers: 11

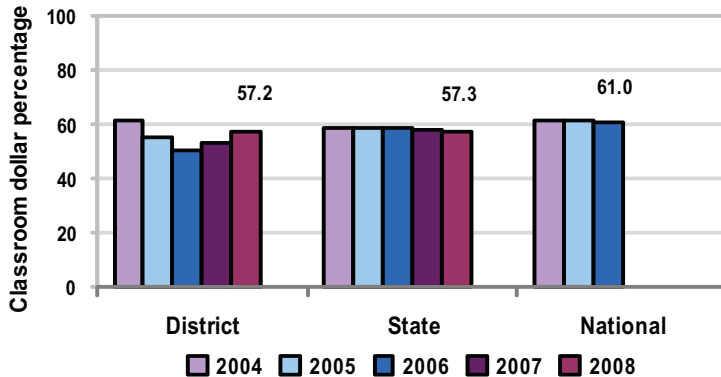
Classroom Dollars

Fiscal year 2008 averages per pupil

District
 State



5-year comparison



Expenditures by function

	Percentage					State 2008	National 2006
	District						
	2004	2005	2006	2007	2008		
Classroom dollars	61.2	55.4	50.1	53.0	57.2	57.3	61.0
Nonclassroom dollars:							
Administration	13.6	14.4	18.1	15.0	15.2	9.2	10.8
Plant operations	10.9	9.2	9.2	9.3	8.7	11.3	9.9
Food service	4.3	8.2	8.0	8.0	8.5	4.8	3.8
Transportation	3.9	4.3	4.5	4.5	4.5	4.4	4.2
Student support	5.9	8.3	9.2	9.3	4.4	7.4	5.2
Instruction support	0.2	0.1	0.6	0.5	1.5	5.4	4.9
Other		0.1	0.3	0.4		0.2	0.2

Comparative Information

	District			State 2008
	2006	2007	2008	
Student/teacher ratio	16.6	16.7	14.6	17.3
Average teacher salary	\$36,339	\$41,363	\$39,227	\$44,967
Average years' experience	10.0	8.4	8.5	8.1

Classroom dollar ranking: 76 of 230 districts.

Proposition 301

District-reported 2008 results

Teacher pay

- On average, each teacher earned \$4,896 in additional salary.

Performance

- The District accomplished its goals, which were similar to the prior fiscal year's goals and were based on school and individual performance.
- Students had to improve their standardized test scores over the prior year's in 3 categories.
- The District scored a grade of "B" or higher on parent satisfaction surveys.
- Parent-teacher meetings were held.

Menu

- Teachers were compensated for holding face-to-face meetings with parents.
- 9 teachers participated in after-school tutoring for AIMS intervention.
- Teachers were also compensated for participating in professional development activities focusing on Structured English Immersion, reading, math, and technology.