

Eloy Elementary School District

Pinal County

Efficiency peer groups 9 and T-6, Achievement peer group 18¹

Legislative district(s): 8 and 11

District size, location:

Medium, Rural

Students attending:

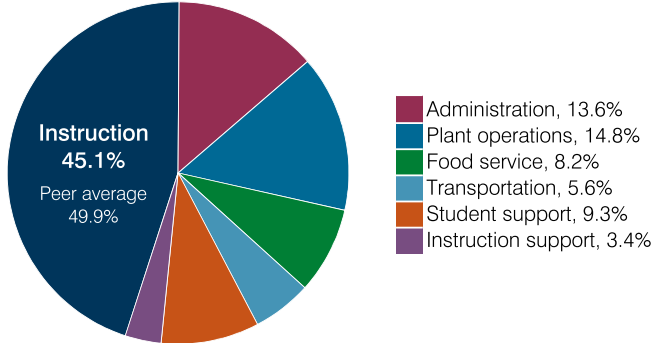
822

Number of schools:

3

OPERATIONAL EFFICIENCY

Spending by operational area



Efficiency measures relative to peer averages

Operational area	Measure	District	Peer average	State average
Administration	Cost per pupil	\$1,226	\$1,098	\$860
	Students per administrative position	44	59	66
Plant operations	Cost per square foot	\$6.95	\$6.52	\$6.34
	Square footage per student	192	161	156
Food service	Cost per meal	\$3.53	\$3.10	\$3.02
Transportation	Cost per mile	\$4.11	\$3.96	\$4.05
	Cost per rider	\$1,502	\$721	\$1,301

Very low
Low
Comparable
High
Very high

Per pupil spending

Spending by area	District		Peer average 2018	State average 2018
	2017	2018		
Instruction	\$ 4,259	\$ 4,063	\$ 4,233	\$ 4,480
Administration	1,350	1,226	1,098	860
Plant operations	1,322	1,335	1,034	988
Food service	653	740	591	425
Transportation	373	506	526	388
Student support	760	840	584	693
Instruction support	370	306	462	462
Total operational	9,087	9,016	8,528	8,296
Land and buildings	1,270	630	416	827
Equipment	247	382	316	409
Interest	81	79	75	228
Other	4	11	170	169
Total nonoperational	1,602	1,102	977	1,633
Total per pupil spending	\$ 10,689	\$ 10,118	\$ 9,505	\$ 9,929

¹ See Appendix A for information such as districts included in each peer group and Appendix B for sources and methodology.

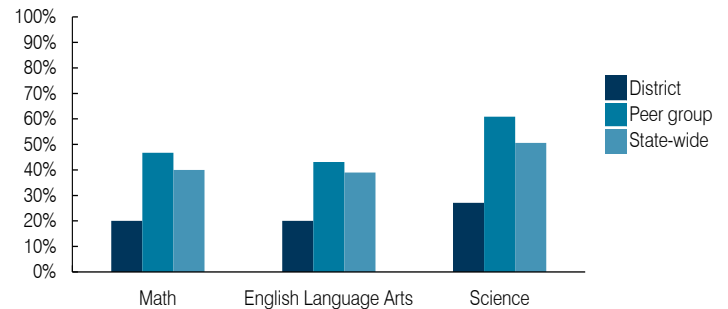
STUDENT ACHIEVEMENT, STUDENT AND TEACHER MEASURES, AND REVENUES

ADE-assigned school letter grades

Grade	Number of schools ²	Percentage of schools
A	0	0%
B	1	50%
C	0	0%
D	1	50%
F	0	0%

² Excludes schools for which letter grades were not published by ADE. See Appendix B for more information.

Students who passed State assessments



Student and teacher measures

Measure	District	Peer average	State average
Attendance rate	94%	94%	94%
Graduation rate (2017)	N/A	N/A	N/A
Poverty rate (2017)	29%	25%	19%
Special education population	12%	17%	12%
Students per teacher	17.5	12.6	18.4
Average teacher salary	\$40,066	\$47,486	\$48,951
Amount from Prop 301	\$4,669	\$4,484	\$6,411
Average years of teacher experience	14.5	14.9	11.4
Percentage of teachers in first 3 years	9%	7%	19%

Per pupil revenues

Revenues by source	District		Peer average 2018	State average 2018
	2017	2018		
Federal	\$ 2,733	\$ 2,264	\$ 1,836	\$ 1,317
State	6,432	5,794	4,904	4,011
Local	1,666	1,740	2,715	4,592
Total per pupil revenues	\$ 10,831	\$ 9,798	\$ 9,455	\$ 9,920

Select revenues from common sources

Equalization formula funding	\$ 5,517	\$ 5,468	\$ 5,707	\$ 5,585
Grants	3,968	2,900	2,113	1,241
Donations and tax credits	18	19	67	90

Select revenues from less common sources

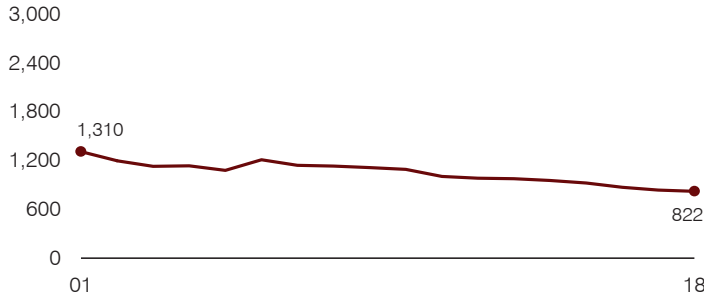
			Number of peers receiving
Desegregation	\$ 0	\$ 0	0 of 10
Small school adjustment	0	0	0 of 10
Federal impact aid	0	0	3 of 10
Voter-approved levy increases	683	679	8 of 10

Instructional spending percentage

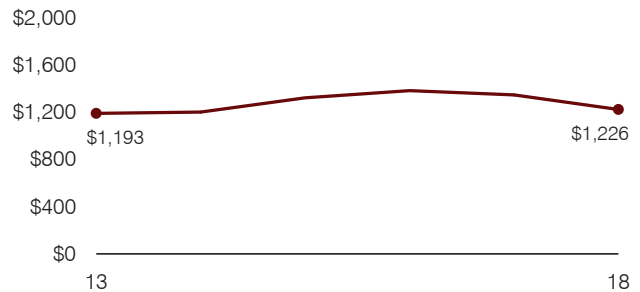
Year: 2001 2002 2003 2004 2005 2006 2007 2008 2009 2010 2011 2012 2013 2014 2015 2016 2017 2018
 Percentage: 56.9 54.4 54.0 52.2 51.3 52.9 52.4 51.5 50.7 47.5 47.9 47.0 46.7 43.9 44.7 47.3 46.9 45.1

TRENDS AND FINANCIAL STRESS ASSESSMENT
 Fiscal years as indicated

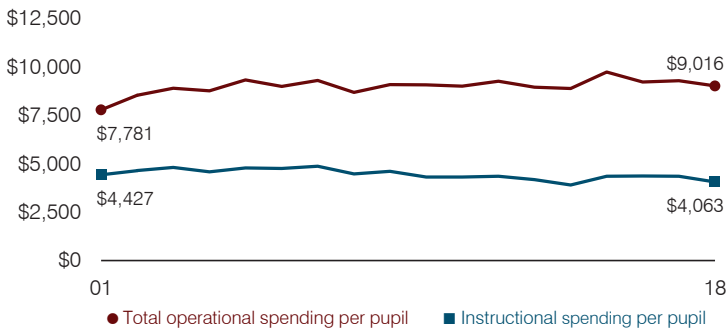
Students attending



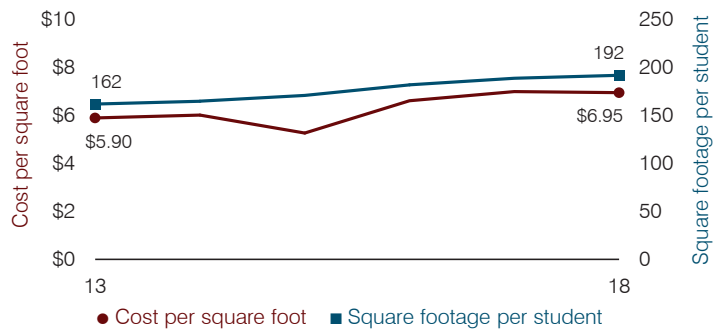
Administrative cost per pupil



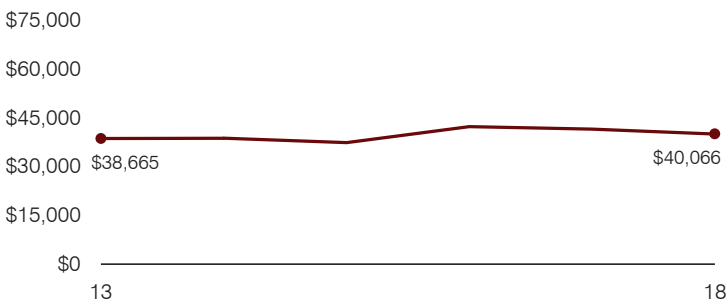
Total operational and instructional spending per pupil (inflation adjusted to 2018 dollars)



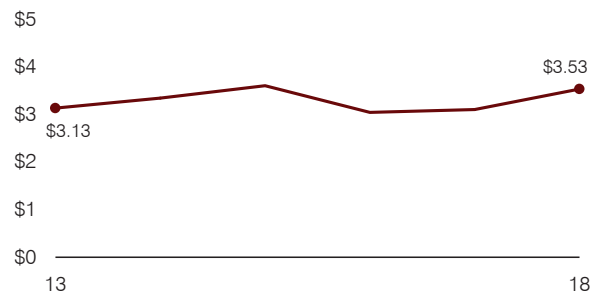
Plant cost per square foot and square footage per student



Average teacher salary



Food service cost per meal



Financial stress assessment

Overall financial stress level: **Low**

Measure: 2016 through 2018	Assessment
Change in number of district students	Moderate decrease
Spending exceeded operating/capital budgets	No overspending
Spending increase election results	Voter-approved
Operating reserve percentage, Trend	6.7%, Decreasing
Years of capital reserve held	1 to 3 years
Current financial and internal control status	Compliant

Low
Moderate
High

Transportation costs per mile and per rider

