

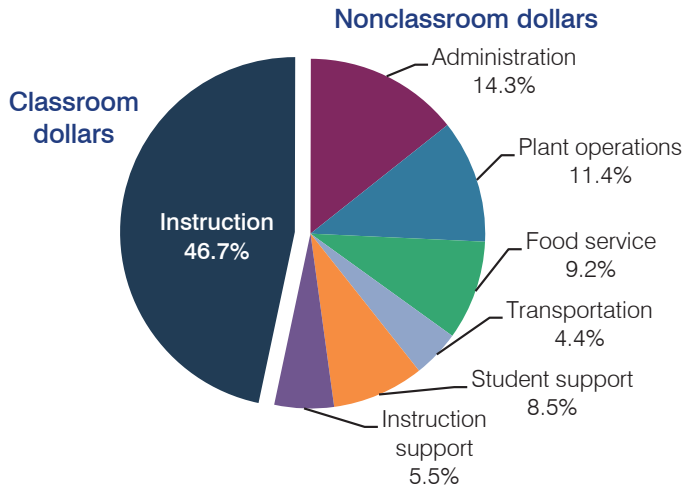
Eloy Elementary School District

Pinal County
 Efficiency peer groups 9 and T-6, Achievement peer group 20
 Legislative district(s): 8 and 11

District size, location: Medium, Rural
 Students attending: 977
 Number of schools: 3

OPERATIONAL EFFICIENCY

Spending by operational area



5-year spending trend

Total spending per pupil increased by 13 percent. Spending in the classroom decreased from 51.5 to 46.7 percent. Overall, spending on administration and instruction support increased substantially, spending on transportation increased slightly, and spending on student support decreased. Spending on other nonclassroom areas varied year to year.

Cost measures relative to peer averages

Operational area	Measure	District	Peer average	State average
Administration	Cost per pupil	\$1,193	\$883	\$746
	Students per administrator	43	65	67
Plant operations	Cost per square foot	\$5.90	\$6.31	\$6.03
	Square footage per student	162	135	153
Food service	Cost per meal equivalent	\$3.13	\$2.63	\$2.58
Transportation	Cost per mile	\$4.78	\$3.58	\$3.55
	Cost per rider	\$595	\$462	\$1,015

Very low Low Comparable High Very high

Per pupil spending by operational area

	District		Peer average	State average	National average
	2012	2013	2013	2013	2011
Total	\$8,492	\$8,348	\$7,185	\$7,496	\$10,658
Classroom dollars	3,987	3,899	3,621	4,031	6,520
Nonclassroom dollars:	4,505	4,449	3,564	3,465	4,138
Administration	1,236	1,193	883	746	1,138
Plant operations	989	954	836	924	1,015
Food service	762	769	535	396	412
Transportation	363	366	431	369	452
Student support	769	706	435	582	593
Instruction support	386	461	444	448	528

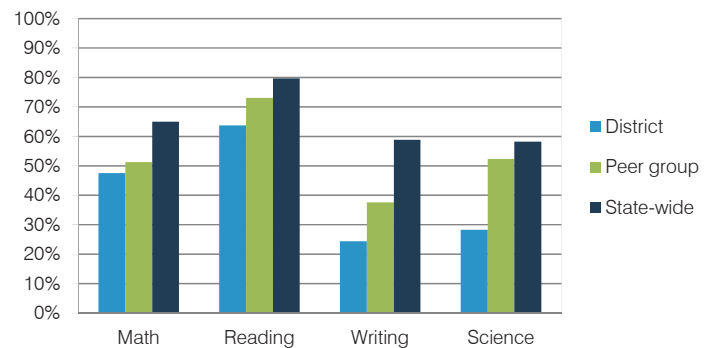
STUDENT ACHIEVEMENT, TEACHER MEASURES, AND FINANCIAL ASSESSMENT

ADE-reported district and school letter grades

District grade: **C**

Grade	Number of schools	Percentage of schools
A	0	0%
B	0	0%
C	2	67%
D	1	33%
F	0	0%
Not rated	0	0%

Students who met state standards (AIMS)



Student and teacher measures

Measure	District	Peer average	State average
Attendance rate	95%	94%	94%
Graduation rate (2012)	N/A	N/A	N/A
Poverty rate (2012)	40%	38%	25%
Students per teacher	17.4	15.1	18.3
Average teacher salary	\$38,665	\$44,190	\$45,264
Amount from Proposition 301	\$2,991	\$3,324	\$3,784
Average years of teacher experience	14.1	11.1	10.9
Percentage of teachers in first 3 years	14%	20%	19%

Financial stress assessment

Overall financial stress level: **Low**

Measure: 2011 through 2013

Measure	Assessment
Number of students attending district	Steady
Spending exceeded operating/capital budgets	No overspending
Spending increase election results	Mixed election results
Operating reserve percentage (max. 4%), trend	3.5%, Varying
Years of capital reserve held	1 to 3 years
Current financial and internal control status	Compliant

Stress level

