

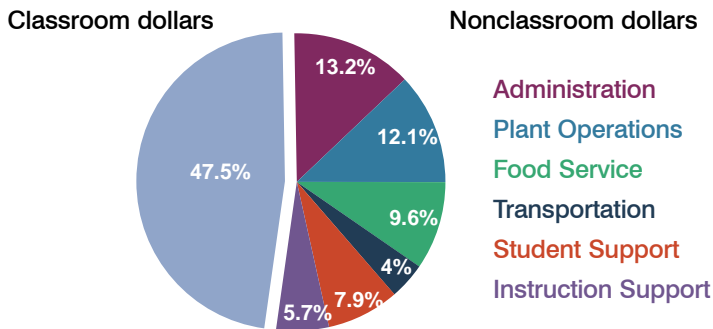
Eloy Elementary School District

Pinal County
Peer groups: Efficiency 10, Achievement 6
Legislative district(s): 23

District size: Medium
Students attending: 1,092
Number of schools: 4

OPERATIONAL EFFICIENCY

Spending by function

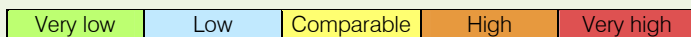


5-year trend

Total spending per pupil increased by 10 percent. Spending in the classroom varied year to year, decreasing significantly overall from 51.3 to 47.5 percent. Spending on administration and instruction support increased significantly and spending on student support decreased significantly. Spending in other nonclassroom areas varied year to year.

District's cost measures relative to peer group

Operational Area	Measure	District	Peer Average	State Average
Administration	Cost per pupil	\$1,045	\$1,019	\$721
	Students per administrator	50	65	66
Plant Operations	Cost per square foot	\$6.65	\$6.70	\$6.25
	Square footage per student	145	130	146
Food Service	Cost per meal equivalent	\$2.84	\$2.42	\$2.41
Transportation	Cost per mile	\$3.66	\$3.03	\$3.35
	Miles per rider	162	196	282

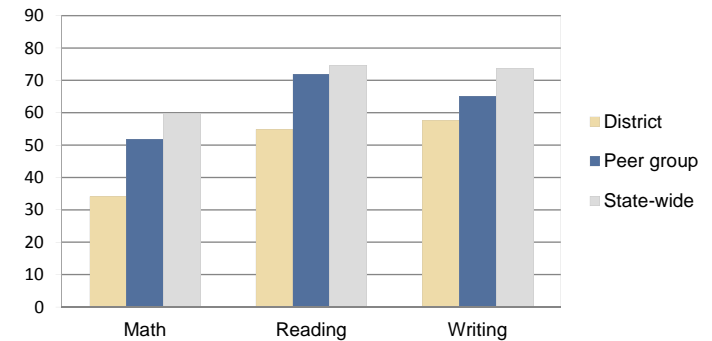


Per-pupil spending by function

	District		Peer 2010	State 2010	National 2008
	2009	2010			
Total	\$7,856	\$7,929	\$7,810	\$7,609	\$10,297
Classroom dollars	\$3,984	\$3,768	\$4,011	\$4,253	\$6,262
Nonclassroom dollars:	\$3,872	\$4,161	\$3,799	\$3,356	\$4,035
Administration	993	1,045	1,019	721	1,109
Plant Operations	863	962	916	914	1,003
Food Service	736	763	503	366	390
Transportation	282	314	432	342	438
Student Support	732	623	478	581	556
Instruction Support	266	454	451	432	539

STUDENT ACHIEVEMENT AND TEACHER INFORMATION

Percentage of students meeting state standards (AIMS)



Adequate Yearly Progress (AYP) toward federal goals

1 school met all applicable AYP objectives for NCLB. 2 did not because some students did not demonstrate sufficient academic progress. An AYP determination was not available for 1 school.

Student and teacher information

Measure	District	Peer Average	State Average
Attendance rate	94%	94%	94%
Graduation rate (2009)	N/A	N/A	76%
Poverty rate (2009)	28%	27%	21%
Student/teacher ratio	17.3	13.1	17.9
Average teacher salary	\$33,733	\$42,747	\$47,077
Average years' experience	13.5	13.8	10.6
Percent of teachers in first 3 years	11%	9%	20%

Proposition 301

Teacher and other staff pay

On average, each teacher earned \$3,082 in additional pay, and each speech pathologist, counselor, psychologist, and AIMS interventionist earned between \$356 and \$3,082.

Performance pay plan goals and results

Type of goal	Goal met?
Student achievement	■
Dropout/graduation rates	-
Student attendance	■
Parent/student satisfaction	-
Teacher attendance	-
Teacher professional development	-
Teacher evaluations	■
Tutoring	-
Other	-

■ = yes, □ = no, ▴ = partially, and - = no goal set