

# Eloy Elementary School District

Pinal County  
Operational peer group: J  
Legislative districts: 23

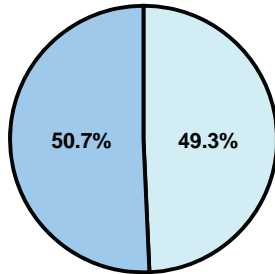
District size: Medium  
Students attending: 1,114  
Number of schools: 4

## OPERATIONAL EFFICIENCY

### Average per-pupil spending

District  
State

Classroom  
**\$3,984**  
\$4,497



Nonclassroom  
**\$3,872**  
\$3,411

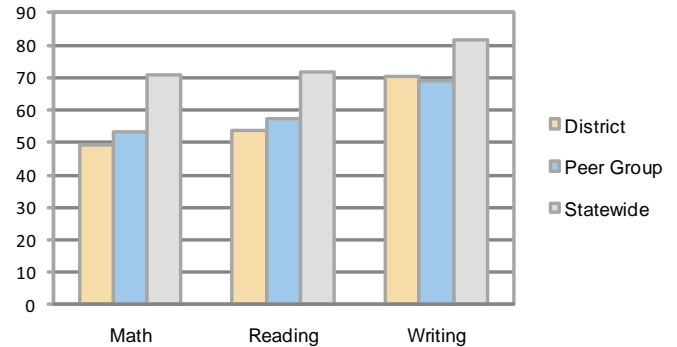
Total  
**\$7,856**  
\$7,908

### 5-year trend

Total spending per pupil increased by 19 percent. Spending in the classroom varied year to year and decreased overall from 52.2 to 50.7 percent. Spending on administration and student support increased, while spending in other nonclassroom areas varied year to year.

## STUDENT ACHIEVEMENT AND TEACHER INFORMATION

### Percentage of students meeting state standards (AIMS)



### Adequate Yearly Progress (AYP) toward federal goals

1 school met all applicable AYP objectives for NCLB. 2 did not because some students did not demonstrate sufficient academic progress. An AYP determination was not available for 1 school.

### Student and teacher information

Measure	District	Peer average	State average
Attendance rate	95%	93%	95%
Graduation rate (2008)	N/A	70%	75%
Poverty rate	24%	31%	19%
Student/teacher ratio	18.6	14.9	17.1
Average teacher salary	\$39,763	\$41,086	\$45,209
Average years' experience	11.4	11.1	8.3
Percent of teachers in first 3 years	23%	20%	16%

### District's cost measures relative to peer group

Operational Area	Measure	District	Peer Average	State Average
Administration	Cost per pupil	\$993	\$921	\$729
	Students per administrator	45	64	66
Plant Operations	Cost per square foot	\$6.09	\$6.71	\$6.40
	Square footage per student	142	125	144
Food Service	Cost per meal equivalent	\$2.86	\$2.56	\$2.53
Transportation	Cost per mile	\$4.16	\$3.04	\$3.36
	Miles per rider	124	145	271

Very Low   Low   Comparable   High   Very High

### Per-pupil spending by function

	District		Peer	State	National
	2008	2009	2009	2009	2007
<b>Total</b>	<b>\$7,411</b>	<b>\$7,856</b>	<b>\$7,752</b>	<b>\$7,908</b>	<b>\$9,683</b>
<b>Classroom dollars</b>	<b>\$3,820</b>	<b>\$3,984</b>	<b>\$4,151</b>	<b>\$4,497</b>	<b>\$5,903</b>
<b>Nonclassroom dollars:</b>	<b>\$3,591</b>	<b>\$3,872</b>	<b>\$3,601</b>	<b>\$3,411</b>	<b>\$3,780</b>
Administration	861	993	921	729	1,050
Plant Operations	856	863	879	920	951
Food Service	681	736	524	382	369
Transportation	266	282	410	343	406
Student Support	740	732	483	594	512
Instruction Support	187	266	384	431	470
Other	0	0	0	12	22

### Proposition 301

#### Teacher pay

On average, each teacher, counselor, special education director, reading coach, and reading interventionist earned between \$3,668 and \$3,851 in additional salary.

#### Performance pay plan goals and results

Type of goal	Goal met?
Student achievement	■
Dropout/ graduation rates	
Student attendance	■
Parent/student satisfaction	
Teacher attendance	
Teacher professional development	
Teacher evaluations	■
Tutoring	
Other	

■ = yes, □ = no, and ▮ = partially