

# Classroom Dollars and Proposition 301 Results

## Eloy Elementary School District

Pinal County

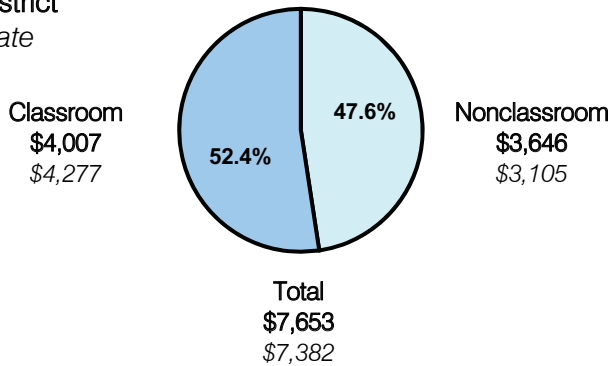
District size: Medium  
 Students attending: 1,142  
 Number of schools: 4  
 Number of certified teachers: 66

### Classroom Dollars

Fiscal year 2007 averages per pupil

District

State

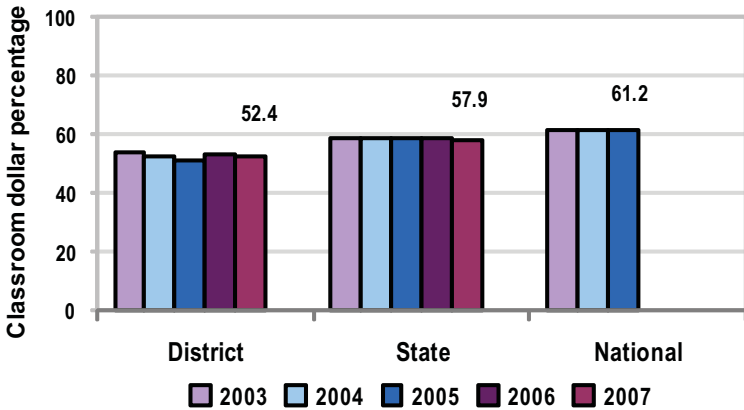


### Comparative Information

	District			State
	2005	2006	2007	2007
Student/teacher ratio	17.3	17.0	17.3	17.4
Average teacher salary	\$32,426	\$38,508	\$37,636	\$43,833
Average years' experience	10.1	8.5	8.3	8.1

Classroom dollar ranking: 157 of 229 districts.

### 5-year comparison



### Expenditures by function

	District					State	National
	2003	2004	2005	2006	2007	2007	2005
Classroom dollars	54.0	52.2	51.3	52.9	52.4	57.9	61.2
Nonclassroom dollars:							
Administration	12.2	11.8	11.0	10.9	11.7	9.5	11.0
Plant operations	11.7	11.6	11.1	11.9	10.7	11.3	9.6
Food service	8.0	9.2	9.6	6.8	7.6	4.7	3.9
Transportation	3.2	3.3	3.4	3.3	3.3	4.3	4.1
Student support	8.2	8.7	10.9	10.4	10.5	7.3	5.2
Instruction support	2.7	3.2	2.7	3.8	3.8	4.8	4.8
Other						0.2	0.2

### Proposition 301

#### District-reported 2007 results

##### Teacher pay

- On average, each teacher, speech pathologist, and counselor earned between \$2,229 and \$2,932 in additional salary.

##### Performance

- The District accomplished its goals, which were based on district and individual performance.
- Students met academic achievement goals as measured by their performance on the math portion of the AIMS test.
- The 100th-day student attendance rate was greater than 94 percent.
- Most teachers received acceptable performance evaluations. The amount of performance pay was reduced for teachers receiving a rating of "Falls Far Below" in any area.

##### Menu

- Monies continued to be used as additional teacher compensation to help offset health insurance costs.
- Monies were also used to pay a stipend to an academic coach who assisted teachers in teaching to the state standards.