

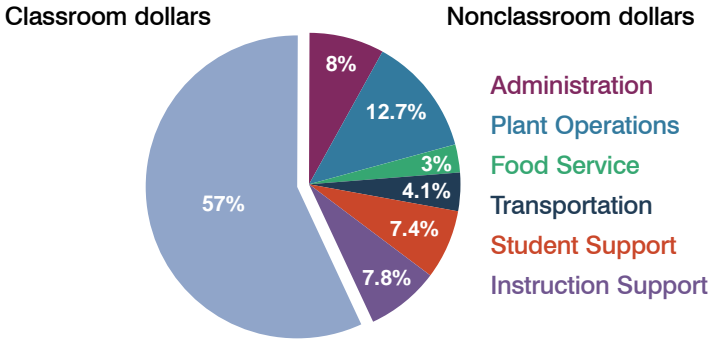
# Flagstaff Unified School District

Coconino County  
Peer groups: Efficiency Group 2, Achievement Group 3  
Legislative district(s): 1 and 2

District size: Large  
Students attending: 9,643  
Number of schools: 15

## OPERATIONAL EFFICIENCY

### Spending by operational area



### 5-year trend

Total spending per pupil increased by 18 percent. Spending in the classroom remained fairly stable, but decreased overall from 58.3 to 57 percent. Spending on administration and transportation decreased, and spending on plant operations and instruction support increased. Spending on other nonclassroom areas remained fairly stable.

### District's cost measures relative to peer group

Operational Area	Measure	District	Peer Average	State Average
Administration	Cost per pupil	\$670	\$611	\$728
	Students per administrator	73	70	66
Plant Operations	Cost per square foot	\$5.87	\$6.25	\$6.10
	Square footage per student	182	147	152
Food Service	Cost per meal equivalent	\$2.99	\$2.59	\$2.45
Transportation	Cost per mile	\$1.87	\$3.34	\$3.39
	Miles per rider	552	324	283

Very low   Low   Comparable   High   Very high

### Per-pupil spending by operational area

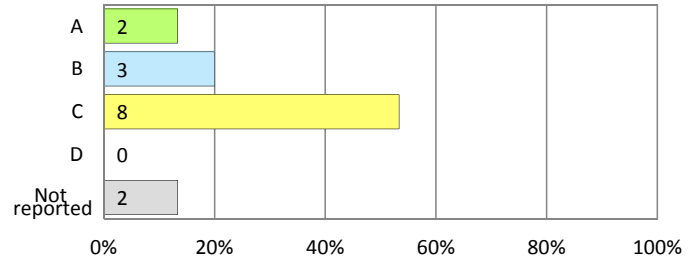
	District		Peer 2011	State 2011	National 2009
	2010	2011			
<b>Total</b>	<b>\$8,313</b>	<b>\$8,411</b>	<b>\$6,961</b>	<b>\$7,485</b>	<b>\$10,591</b>
<b>Classroom dollars</b>	<b>\$4,662</b>	<b>\$4,794</b>	<b>\$3,867</b>	<b>\$4,098</b>	<b>\$6,456</b>
<b>Nonclassroom dollars:</b>	<b>\$3,651</b>	<b>\$3,617</b>	<b>\$3,094</b>	<b>\$3,387</b>	<b>\$4,135</b>
Administration	748	670	611	728	1,147
Plant Operations	983	1,067	909	927	1,033
Food Service	255	257	304	375	404
Transportation	322	342	333	352	443
Student Support	671	622	518	571	573
Instruction Support	672	659	419	434	535

## STUDENT ACHIEVEMENT AND TEACHER INFORMATION

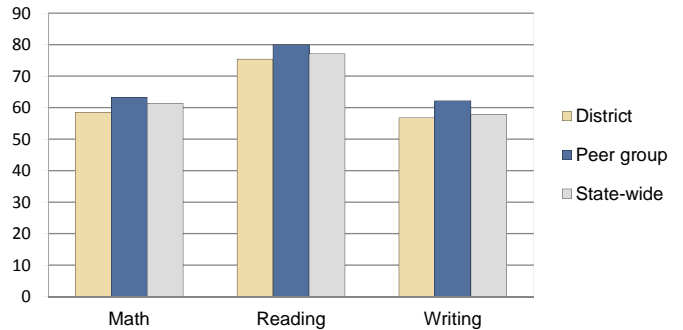
### District and school letter grades

District grade: **C**

### School grades (number and percentage):



### Percentage of students meeting state standards (AIMS)



### Student and teacher information

Measure	District	Peer Average	State Average
Attendance rate	93%	94%	95%
Graduation rate (2010)	80%	81%	78%
Poverty rate (2010)	22%	22%	22%
Students per teacher	17.1	18.0	18.1
Average teacher salary	\$46,433	\$46,077	\$45,637
Average years of experience	12.2	12.6	10.9
Percent of teachers in first 3 years	15%	9%	16%

### Proposition 301 pay, goals, and results

Average additional salary earned by teachers: \$1,670

Type of goal	Goal met?
Student achievement	■
Dropout/graduation rates	■
Student attendance	■
Parent/student satisfaction	■
Teacher attendance	-
Teacher professional development	■
Teacher evaluations	-
Tutoring	-
Other	-

■ = yes, □ = no, ▲ = partially, and - = no goal set