

Flagstaff Unified School District

Coconino County
Operational peer group: B
Legislative districts: 1, 2

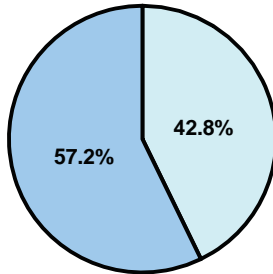
District size: Large
Students attending: 10,375
Number of schools: 17

OPERATIONAL EFFICIENCY

Average per-pupil spending

District
State

Classroom
\$4,794
\$4,497



Nonclassroom
\$3,581
\$3,411

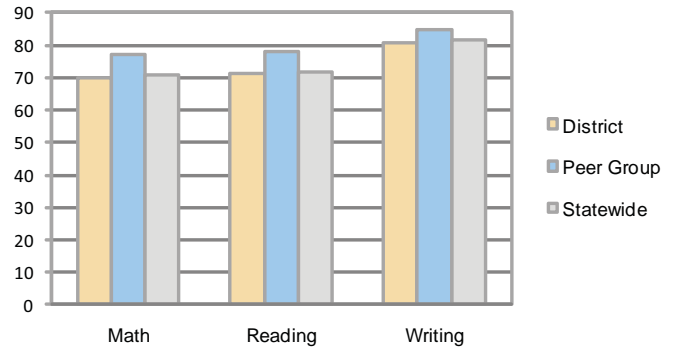
Total
\$8,375
\$7,908

5-year trend

Total spending per pupil increased by 31 percent. Spending in the classroom varied year to year and decreased overall from 58.4 to 56.6 percent. Spending on plant operations and instruction support increased, while spending in other nonclassroom areas was fairly stable.

STUDENT ACHIEVEMENT AND TEACHER INFORMATION

Percentage of students meeting state standards (AIMS)



Adequate Yearly Progress (AYP) toward federal goals

13 schools met all applicable AYP objectives for NCLB. 4 schools did not because they failed to achieve 1 or more of the following objectives: percentage of students tested (1); student achievement (4).

Student and teacher information

| Measure | District | Peer average | State average |
|--------------------------------------|----------|--------------|---------------|
| Attendance rate | 95% | 96% | 95% |
| Graduation rate (2008) | 81% | 85% | 75% |
| Poverty rate | 15% | 13% | 19% |
| Student/teacher ratio | 16.3 | 17.3 | 17.1 |
| Average teacher salary | \$46,243 | \$45,833 | \$45,209 |
| Average years' experience | 11.4 | 9.1 | 8.3 |
| Percent of teachers in first 3 years | 20% | 27% | 16% |

District's cost measures relative to peer group

| Operational Area | Measure | District | Peer Average | State Average |
|------------------|----------------------------|----------|--------------|---------------|
| Administration | Cost per pupil | \$648 | \$634 | \$729 |
| | Students per administrator | 69 | 67 | 66 |
| Plant Operations | Cost per square foot | \$5.55 | \$6.67 | \$6.40 |
| | Square footage per student | 169 | 142 | 144 |
| Food Service | Cost per meal equivalent | \$2.96 | \$2.64 | \$2.53 |
| Transportation | Cost per mile | \$2.40 | \$3.44 | \$3.36 |
| | Miles per rider | 293 | 290 | 271 |

Very Low Low Comparable High Very High

Per-pupil spending by function

| | District | | Peer | State | National |
|------------------------------|----------------|----------------|----------------|----------------|----------------|
| | 2008 | 2009 | 2009 | 2009 | 2007 |
| Total | \$8,005 | \$8,375 | \$7,523 | \$7,908 | \$9,683 |
| Classroom dollars | \$4,559 | \$4,794 | \$4,247 | \$4,497 | \$5,903 |
| Nonclassroom dollars: | \$3,446 | \$3,581 | \$3,276 | \$3,411 | \$3,780 |
| Administration | 677 | 648 | 634 | 729 | 1,050 |
| Plant Operations | 963 | 938 | 936 | 920 | 951 |
| Food Service | 234 | 252 | 310 | 382 | 369 |
| Transportation | 404 | 437 | 359 | 343 | 406 |
| Student Support | 657 | 625 | 571 | 594 | 512 |
| Instruction Support | 463 | 624 | 443 | 431 | 470 |
| Other | 48 | 57 | 23 | 12 | 22 |

Proposition 301

Teacher pay

On average, each teacher earned an additional \$5,001 in salary, and each librarian, speech pathologist, counselor, nurse, and therapist earned between \$3,080 and \$4,147.

Performance pay plan goals and results

| Type of goal | Goal met? |
|----------------------------------|-----------|
| Student achievement | ▴ |
| Dropout/ graduation rates | ■ |
| Student attendance | |
| Parent/student satisfaction | ■ |
| Teacher attendance | |
| Teacher professional development | ■ |
| Teacher evaluations | |
| Tutoring | |
| Other | |

■ = yes, □ = no, and ▴ = partially