

# Classroom Dollars and Proposition 301 Results

## Florence Unified School District

Pinal County

District size: Medium  
 Students attending: 4,806  
 Number of schools: 5  
 Number of certified teachers: 263

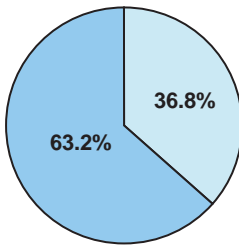
### Classroom Dollars

Fiscal year 2006 averages per pupil

District

State

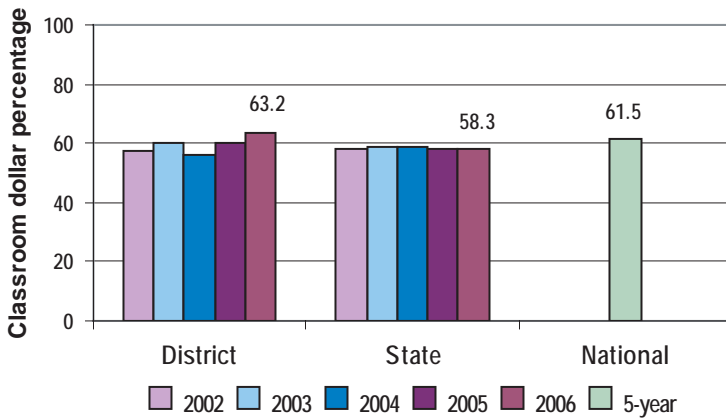
Classroom  
 \$3,816  
 \$3,981



Nonclassroom  
 \$2,222  
 \$2,852

Total  
 \$6,038  
 \$6,833

5-year comparison



Expenditures by function

	District					State 2006	National 5-year
	2002	2003	2004	2005	2006		
Classroom dollars	57.6	59.8	56.4	59.9	63.2	58.3	61.5
Nonclassroom dollars:							
Administration	14.8	12.6	12.0	11.0	9.2	9.4	11.0
Plant operations	11.0	12.7	14.4	12.3	12.0	11.2	9.6
Food service	3.2	4.6	5.0	4.9	4.2	4.7	3.9
Transportation	5.6	5.5	5.4	5.7	5.6	4.2	4.0
Student support	5.1	3.6	4.8	5.5	4.8	7.2	5.1
Instruction support	2.7	1.1	2.0	0.7	1.0	4.8	4.7
Other		0.1				0.2	0.2

### Comparative Information

	District			State
	2004	2005	2006	2006
Student/teacher ratio	16.7	18.7	18.3	17.7
Average teacher salary	\$32,562	\$42,600	\$38,152	\$42,967
Average years' experience	5.4	5.5	4.8	8.3

Classroom dollar ranking: 16 of 229 districts.

### Proposition 301

#### District-reported 2006 results

##### Teacher pay

- On average, each teacher earned an additional \$2,083 in salary.

##### Performance

- The District did not accomplish most of its goals, which were based on school and individual performance.
- Most teachers participated in 40 hours of approved professional development activities and received favorable performance evaluations.
- The goals not met required high school students' AIMS test scores to show a 1 percent growth in reading, writing, and math, and for the student attendance rate to be at least 95 percent.

##### Menu

- Monies were used to pay for 3 math specialists to train teachers in the district-adopted math programs.
- Individual school sites were also funded for additional professional development activities, grade level and curriculum team leaders, a staff development coordinator, and a literacy coach.