

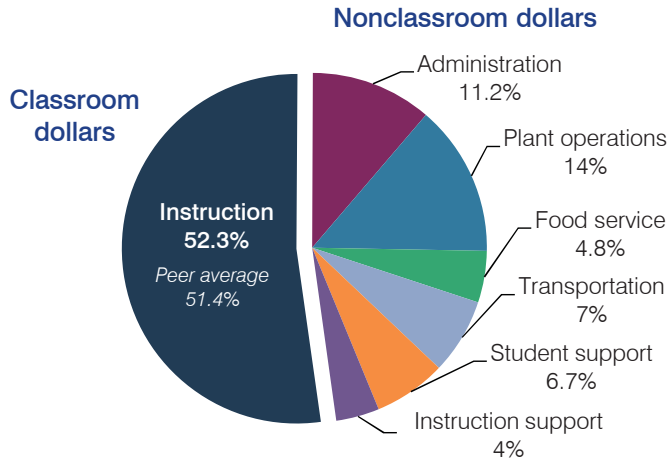
# Florence Unified School District

Pinal County  
 Efficiency peer groups 4 and T-10, Achievement peer group 4  
 Legislative district(s): 8

District size, location: Large, Rural  
 Students attending: 8,054  
 Number of schools: 9

## OPERATIONAL EFFICIENCY

### Spending by operational area



### Efficiency measures relative to peer averages

Operational area	Measure	District	Peer average	State average
Administration	Cost per pupil	\$760	\$798	\$780
	Students per administrative position	78	65	67
Plant operations	Cost per square foot	\$6.17	\$5.52	\$6.09
	Square footage per student	154	191	153
Food service	Cost per meal equivalent	\$2.47	\$2.80	\$2.79
Transportation	Cost per mile	\$2.53	\$2.01	\$3.66
	Cost per rider	\$1,168	\$1,256	\$1,071

Very low   Low   Comparable   High   Very high

### Per pupil spending

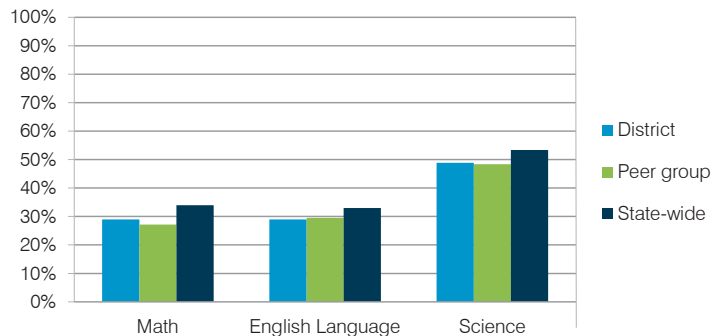
Spending by area	District		Peer average	State average
	2014	2015	2015	2015
Instruction	\$ 3,413	\$ 3,556	\$ 3,941	\$ 4,105
Administration	811	760	798	780
Plant operations	971	951	1,045	930
Food service	328	327	419	417
Transportation	457	477	411	371
Student support	492	460	597	613
Instruction support	274	272	479	442
<b>Total operational</b>	<b>\$ 6,746</b>	<b>\$ 6,803</b>	<b>\$ 7,690</b>	<b>\$ 7,658</b>
Land and buildings	\$ 182	\$ 126	\$ 382	\$ 641
Equipment	393	382	281	383
Interest	221	188	200	225
Other	51	80	59	150
<b>Total nonoperational</b>	<b>\$ 847</b>	<b>\$ 776</b>	<b>\$ 922</b>	<b>\$ 1,399</b>
<b>Total per pupil spending</b>	<b>\$ 7,593</b>	<b>\$ 7,579</b>	<b>\$ 8,612</b>	<b>\$ 9,057</b>

## STUDENT AND TEACHER MEASURES, FINANCIAL ASSESSMENT, AND REVENUE

### Student and teacher measures

Measure	District	Peer average	State average
Attendance rate	94%	94%	94%
Graduation rate (2014)	81%	88%	76%
Poverty rate (2014)	18%	16%	23%
Students per teacher	18.7	16.1	18.6
Average teacher salary	\$41,223	\$42,544	\$46,008
Average years of teacher experience	6.7	10.5	11.0
Percentage of teachers in first 3 years	35%	19%	20%

### Students who met state standards



### Financial stress assessment

Overall financial stress level: **Moderate**

Measure: 2013 through 2015	Assessment
Change in number of district students	Steady
Spending exceeded operating/capital budgets	No overspending
Spending increase election results	Voter-rejected
Operating reserve percentage (max. 4%), trend	2.1%, Decreasing
Years of capital reserve held	1 to 3 years
Current financial and internal control status	Compliant

Low   Moderate   High

### Per pupil revenues

Revenues by source	District		Peer average	State average
	2014	2015	2015	2015
Federal	\$ 854	\$ 749	\$ 2,889	\$ 1,299
State	4,444	4,359	3,860	3,517
Local	2,854	2,682	2,930	4,248
<b>Total revenues per pupil</b>	<b>\$ 8,152</b>	<b>\$ 7,790</b>	<b>\$ 9,679</b>	<b>\$ 9,064</b>
<b>Select revenues from common sources</b>				
Equalization formula funding	\$ 5,728	\$ 5,343	\$ 5,185	\$ 5,303
Grants	887	759	1,573	1,167
Donations and tax credits	62	38	48	78
<b>Select revenues from less common sources</b>				
Desegregation	\$ 0	\$ 0	1 of 18	
Small school adjustment	0	0	0 of 18	
Federal impact aid	0	0	7 of 18	
Voter-approved levy increases	882	557	15 of 18	

# Florence USD—page 2

## Classroom dollar percentage

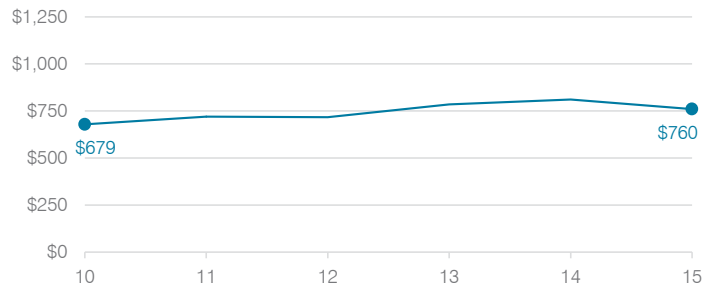
Year:	2001	2002	2003	2004	2005	2006	2007	2008	2009	2010	2011	2012	2013	2014	2015
Percentage:	54.6	57.6	59.8	56.4	59.9	63.2	56.1	56.2	55.4	57.3	54.0	53.4	51.7	50.6	52.3

### OPERATIONAL TRENDS Fiscal years as indicated

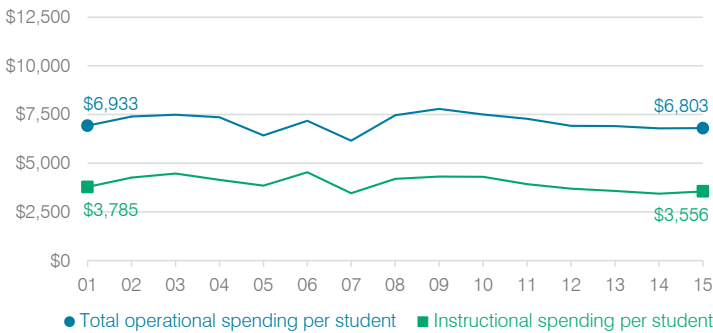
#### 5-year spending trend (2010 through 2015)

Total operational spending per pupil, adjusted for inflation, decreased by 9 percent. Spending in the classroom varied year to year, decreasing overall from 57.3 to 52.3 percent. As a percentage of total operational spending, administration and instruction support increased, plant operations, food service, and student support increased slightly, and transportation remained fairly stable.

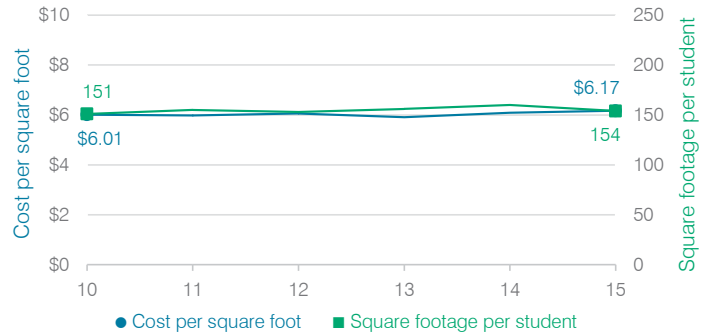
#### Administrative cost per student



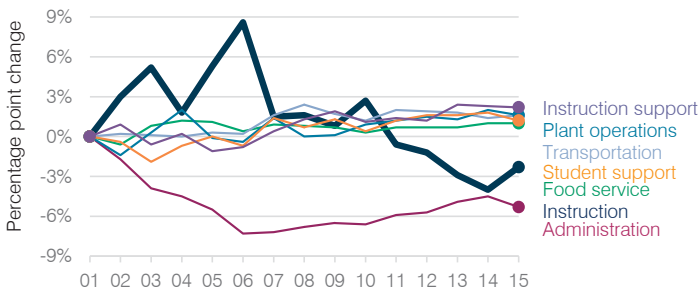
#### Total operational and instructional spending per student (inflation adjusted to 2015 dollars)



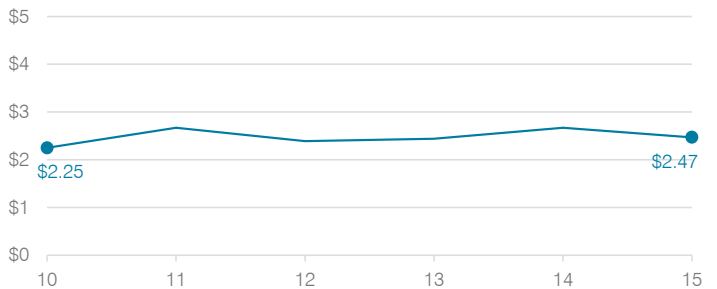
#### Plant cost per square foot and square footage per student



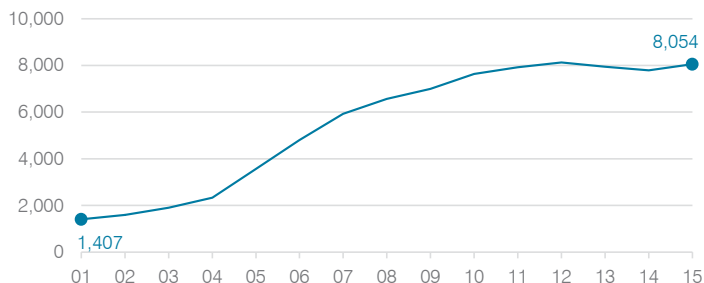
#### Changes in operational spending percentages



#### Food service cost per meal



#### Students attending



#### Transportation costs per mile and per rider

