

Flowing Wells Unified School District

Pima County

Efficiency peer groups 3 and T-1, Achievement peer group 6¹

Legislative district(s): 3, 9, and 11

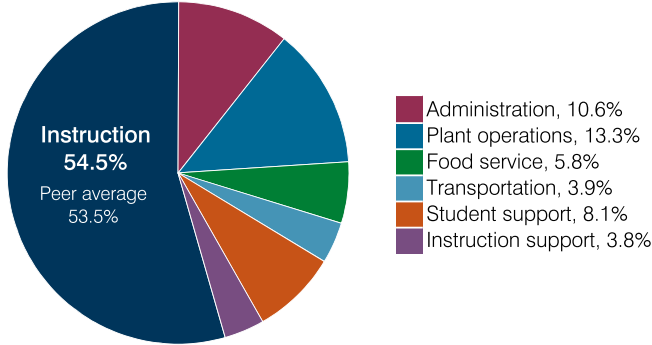
District size, location: Medium-large, Suburb

Students attending: 5,367

Number of schools: 9

OPERATIONAL EFFICIENCY

Spending by operational area



Efficiency measures relative to peer averages

Operational area	Measure	District	Peer average	State average
Administration	Cost per pupil	\$815	\$846	\$860
	Students per administrative position	74	69	66
Plant operations	Cost per square foot	\$6.97	\$6.02	\$6.34
	Square footage per student	147	155	156
Food service	Cost per meal	\$3.16	\$3.20	\$3.02
Transportation	Cost per mile	\$6.57	\$7.19	\$4.05
	Cost per rider	\$1,168	\$1,106	\$1,301

Very low
Low
Comparable
High
Very high

Per pupil spending

Spending by area	District		Peer average 2018	State average 2018
	2017	2018		
Instruction	\$ 4,117	\$ 4,199	\$ 4,106	\$ 4,480
Administration	828	815	846	860
Plant operations	1,054	1,026	963	988
Food service	444	448	325	425
Transportation	283	299	438	388
Student support	629	622	672	693
Instruction support	291	294	336	462
Total operational	7,646	7,703	7,686	8,296
Land and buildings	111	137	1,416	827
Equipment	223	195	473	409
Interest	136	121	268	228
Other	4	6	165	169
Total nonoperational	474	459	2,322	1,633
Total per pupil spending	\$ 8,120	\$ 8,162	\$ 10,008	\$ 9,929

¹ See Appendix A for information such as districts included in each peer group and Appendix B for sources and methodology.

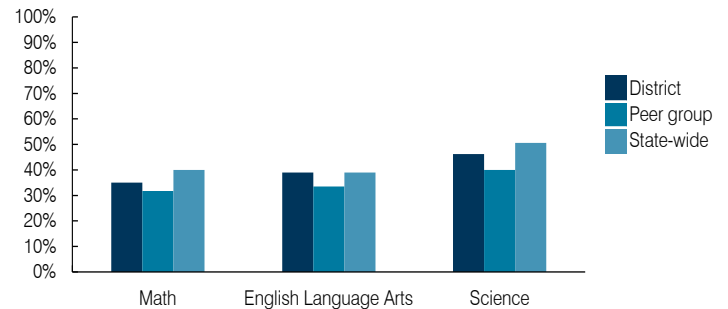
STUDENT ACHIEVEMENT, STUDENT AND TEACHER MEASURES, AND REVENUES

ADE-assigned school letter grades

Grade	Number of schools ²	Percentage of schools
A	1	13%
B	5	62%
C	2	25%
D	0	0%
F	0	0%

² Excludes schools for which letter grades were not published by ADE. See Appendix B for more information.

Students who passed State assessments



Student and teacher measures

Measure	District	Peer average	State average
Attendance rate	94%	93%	94%
Graduation rate (2017)	87%	85%	78%
Poverty rate (2017)	27%	29%	19%
Special education population	15%	14%	12%
Students per teacher	18.7	16.2	18.4
Average teacher salary	\$44,600	\$46,264	\$48,951
Amount from Prop 301	\$6,122	\$6,122	\$6,411
Average years of teacher experience	10.4	12.2	11.4
Percentage of teachers in first 3 years	30%	20%	19%

Per pupil revenues

Revenues by source	District		Peer average 2018	State average 2018
	2017	2018		
Federal	\$ 1,225	\$ 1,234	\$ 730	\$ 1,317
State	3,757	4,019	3,583	4,011
Local	3,277	3,188	5,234	4,592
Total per pupil revenues	\$ 8,259	\$ 8,441	\$ 9,547	\$ 9,920

Select revenues from common sources

Equalization formula funding	\$ 4,877	\$ 5,001	\$ 5,507	\$ 5,585
Grants	1,301	1,359	864	1,241
Donations and tax credits	118	106	184	90

Select revenues from less common sources

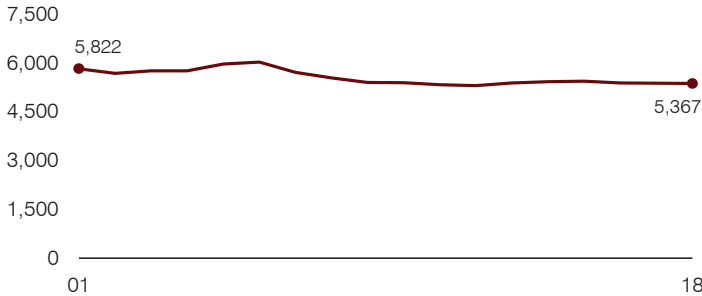
			Number of peers receiving
Desegregation	\$ 0	\$ 0	1 of 15
Small school adjustment	0	0	0 of 15
Federal impact aid	0	0	3 of 15
Voter-approved levy increases	892	904	15 of 15

Instructional spending percentage

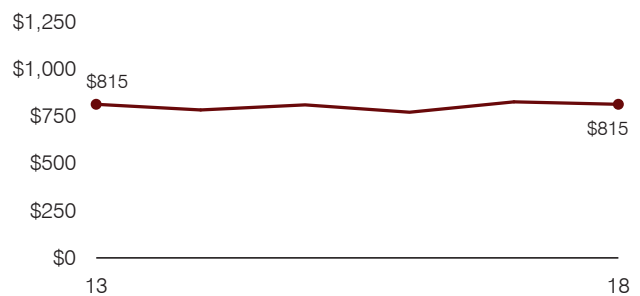
Year: 2001 2002 2003 2004 2005 2006 2007 2008 2009 2010 2011 2012 2013 2014 2015 2016 2017 2018
 Percentage: 57.8 59.4 59.7 60.6 60.7 60.0 59.0 57.7 58.4 54.8 53.2 51.9 52.3 53.1 54.2 53.7 53.8 54.5

TRENDS AND FINANCIAL STRESS ASSESSMENT
 Fiscal years as indicated

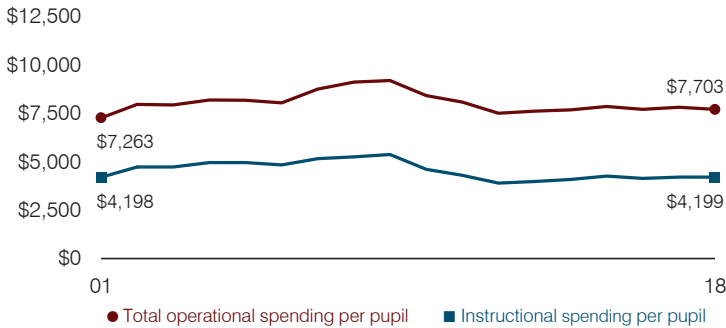
Students attending



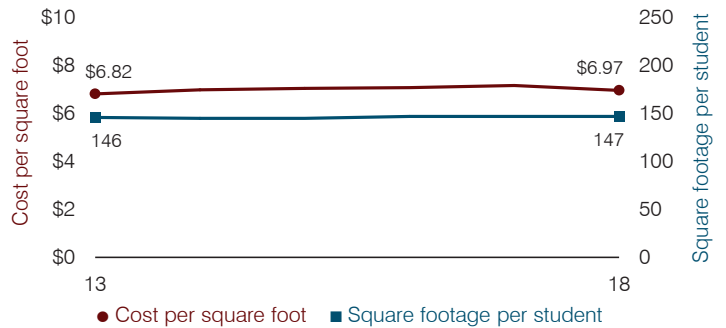
Administrative cost per pupil



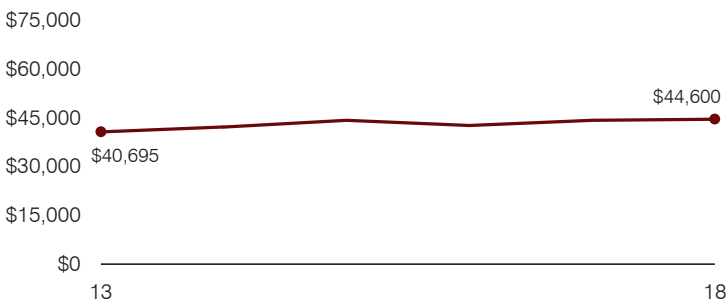
Total operational and instructional spending per pupil (inflation adjusted to 2018 dollars)



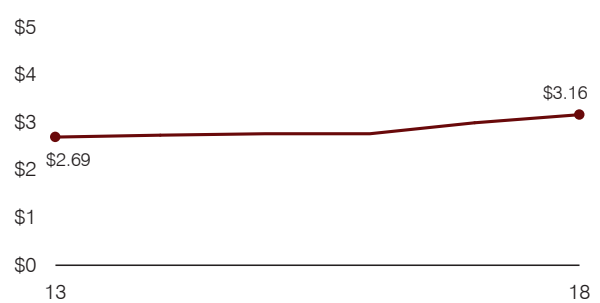
Plant cost per square foot and square footage per student



Average teacher salary



Food service cost per meal



Financial stress assessment

Overall financial stress level: **Low**

Measure: 2016 through 2018	Assessment
Change in number of district students	Steady
Spending exceeded operating/capital budgets	No overspending
Spending increase election results	Voter-approved
Operating reserve percentage, Trend	5.4%, Decreasing
Years of capital reserve held	More than 3 years
Current financial and internal control status	Compliant

Low **Moderate** **High**

Transportation costs per mile and per rider

