

Flowing Wells Unified School District

Pima County

Efficiency peer groups 3 and T-2, Achievement peer group 7

Legislative district(s): 3, 9 and 11

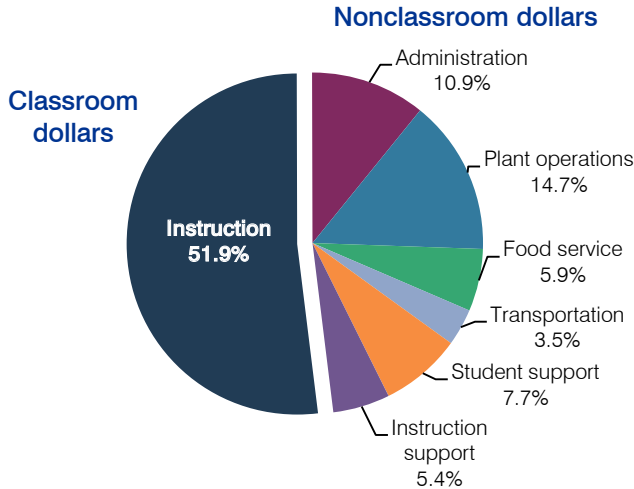
District size / location: Medium-Large, Suburb

Students attending: 5,304

Number of schools: 9

OPERATIONAL EFFICIENCY

Spending by operational area



5-year spending trend

Total spending per pupil decreased by 4 percent. Spending in the classroom varied year to year, decreasing overall from 59 to 51.9 percent. Spending on administration and instruction support increased substantially, and spending on plant operations and student support increased. Spending on other nonclassroom areas remained stable.

Cost measures relative to peer averages

Operational area	Measure	District	Peer average	State average
Administration	Cost per pupil	\$751	\$736	\$736
	Students per administrator	75	71	66
Plant operations	Cost per square foot	\$6.85	\$5.88	\$6.09
	Square footage per student	148	158	152
Food service	Cost per meal equivalent	\$2.55	\$2.74	\$2.47
Transportation	Cost per mile	\$5.39	\$4.84	\$3.50
	Cost per rider	\$799	\$844	\$982

Very low Low Comparable High Very high

Per-pupil spending by operational area

	District		Peer average	State average	National average
	2011	2012	2012	2012	2010
Total	\$7,196	\$6,887	\$7,033	\$7,475	\$10,652
Classroom dollars	3,826	3,572	3,759	4,053	6,526
Nonclassroom dollars:	3,370	3,315	3,274	3,422	4,126
Administration	720	751	736	736	1,139
Plant operations	1,050	1,012	920	928	1,012
Food service	438	410	338	382	405
Transportation	246	243	426	362	443
Student support	526	528	546	578	592
Instruction support	390	371	308	436	535

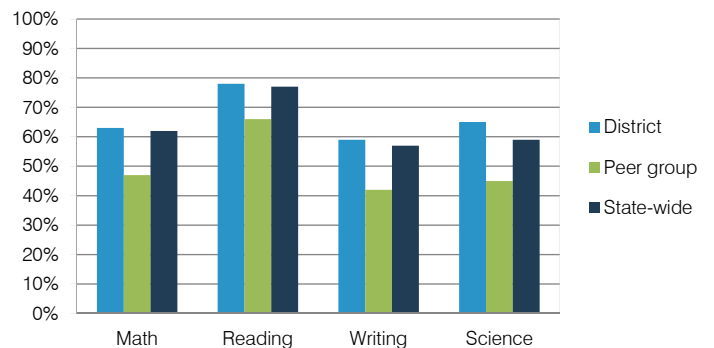
STUDENT ACHIEVEMENT, TEACHER MEASURES, AND FINANCIAL ASSESSMENT

ADE-reported district and school letter grades

District grade: **B**

Grade	Number of schools	Percentage of schools
A	1	11%
B	4	44%
C	3	33%
D	0	0%
F	0	0%
Not rated	1	11%

Percentage of students who met state standards (AIMS)



Student and teacher measures

Measure	District	Peer average	State average
Attendance rate	95%	93%	94%
Graduation rate (2011)	89%	76%	78%
Poverty rate (2011)	36%	40%	25%
Students per teacher	17.8	15.6	18.1
Average teacher salary	\$39,526	\$42,644	\$45,193
Amount from Proposition 301	\$2,129	\$3,127	\$3,195
Average years of teacher experience	11.1	13.0	11.0
Percentage of teachers in first 3 years	22%	13%	16%

Financial stress assessment

Overall financial stress level: **Low**

Measure: 2010 through 2012	Assessment
Number of students attending	Steady
Spending exceeded operating/capital budgets	No overspending
Spending increase election results	Voter-approved
Operating reserve percentage (max. 4%), trend	4.0%, Steady
Years of capital reserve held	1 to 3 years
Current financial and internal control status	Compliant

