

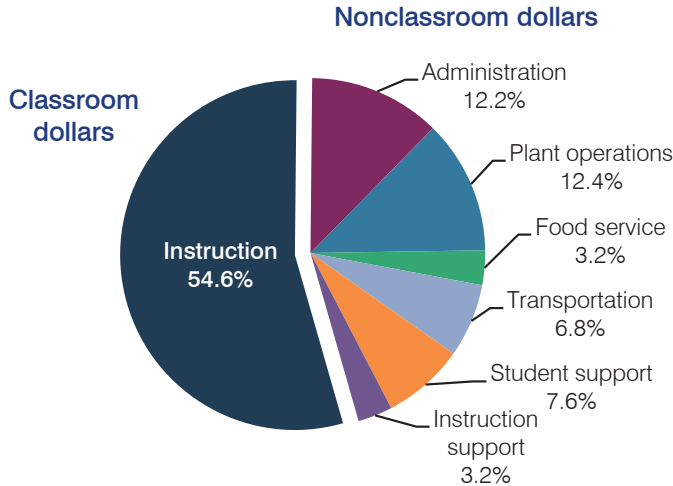
# Fountain Hills Unified School District

Maricopa County  
 Efficiency peer groups 3 and T-4, Achievement peer group 2  
 Legislative district(s): 23

District size, location: Medium, Suburb  
 Students attending: 1,848  
 Number of schools: 3

## OPERATIONAL EFFICIENCY

### Spending by operational area



### 5-year spending trend

Total spending per pupil decreased by 1 percent. Spending in the classroom varied year to year, decreasing overall from 57.1 to 54.6 percent. Spending on transportation increased substantially, while spending on instruction support decreased slightly. Spending on other nonclassroom areas varied year to year.

### Cost measures relative to peer averages

Operational area	Measure	District	Peer average	State average
Administration	Cost per pupil	\$925	\$744	\$746
	Students per administrator	61	68	67
Plant operations	Cost per square foot	\$4.25	\$5.74	\$6.03
	Square footage per student	221	163	153
Food service	Cost per meal equivalent	\$2.86	\$2.84	\$2.58
Transportation	Cost per mile	\$3.49	\$3.41	\$3.55
	Cost per rider	\$799	\$1,047	\$1,015

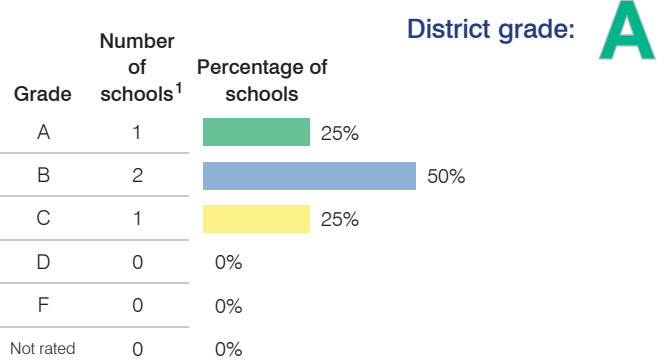
Very low   Low   Comparable   High   Very high

### Per pupil spending by operational area

	District		Peer average	State average	National average
	2012	2013	2013	2013	2011
<b>Total</b>	<b>\$7,551</b>	<b>\$7,596</b>	<b>\$7,062</b>	<b>\$7,496</b>	<b>\$10,658</b>
<b>Classroom dollars</b>	<b>4,101</b>	<b>4,150</b>	<b>3,779</b>	<b>4,031</b>	<b>6,520</b>
<b>Nonclassroom dollars:</b>	<b>3,450</b>	<b>3,446</b>	<b>3,283</b>	<b>3,465</b>	<b>4,138</b>
Administration	941	925	744	746	1,138
Plant operations	895	939	929	924	1,015
Food service	280	240	329	396	412
Transportation	469	519	430	369	452
Student support	583	578	543	582	593
Instruction support	282	245	308	448	528

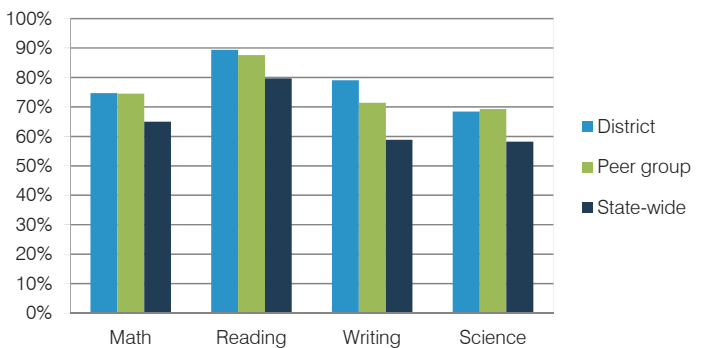
## STUDENT ACHIEVEMENT, TEACHER MEASURES, AND FINANCIAL ASSESSMENT

### ADE-reported district and school letter grades



<sup>1</sup> Includes schools that share a campus and on-line schools.

### Students who met state standards (AIMS)



### Student and teacher measures

Measure	District	Peer average	State average
Attendance rate	95%	95%	94%
Graduation rate (2012)	89%	88%	77%
Poverty rate (2012)	12%	14%	25%
Students per teacher	17.3	18.3	18.3
Average teacher salary	\$40,125	\$44,386	\$45,264
Amount from Proposition 301	\$3,640	\$4,054	\$3,784
Average years of teacher experience	11.5	11.0	10.9
Percentage of teachers in first 3 years	13%	16%	19%

### Financial stress assessment

Overall financial stress level: **Low**

Measure: 2011 through 2013	Assessment
Number of students attending district	Concentrated decrease
Spending exceeded operating/capital budgets	No overspending
Spending increase election results	Voter-approved
Operating reserve percentage (max. 4%), trend	2.9%, Varying
Years of capital reserve held	More than 3 years
Current financial and internal control status	Compliant

Stress level: **Low**   Moderate   High