

Fowler Elementary School District

Maricopa County

Efficiency peer groups 8 and T-1, Achievement peer group 15

Legislative district(s): 19

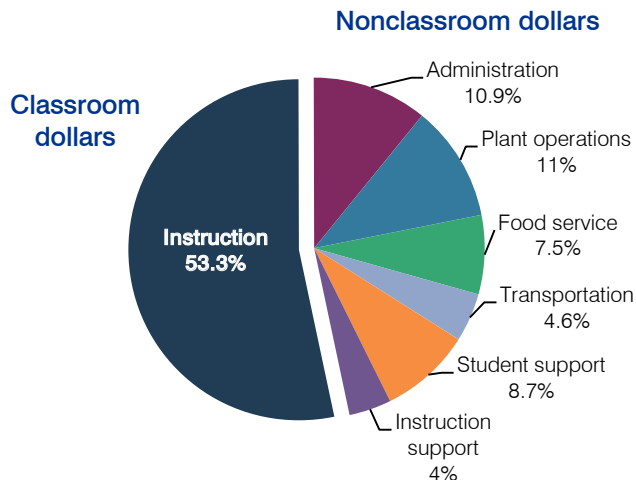
District size / location: Medium-Large, Suburb

Students attending: 4,322

Number of schools: 7

OPERATIONAL EFFICIENCY

Spending by operational area



5-year spending trend

Total spending per pupil decreased by 13 percent. Spending in the classroom decreased from 60.4 to 53.3 percent. Spending on plant operations increased substantially and spending on transportation and instruction support increased. Spending on other nonclassroom areas remained fairly stable.

Cost measures relative to peer averages

Operational area	Measure	District	Peer average	State average
Administration	Cost per pupil	\$685	\$796	\$736
	Students per administrator	79	75	66
Plant operations	Cost per square foot	\$5.34	\$6.25	\$6.09
	Square footage per student	130	131	152
Food service	Cost per meal equivalent	\$2.20	\$2.45	\$2.47
Transportation	Cost per mile	\$4.37	\$5.69	\$3.50
	Cost per rider	\$351	\$569	\$982

Very low Low Comparable High Very high

Per-pupil spending by operational area

	District		Peer average	State average	National average
	2011	2012	2012	2012	2010
Total	\$6,760	\$6,313	\$6,968	\$7,475	\$10,652
Classroom dollars	3,757	3,367	3,582	4,053	6,526
Nonclassroom dollars:	3,003	2,946	3,386	3,422	4,126
Administration	782	685	796	736	1,139
Plant operations	649	694	811	928	1,012
Food service	458	475	523	382	405
Transportation	297	292	271	362	443
Student support	575	549	522	578	592
Instruction support	242	251	463	436	535

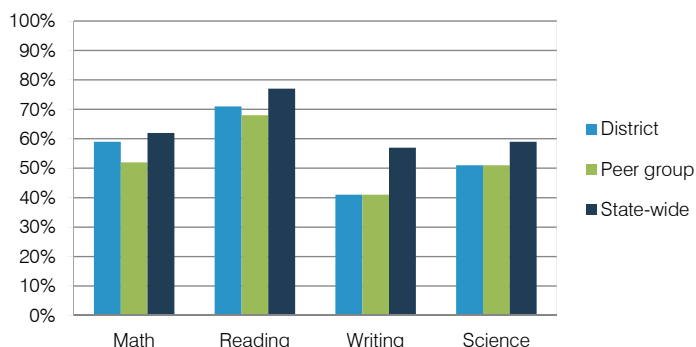
STUDENT ACHIEVEMENT, TEACHER MEASURES, AND FINANCIAL ASSESSMENT

ADE-reported district and school letter grades

District grade: **B**

Grade	Number of schools	Percentage of schools
A	1	14%
B	3	43%
C	3	43%
D	0	0%
F	0	0%
Not rated	0	0%

Percentage of students who met state standards (AIMS)



Student and teacher measures

Measure	District	Peer average	State average
Attendance rate	96%	95%	94%
Graduation rate (2011)	N/A	N/A	N/A
Poverty rate (2011)	35%	33%	25%
Students per teacher	18.7	17.7	18.1
Average teacher salary	\$44,480	\$41,441	\$45,193
Amount from Proposition 301	\$2,072	\$2,520	\$3,195
Average years of teacher experience	9.0	9.6	11.0
Percentage of teachers in first 3 years	21%	21%	16%

Financial stress assessment

Overall financial stress level: **Low**

Measure: 2010 through 2012	Assessment
Number of students attending	Steady
Spending exceeded operating/capital budgets	No overspending
Spending increase election results	Voter-approved
Operating reserve percentage (max. 4%), trend	2.9%, Varying
Years of capital reserve held	1 to 3 years
Current financial and internal control status	Compliant

