

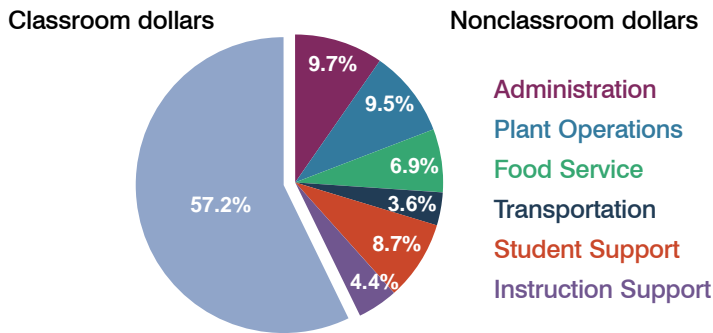
Fowler Elementary School District

Maricopa County
Peer groups: Efficiency 9, Achievement 5
Legislative district(s): 16

District size: Medium-Large
Students attending: 4,266
Number of schools: 7

OPERATIONAL EFFICIENCY

Spending by function



5-year trend

Total spending per pupil increased by 28 percent. Spending in the classroom was very inconsistent year to year, decreasing significantly overall from 60.3 to 57.2 percent. Spending on plant operations increased significantly and spending on administration decreased significantly, while spending in other nonclassroom areas remained fairly stable.

District's cost measures relative to peer group

Operational Area	Measure	District	Peer Average	State Average
Administration	Cost per pupil	\$710	\$872	\$721
	Students per administrator	83	72	66
Plant Operations	Cost per square foot	\$5.36	\$6.86	\$6.25
	Square footage per student	130	127	146
Food Service	Cost per meal equivalent	\$2.27	\$2.32	\$2.41
Transportation	Cost per mile	\$4.78	\$5.66	\$3.35
	Miles per rider	72	129	282

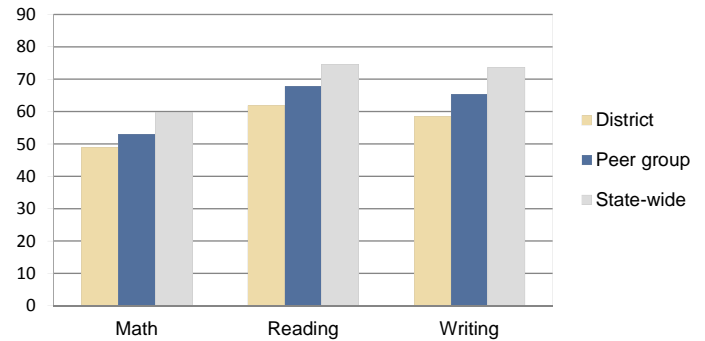
Very low Low Comparable High Very high

Per-pupil spending by function

	District		Peer 2010	State 2010	National 2008
	2009	2010			
Total	\$7,654	\$7,359	\$7,783	\$7,609	\$10,297
Classroom dollars	\$4,387	\$4,213	\$4,157	\$4,253	\$6,262
Nonclassroom dollars:	\$3,267	\$3,146	\$3,626	\$3,356	\$4,035
Administration	780	710	872	721	1,109
Plant Operations	733	698	873	914	1,003
Food Service	567	505	501	366	390
Transportation	269	264	260	342	438
Student Support	628	642	582	581	556
Instruction Support	290	327	538	432	539

STUDENT ACHIEVEMENT AND TEACHER INFORMATION

Percentage of students meeting state standards (AIMS)



Adequate Yearly Progress (AYP) toward federal goals

5 schools met all applicable AYP objectives for NCLB. 2 did not because some students did not demonstrate sufficient academic progress.

Student and teacher information

Measure	District	Peer Average	State Average
Attendance rate	95%	95%	94%
Graduation rate (2009)	N/A	N/A	76%
Poverty rate (2009)	22%	19%	21%
Student/teacher ratio	16.0	18.0	17.9
Average teacher salary	\$43,935	\$43,515	\$47,077
Average years' experience	8.0	7.9	10.6
Percent of teachers in first 3 years	30%	35%	20%

Proposition 301

Teacher and other staff pay

On average, each teacher earned \$5,838 in additional pay, and each librarian and counselor earned between \$3,863 and \$5,969 in additional salary.

Performance pay plan goals and results

Type of goal	Goal met?
Student achievement	■
Dropout/graduation rates	-
Student attendance	-
Parent/student satisfaction	-
Teacher attendance	-
Teacher professional development	-
Teacher evaluations	-
Tutoring	-
Other	■

■ = yes, □ = no, ▴ = partially, and - = no goal set