

# Classroom Dollars and Proposition 301 Results

## Fowler Elementary School District

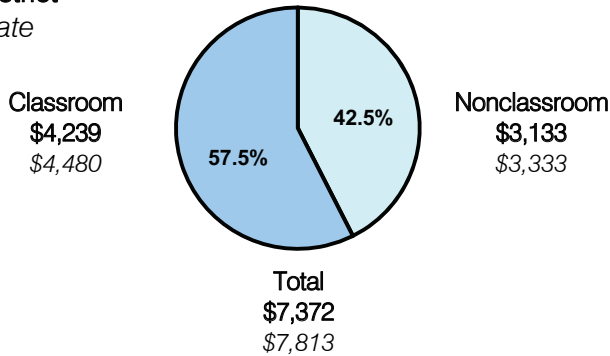
Maricopa County

District size: Medium  
 Students attending: 4,361  
 Number of schools: 7  
 Number of certified teachers: 244

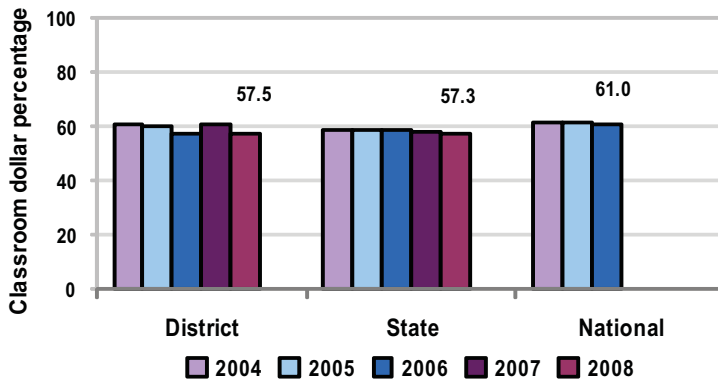
### Classroom Dollars

Fiscal year 2008 averages per pupil

District  
 State



5-year comparison



### Expenditures by function

	Percentage					State 2008	National 2006
	District						
	2004	2005	2006	2007	2008		
Classroom dollars	60.7	60.3	57.5	60.4	57.5	57.3	61.0
Nonclassroom dollars:							
Administration	9.4	11.2	10.7	10.7	10.4	9.2	10.8
Plant operations	9.0	7.2	8.1	8.3	9.2	11.3	9.9
Food service	7.7	6.8	6.9	6.5	7.1	4.8	3.8
Transportation	3.1	3.2	3.5	3.2	3.3	4.4	4.2
Student support	8.3	8.6	9.7	8.6	9.2	7.4	5.2
Instruction support	1.8	2.7	3.6	2.3	3.3	5.4	4.9
Other						0.2	0.2

### Comparative Information

	District			State 2008
	2006	2007	2008	
Student/teacher ratio	17.6	17.1	17.1	17.3
Average teacher salary	\$38,000	\$39,167	\$42,503	\$44,967
Average years' experience	6.6	5.7	6.0	8.1

Classroom dollar ranking: 71 of 230 districts.

### Proposition 301

#### District-reported 2008 results

##### Teacher pay

- On average, each teacher, librarian, and counselor earned an additional \$4,730 in salary.

##### Performance

- The District accomplished its goals, which were similar to the prior fiscal year's goals and were based on school and individual performance.
- Student achievement goals required an increased percentage of students to meet or exceed state standards in reading and math as measured by the AIMS test.
- Teachers completed classroom Web pages, 10 curriculum maps, and a district technology survey.

##### Menu

- Monies were used to increase eligible employee compensation.
- Monies were also used for a variety of AIMS intervention activities, and after-school and intersession tutoring.
- New teachers were compensated for attending a week-long orientation.