

Fredonia-Moccasin Unified School District

Coconino County

Efficiency peer groups 6 and T-11, Achievement peer group 5

Legislative district(s): 5 and 7

District size / location:

Small, Rural

Students attending:

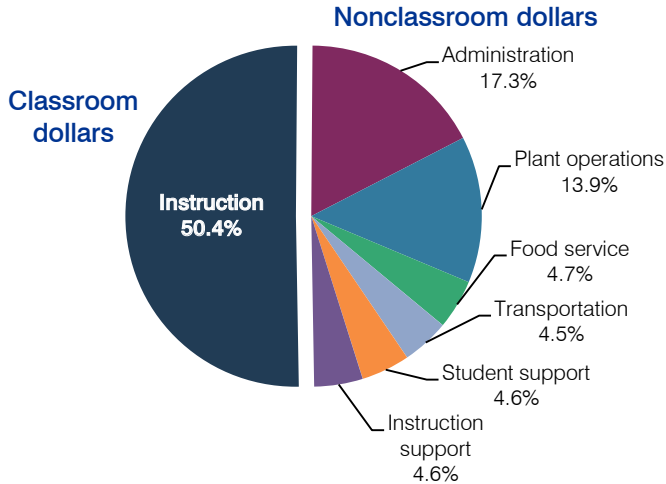
262

Number of schools:

2

OPERATIONAL EFFICIENCY

Spending by operational area



5-year spending trend

Total spending per pupil increased by 27 percent. Spending in the classroom varied year to year, decreasing overall from 53.6 to 50.4 percent. Spending on plant operations increased substantially and spending on student support increased. Spending on other nonclassroom areas varied year to year.

Cost measures relative to peer averages

Operational area	Measure	District	Peer average	State average
Administration	Cost per pupil	\$1,866	\$1,487	\$736
	Students per administrator	37	43	66
Plant operations	Cost per square foot	\$3.84	\$5.04	\$6.09
	Square footage per student	391	299	152
Food service	Cost per meal equivalent	\$2.91	\$3.19	\$2.47
Transportation	Cost per mile	\$3.21	\$2.21	\$3.50
	Cost per rider	\$1,414	\$978	\$982

Very low Low Comparable High Very high

Per-pupil spending by operational area

	District		Peer average	State average	National average
	2011	2012	2012	2012	2010
Total	\$9,595	\$10,779	\$9,872	\$7,475	\$10,652
Classroom dollars	5,049	5,429	4,866	4,053	6,526
Nonclassroom dollars:	4,546	5,350	5,006	3,422	4,126
Administration	1,644	1,866	1,487	736	1,139
Plant operations	1,227	1,499	1,438	928	1,012
Food service	502	503	454	382	405
Transportation	390	491	510	362	443
Student support	474	499	636	578	592
Instruction support	309	492	481	436	535

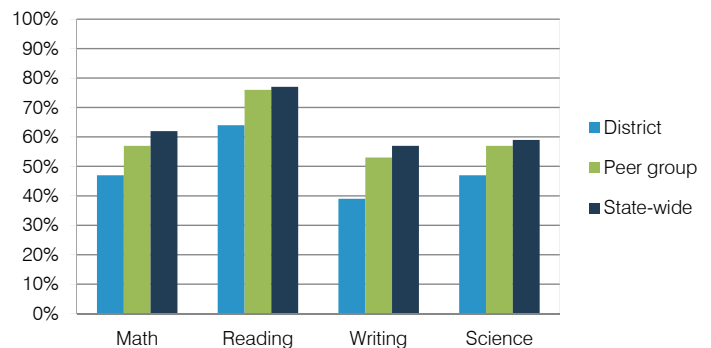
STUDENT ACHIEVEMENT, TEACHER MEASURES, AND FINANCIAL ASSESSMENT

ADE-reported district and school letter grades

District grade: **C**

Grade	Number of schools	Percentage of schools
A	1	50%
B	0	0%
C	0	0%
D	1	50%
F	0	0%
Not rated	0	0%

Percentage of students who met state standards (AIMS)



Student and teacher measures

Measure	District	Peer average	State average
Attendance rate	94%	94%	94%
Graduation rate (2011)	91%	82%	78%
Poverty rate (2011)	26%	24%	25%
Students per teacher	13.2	17.0	18.1
Average teacher salary	\$44,408	\$40,636	\$45,193
Amount from Proposition 301	\$2,573	\$3,192	\$3,195
Average years of teacher experience	10.2	11.8	11.0
Percentage of teachers in first 3 years	20%	15%	16%

Financial stress assessment

Overall financial stress level: **Low**

Measure: 2010 through 2012

Assessment

Number of students attending	Small school adjustment
Spending exceeded operating/capital budgets	No overspending
Spending increase election results	No election held
Operating reserve percentage (max. 4%), trend	Impact Aid Fund reserve
Years of capital reserve held	More than 3 years
Current financial and internal control status	Compliant

Stress level

