

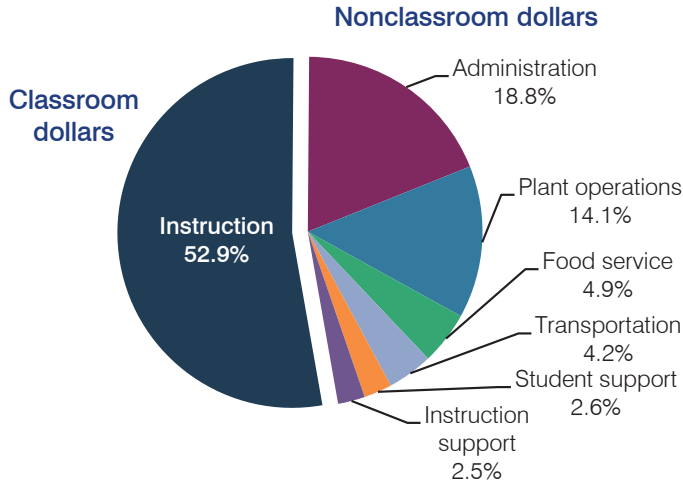
Fredonia-Moccasin Unified School District

Coconino County
 Efficiency peer groups 6 and T-9, Achievement peer group 5
 Legislative district(s): 5 and 7

District size, location: Small, Rural
 Students attending: 241
 Number of schools: 2

OPERATIONAL EFFICIENCY

Spending by operational area



5-year spending trend

Total spending per pupil increased by 7 percent. Spending in the classroom varied year to year, decreasing overall from 59.9 to 52.9 percent. Overall, spending on administration and plant operations increased substantially and spending on transportation increased slightly. Spending on food service decreased slightly, while other nonclassroom areas varied year to year.

Cost measures relative to peer averages

Operational area	Measure	District	Peer average	State average
Administration	Cost per pupil	\$1,954	\$1,571	\$746
	Students per administrator	47	43	67
Plant operations	Cost per square foot	\$3.44	\$4.94	\$6.03
	Square footage per student	425	318	153
Food service	Cost per meal equivalent	\$2.81	\$3.28	\$2.58
Transportation	Cost per mile	\$2.49	\$2.42	\$3.55
	Cost per rider	\$1,449	\$1,013	\$1,015

Very low Low Comparable High Very high

Per pupil spending by operational area

	District		Peer average 2013	State average 2013	National average 2011
	2012	2013			
Total	\$10,779	\$10,387	\$10,188	\$7,496	\$10,658
Classroom dollars	5,429	5,496	4,979	4,031	6,520
Nonclassroom dollars:	5,350	4,891	5,209	3,465	4,138
Administration	1,866	1,954	1,571	746	1,138
Plant operations	1,499	1,461	1,558	924	1,015
Food service	503	510	463	396	412
Transportation	491	433	509	369	452
Student support	499	275	647	582	593
Instruction support	492	258	461	448	528

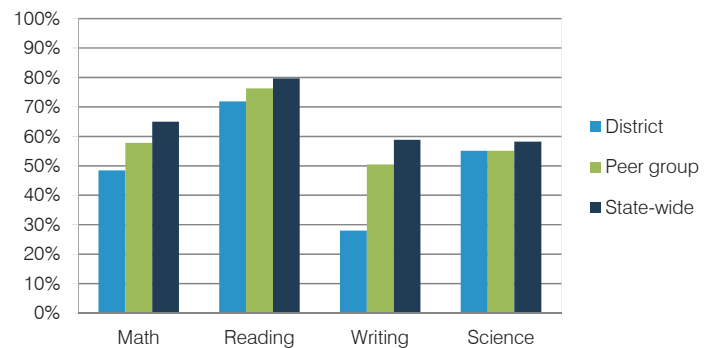
STUDENT ACHIEVEMENT, TEACHER MEASURES, AND FINANCIAL ASSESSMENT

ADE-reported district and school letter grades

District grade: **C**

Grade	Number of schools	Percentage of schools
A	0	0%
B	0	0%
C	1	50%
D	1	50%
F	0	0%
Not rated	0	0%

Students who met state standards (AIMS)



Student and teacher measures

Measure	District	Peer average	State average
Attendance rate	93%	94%	94%
Graduation rate (2012)	95%	83%	77%
Poverty rate (2012)	20%	24%	25%
Students per teacher	14.0	16.6	18.3
Average teacher salary	\$43,713	\$41,866	\$45,264
Amount from Proposition 301	\$2,623	\$4,192	\$3,784
Average years of teacher experience	10.3	11.7	10.9
Percentage of teachers in first 3 years	19%	16%	19%

Financial stress assessment

Overall financial stress level: **Low**

Measure: 2011 through 2013

Assessment

Number of students attending district	Small school adjustment
Spending exceeded operating/capital budgets	No overspending
Spending increase election results	No election held
Operating reserve percentage (max. 4%), trend	3.2%, Varying
Years of capital reserve held	Impact Aid Fund reserve
Current financial and internal control status	Compliant

Stress level

