

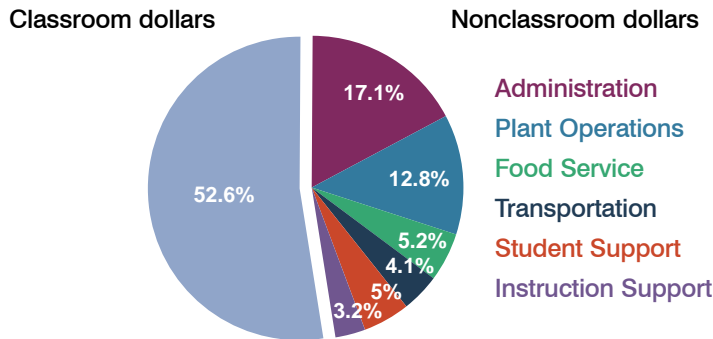
# Fredonia-Moccasin Unified School District

Coconino County  
Peer groups: Efficiency Group 6, Achievement Group 6  
Legislative district(s): 3

District size: Small  
Students attending: 292  
Number of schools: 2

## OPERATIONAL EFFICIENCY

### Spending by operational area

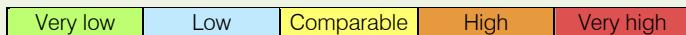


### 5-year trend

Total spending per pupil increased by 6 percent. Spending in the classroom varied year to year, decreasing significantly overall from 59.8 to 52.6 percent. Spending on administration, student support, and instruction support increased significantly, while spending on other nonclassroom areas varied year to year.

### District's cost measures relative to peer group

Operational Area	Measure	District	Peer Average	State Average
Administration	Cost per pupil	\$1,644	\$1,488	\$728
	Students per administrator	42	42	66
Plant Operations	Cost per square foot	\$3.38	\$5.22	\$6.10
	Square footage per student	363	292	152
Food Service	Cost per meal equivalent	\$3.05	\$3.04	\$2.45
Transportation	Cost per mile	\$2.61	\$2.12	\$3.39
	Miles per rider	420	363	283



### Per-pupil spending by operational area

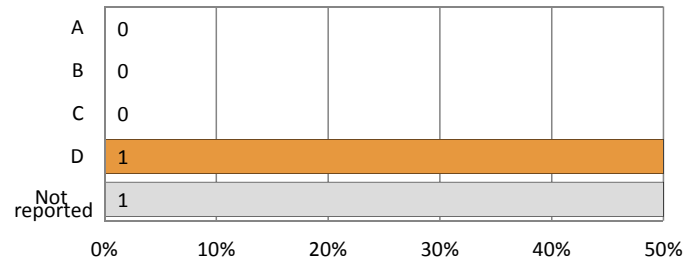
	District		Peer 2011	State 2011	National 2009
	2010	2011			
<b>Total</b>	<b>\$10,277</b>	<b>\$9,595</b>	<b>\$9,916</b>	<b>\$7,485</b>	<b>\$10,591</b>
<b>Classroom dollars</b>	<b>\$5,256</b>	<b>\$5,049</b>	<b>\$4,919</b>	<b>\$4,098</b>	<b>\$6,456</b>
<b>Nonclassroom dollars:</b>	<b>\$5,021</b>	<b>\$4,546</b>	<b>\$4,997</b>	<b>\$3,387</b>	<b>\$4,135</b>
Administration	1,866	1,644	1,488	728	1,147
Plant Operations	1,324	1,227	1,455	927	1,033
Food Service	560	502	449	375	404
Transportation	413	390	472	352	443
Student Support	495	474	611	571	573
Instruction Support	363	309	522	434	535

## STUDENT ACHIEVEMENT AND TEACHER INFORMATION

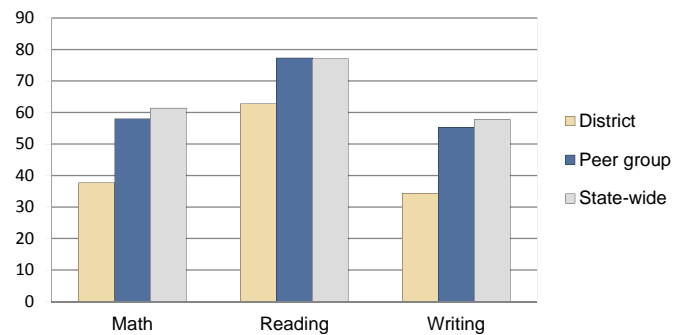
### District and school letter grades

District grade: **D**

### School grades (number and percentage):



### Percentage of students meeting state standards (AIMS)



### Student and teacher information

Measure	District	Peer Average	State Average
Attendance rate	93%	94%	95%
Graduation rate (2010)	91%	82%	78%
Poverty rate (2010)	24%	24%	22%
Students per teacher	13.8	17.3	18.1
Average teacher salary	\$44,568	\$41,429	\$45,637
Average years of experience	10.8	12.6	10.9
Percent of teachers in first 3 years	17%	12%	16%

### Proposition 301 pay, goals, and results

Average additional salary earned by teachers: \$2,966

Type of goal	Goal met?
Student achievement	▲
Dropout/graduation rates	▲
Student attendance	■
Parent/student satisfaction	■
Teacher attendance	-
Teacher professional development	■
Teacher evaluations	-
Tutoring	■
Other	■

■ = yes, □ = no, ▲ = partially, and - = no goal set