

Ft. Thomas Unified School District

Graham County
Operational peer group: F
Legislative districts: 5

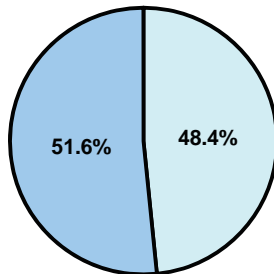
District size: Small
Students attending: 509
Number of schools: 3

OPERATIONAL EFFICIENCY

Average per-pupil spending

District
State

Classroom
\$7,027
\$4,497



Nonclassroom
\$6,593
\$3,411

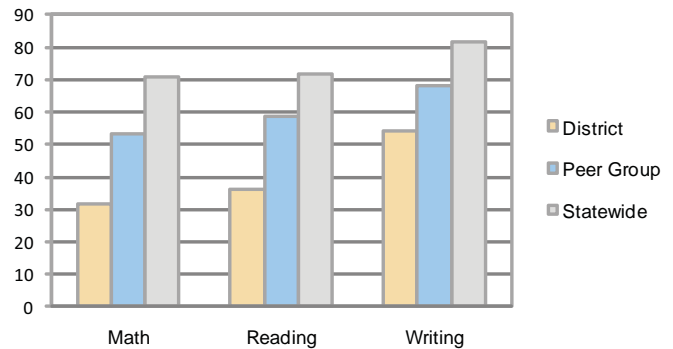
Total
\$13,620
\$7,908

5-year trend

Total spending per pupil increased by 53 percent. Spending in the classroom varied year to year and decreased significantly overall from 55.2 to 51.6 percent. Spending on administration, student support, and instruction support increased, while spending in other nonclassroom areas varied year to year.

STUDENT ACHIEVEMENT AND TEACHER INFORMATION

Percentage of students meeting state standards (AIMS)



Adequate Yearly Progress (AYP) toward federal goals

2 schools met all applicable AYP objectives for NCLB. 1 did not because some students did not demonstrate sufficient academic progress.

Student and teacher information

Measure	District	Peer average	State average
Attendance rate	91%	94%	95%
Graduation rate (2008)	74%	73%	75%
Poverty rate	34%	30%	19%
Student/teacher ratio	16.7	14.2	17.1
Average teacher salary	\$43,707	\$41,521	\$45,209
Average years' experience	12.3	10.8	8.3
Percent of teachers in first 3 years	19%	23%	16%

District's cost measures relative to peer group

Operational Area	Measure	District	Peer Average	State Average
Administration	Cost per pupil	\$2,013	\$1,524	\$729
	Students per administrator	28	42	66
Plant Operations	Cost per square foot	\$3.69	\$5.78	\$6.40
	Square footage per student	350	284	144
Food Service	Cost per meal equivalent	\$4.48	\$3.38	\$2.53
Transportation	Cost per mile	\$2.61	\$2.60	\$3.36
	Miles per rider	286	294	271

Very Low Low Comparable High Very High

Per-pupil spending by function

	District		Peer	State	National
	2008	2009	2009	2009	2007
Total	\$14,513	\$13,620	\$10,596	\$7,908	\$9,683
Classroom dollars	\$7,929	\$7,027	\$5,393	\$4,497	\$5,903
Nonclassroom dollars:	\$6,584	\$6,593	\$5,203	\$3,411	\$3,780
Administration	2,109	2,013	1,524	729	1,050
Plant Operations	1,556	1,294	1,549	920	951
Food Service	840	895	496	382	369
Transportation	814	739	552	343	406
Student Support	442	587	593	594	512
Instruction Support	823	1,065	481	431	470
Other	0	0	8	12	22

Proposition 301

Teacher pay

On average, each teacher earned an additional \$6,705 in salary, and each instructional aide, librarian, and counselor earned between \$439 and \$6,907 in additional salary.

Performance pay plan goals and results

Type of goal	Goal met?
Student achievement	■
Dropout/ graduation rates	
Student attendance	
Parent/student satisfaction	
Teacher attendance	
Teacher professional development	■
Teacher evaluations	
Tutoring	■
Other	

■ = yes, □ = no, and ▴ = partially