

# Classroom Dollars and Proposition 301 Results

## Gadsden Elementary School District

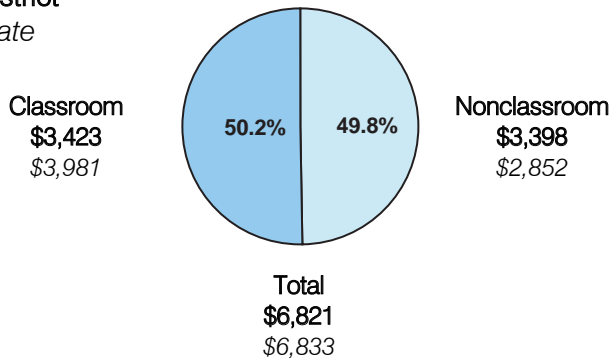
Yuma County

District size: Medium  
 Students attending: 4,661  
 Number of schools: 8  
 Number of certified teachers: 208

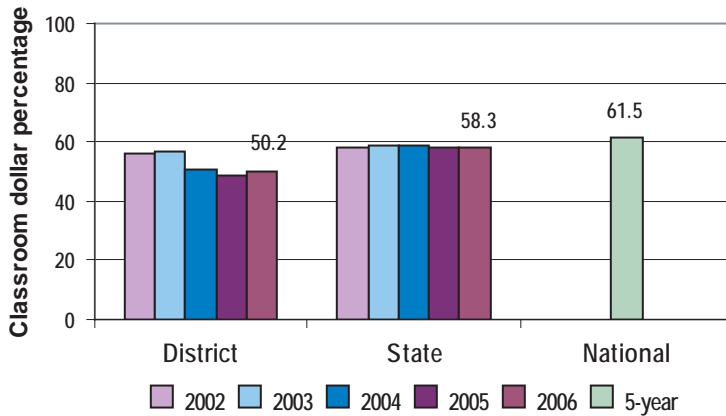
### Classroom Dollars

Fiscal year 2006 averages per pupil

District  
 State



### 5-year comparison



### Expenditures by function

	District					State 2006	National 5-year
	2002	2003	2004	2005	2006		
Classroom dollars	55.8	56.6	50.6	48.6	50.2	58.3	61.5
Nonclassroom dollars:							
Administration	12.5	13.5	11.7	11.9	12.2	9.4	11.0
Plant operations	8.8	9.1	11.7	11.1	10.5	11.2	9.6
Food service	8.9	7.3	8.1	8.6	8.3	4.7	3.9
Transportation	3.9	3.7	3.5	3.0	3.0	4.2	4.0
Student support	3.8	5.1	5.4	6.1	6.4	7.2	5.1
Instruction support	6.3	4.7	9.0	10.7	9.4	4.8	4.7
Other						0.2	0.2

### Comparative Information

	District			State 2006
	2004	2005	2006	
Student/teacher ratio	24.7	21.9	22.4	17.7
Average teacher salary	\$41,247	\$42,785	\$41,709	\$42,967
Average years' experience	6.9	7.1	7.5	8.3

Classroom dollar ranking: 178 of 229 districts.

### Proposition 301

#### District-reported 2006 results

##### Teacher pay

- On average, each teacher, librarian, speech pathologist, audiologist, counselor, intervention specialist, resource specialist, and professional development coordinator earned between \$3,061 and \$4,400 in additional salary, and each instructional aide earned \$3,150.

##### Performance

- The District accomplished its goals, which were based on district, school, and individual performance.
- Standardized test scores were used to measure improvement in student achievement.
- Teachers attended professional development activities, received satisfactory performance evaluations, improved their attendance rates, and participated in leadership activities and tutoring.
- Student attendance rates averaged at least 93 percent.
- Parent involvement increased.

##### Menu

- Monies continued to be used for professional development and community service activities. Professional development was geared toward improving student achievement.